

## INDUCTORS / CHOKES / COILS



Share's standard shielded or unshielded Inductor offering consists of over 14 different product families in molded, encapsulated, vacuum impregnated or open construction with radial, axial or surface mount foot prints. Our extensive inductance values as low as 0.10  $\mu\text{H}$  to 180 mH, and high saturation currents from 0.084 Amps up to 980 Amps gives our customers a wide variety to choose from.

standard shielded or unshielded Choke offering consists of over 15 different product families in molded, encapsulated, vacuum impregnated or open construction with radial, axial or surface mount foot prints. Our extensive inductance values as low as 0.22  $\mu\text{H}$  to 100 mH, and high saturation currents from 0.039 Amps up to 233 Amps gives our customers a wide variety to choose from.

High Q and Self Resonant frequency can be achieved for your specific application. All of our Coils and Transformers are designed to meet UL Class B 130 Celsius or better and are lead free RoHS compliant.



### APPLICATIONS:

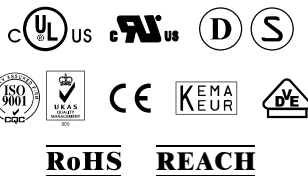
Video equipment such as TV's and VCR's, office automation equipment, audio equipment, communication equipment, measuring instruments, motors and other equipment.

### FEATURES:

- Compactness and low price.
- Excellent frequency characteristics.
- Heat dispersion making them suitable for applications with larger current
- Higher attenuations characteristics.
- High dielectric withstand satisfies safety standards.
- UL Approved insulation material used.
- High inductance & Impedance.
- Low Leakage.
- Higher dielectric resistances

### GENERAL CHARACTERISTIC:

- Inductance Range:
  - 1mH to 50mH or above (Common Mode)
  - 10 $\mu\text{H}$  to 1mH or above (Differential Mode)
- Rated Voltage: AC 100-250V 50/60Hz
- Rated Current: AC 0.1A rms to 30A rms+
- Dielectric Strength: AC/DC 500V to 4000V



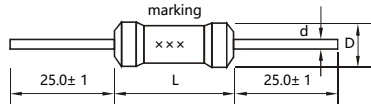
#### Additional information:

We reserve the right to make technical changes or modify the contents of this document without prior notice. SHARE Ltd. Does not accept any responsibility what so ever for potential errors or possible lack of information in this document.

We can offer that even custom-made transformers will be covered by approvals from UL, CSA, KEMA, etc., but we will be happy to assist you in implementing them.

New approvals may be required.

# SH-CHA SERIES 1425,1122,0617,0410 THROUGH-HOLE AXIAL UL TUBE POWER CHOKES



Additional information:  
We reserve the right to make technical changes or modify the contents of this document without prior notice.  
SHARE Ltd. Does not accept any responsibility what so ever for potential errors or possible lack of information in this document.  
We can offer that even custom-made transformers will be covered by approvals from UL, CSA, KEMA, etc., but we will be happy to assist you in implementing them. New approvals may be required.

### FEATURES:

- Wire-wound Construction
- Polyolefin Shrink Tubing
- Excellent Environmental Characteristics
- High Reliability
- High Inductance and Lower RDC
- Bulk Packaging is Standard(Qty: 500 pcs.)
- Tolerance: 10% is Standard,
- Tighter Tolerances Available

### Applications:

- Power Supplies
- SCR and TRIAC Controls
- RFI Suppression
- Filters
- Switching Regulators

### TECHNICAL INFORMATION:

- Testing:LCR Bridge measured @ 1KHz 0.1V HP 4284A (Equivalent acceptable)
- RDC: QuadTech 1880 Milliohmmeter
- IDC Max: Lowers inductance by 10%
- Operating temperature: -55°C to +125°C
- Shrink tube: Flame retardant UL type VW-1
- Marking: Inductance and tolerance

Note:All specifications subject to change without notice.

Part Number	L	D(φ)	D(φ)
SH-CHA0410	10.8	4	0.6±0.05
SH-CHA0617	17.8	6.6	0.8±0.05
SH-CHA1122	22	11	0.8±0.05
SH-CHA1425	25	14	0.8±0.05

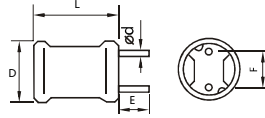
dimension(mm)

### STANDARD SPECIFICATIONS:

Part Number SH-CHA-xx-	L (μH)	1425			1122			0617			0410		
		DCR Max. Ω @+20°C	I Sat A(max)	Idc A(max)	DCR Max. Ω @+20°C	I Sat A(max)	Idc A(max)	DCR Max. Ω @+20°C	I Sat A(max)	Idc A(max)	DCR Max. Ω @+20°C	I Sat mA(max)	Idc mA(max)
3R9K	3.9	.007	47.0	6.0	.007	15.5	4.0	.019	7.3	1.70	.060	1800	1500
4R7K	4.7	.008	42.0	6.0	.008	13.9	4.0	.022	6.3	1.50	.068	1700	1400
5R6K	5.6	.009	35.0	6.0	.011	12.6	4.0	.024	5.6	1.40	.074	1600	1300
6R8K	6.8	.010	29.0	6.0	.011	11.6	4.0	.026	5.3	1.35	.080	1600	1200
8R2K	8.2	.011	24.0	6.0	.013	9.89	4.0	.028	4.5	1.30	.087	1500	1100
100K	10	.012	19.0	6.0	.017	8.70	4.0	.033	4.1	1.30	.095	1500	970
120K	12	.013	16.0	6.0	.019	8.21	4.0	.037	3.6	1.30	.110	1400	880
150K	15	.014	14.8	6.0	.022	7.34	4.0	.040	3.3	1.28	.115	1200	790
180K	18	.015	13.4	6.0	.023	6.64	4.0	.044	3.0	1.28	.160	1100	710
220K	22	.016	12.4	6.0	.026	6.07	4.0	.050	2.7	1.00	.190	1000	640
270K	27	.017	11.2	6.0	.027	5.36	4.0	.058	2.5	1.00	.220	950	580
330K	33	.021	10.2	6.0	.032	4.82	4.0	.075	2.2	1.00	.350	910	530
390K	39	.023	9.3	6.0	.033	4.36	4.0	.094	2.0	1.00	.260	880	480
470K	47	.025	8.7	6.0	.035	3.98	4.0	.109	1.8	1.00	.350	760	430
560K	56	.028	8.0	6.0	.037	3.66	3.2	.140	1.7	.840	.470	650	400
680K	68	.039	7.0	4.7	.047	3.31	2.5	.145	1.5	.610	.530	610	370
820K	82	.043	6.3	4.7	.060	3.10	2.0	.152	1.4	.520	.600	580	330
101K	100	.055	5.7	3.8	.090	2.79	1.6	.208	1.2	.520	.670	550	300
121K	120	.076	5.3	3.0	.113	5.54	1.6	.283	1.1	.420	.900	470	270
151K	150	.084	4.7	3.0	.129	2.22	1.6	.340	1.0	.420	1.20	410	250
181K	180	.096	4.3	3.0	.150	1.98	1.6	.362	.95	.420	1.40	380	220
221K	220	.108	4.0	3.0	.162	1.89	1.6	.430	.86	.420	1.90	320	200
271K	270	.151	3.6	2.3	.208	1.63	1.6	.557	.77	.330	2.10	310	180
331K	330	.168	3.2	2.3	.212	1.51	1.6	.665	.70	.330	2.40	290	170
391K	390	.182	2.9	2.3	.281	1.39	1.6	.772	.64	.330	3.0	260	150
471K	470	.202	2.6	2.3	.380	1.24	1.2	1.15	.59	.315	3.40	240	140
561K	560	.348	2.4	1.4	.420	1.17	1.0	1.27	.54	.315	4.70	210	130
681K	680	.470	2.2	1.2	.548	1.05	1.0	1.61	.49	.250	6.40	180	110
821K	820	.500	2.0	1.2	.655	.97	0.8	1.96	.44	.200	7.1	170	100
102K	1000	.570	1.8	1.2	.844	.87	0.8	2.30	.40	.200	7.9	160	95
122K	1200	.648	1.70	1.200	1.04	.79	0.6	2.65	.35	.200	9.0	150	87
152K	1500	.888	1.55	0.900	1.18	.70	0.6	3.45	.33	.158	12.0	130	78
182K	1800	1.16	1.40	0.750	1.56	.64	0.6	4.03	.29	.158	14.0	120	71
222K	2200	1.20	1.25	0.750	2.00	.58	0.5	4.48	.27	.158	19.0	100	64
272K	2700	1.44	1.10	0.750	2.06	.53	0.4	5.90	.24	.125	25.0	90	58
332K	3300	1.92	1.000	0.590	2.53	.47	0.4	6.56	.220	.125	29.0	83	52
392K	3900	2.16	0.900	0.590	2.75	.43	0.4	8.63	.200	.100	34.0	77	48
472K	4700	2.50	0.850	0.590	3.19	.39	0.4	10.50	.180	.100	37.0	74	44
562K	5600	3.20	0.780	0.450	3.92	.359	0.315	13.90	.166	.082	50.0	63	40
682K	6800	4.00	0.700	0.450	5.69	.322	0.250	16.30	.151	.082	58.0	59	36
822K	8200	5.20	0.650	0.350	6.32	.293	0.250	20.80	.136	.065	68.0	54	33
103K	10000	6.00	0.600	0.350	7.30	.266	0.250	26.40	.125	.050	75.0	52	30
123K	12000	8.00	0.540	0.270	9.21	.241	0.200	29.90	.114	.050			
153K	15000	10.00	0.480	0.200	10.50	.214	0.200	42.50	.098	.039			
183K	18000	11.00	0.460	0.200	14.80	.198	0.158	48.30	.091	.039			
223K	22000	13.00	0.390	0.200	21.8	.180	0.125						
273K	27000	15.00	0.355	0.200	22.7	.162	0.125						
333K	33000	21.00	0.330	0.160	25.7	.146	0.125						
393K	39000	23.20	0.300	0.160	31.8	.135	0.100						
473K	47000	32.00	0.270	0.120	36.1	.122	0.100						
563K	56000	35.00	0.175	0.120	40.9	.112	0.100						
683K	68000	48.00	0.145	0.095	57.3	.101	0.082						
823K	82000	54.30	0.120	0.095	79.3	.090	0.065						
104K	100000	68.50	0.100	0.070	89.7	.081	0.065						
124K	120000	75.00	0.080	0.070									
154K	150000	84.30	0.060	0.070									

Note:1. K=±10%,M=±20%

# SH-CHB SERIES 0304,0406,0608,0806,0810,0912,1012,1016,1215,1415,1419,1618 THROUGH-HOLE RADIAL UL TUBE POWER CHOKES



## TECHNICAL INFORMATION:

- Testing: LCR Bridge measured @ 1KHz 0.1V HP 4284A (Equivalent acceptable)
- RDC: QuadTech 1880 Milliohm meter
- IDC Max: Lowers inductance by 10%
- Operating temperature: -55°C to +125°C
- Shrink tube: Flame retardant UL type VW-1
- Marking: Inductance and tolerance

Note: All specifications subject to change without notice.

Part Number	D	L	E	F	φd
SH-CHB0406	5.7	7.3	5/15	2	0.5
SH-CHB0608	7.2	9.5	5/15	3	0.6
SH-CHB0806	8.8	8.0	5/15	5	0.6
SH-CHB0810	8.8	12.0	5/15	5	0.6
SH-CHB0912	10.0	14	5/15	5	0.6
SH-CHB1012	11.0	14	5/15	5	0.8
SH-CHB1016	11.0	18	5/15	5.0	0.8
SH-CHB1415	15.5	18	5/15	7.5	1.0

dimension(mm)

## FEATURES:

- Wire-wound Construction
- Polyolefin Shrink Tubing
- Excellent heat resistance
- Excellent environmental characteristics
- High reliability

- Packaging: Bulk is standard
- Tolerance: 10% is standard, tighter tolerances available

## Applications:

- Power Supplies
- SCR and TRIAC Controls
- RFI Suppression
- Filters
- Switching Regulators



## Additional information:

We reserve the right to make technical changes or modify the contents of this document without prior notice.

SHARE Ltd. Does not accept any responsibility what so ever for potential errors or possible lack of information in this document.

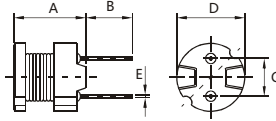
We can offer that even custom-made transformers will be covered by approvals from UL, CSA, KEMA, etc., but we will be happy to assist you in implementing them. New approvals may be required.

## STANDARD SPECIFICATIONS:

Part No. SH-CHB-XXXX-	Inductance (μH)	IDC(A)								DCR(Ω)Max.							
		0406	0608	0806	0810	0912	1012	1016	1415	0406	0608	0806	0810	0912	1012	1016	1415
100K	10	0.620	1.3		2.6	4.5	5.3	5.0	5.0	0.060	0.041		0.04	0.027	0.022	0.031	0.015
120K	12	0.620	1.3		2.6	4.1	4.9	5.0	5.0	0.072	0.046		0.04	0.031	0.023	0.036	0.016
150K	15	0.620	1.3		2.1	3.7	4.4	5.0	5.0	0.078	0.050		0.05	0.036	0.026	0.040	0.017
180K	18	0.490	1.0		2.0	3.4	4.0	5.0	5.0	0.108	0.062		0.05	0.049	0.033	0.041	0.019
220K	22	0.385	1.0	1.27	1.7	3.1	3.6	5.0	5.0	0.144	0.071	0.11	0.06	0.055	0.037	0.043	0.021
270K	27	0.300	1.0	1.14	1.6	2.8	3.3	5.0	5.0	0.168	0.073	0.14	0.06	0.062	0.048	0.046	0.023
330K	33	0.300	0.8	1.03	1.4	2.5	2.9	3.6	4.0	0.200	0.090	0.17	0.07	0.079	0.055	0.051	0.027
390K	39	0.300	0.8	0.95	1.4	2.3	2.7	3.6	4.0	0.220	0.102	0.19	0.08	0.087	0.073	0.054	0.029
470K	47	0.300	0.8	0.87	1.3	2.1	2.5	3.6	4.0	0.240	0.120	0.23	0.10	0.099	0.083	0.063	0.031
560K	56	0.300	0.62	0.80	1.2	1.9	2.3	3.0	4.0	0.265	0.162	0.26	0.11	0.13	0.092	0.075	0.035
680K	68	0.250	0.62	0.72	1.1	1.7	2.1	3.0	4.0	0.380	0.186	0.28	0.14	0.14	0.12	0.078	0.041
820K	82	0.250	0.49	0.66	1.0	1.6	1.9	2.6	4.0	0.445	0.240	0.39	0.16	0.16	0.14	0.088	0.052
101K	100	0.190	0.49	0.59	0.90	1.4	1.7	2.0	4.0	0.590	0.270	0.43	0.19	0.21	0.16	0.108	0.056
121K	120	0.190	0.49	0.54	0.82	1.3	1.5	2.0	3.3	0.640	0.310	0.54	0.22	0.24	0.20	0.127	0.060
151K	150	0.190	0.49	0.48	0.74	1.2	1.4	1.6	3.3	0.730	0.372	0.64	0.27	0.32	0.23	0.162	0.078
181K	180	0.190	0.385	0.44	0.71	1.1	1.3	1.3	3.3	0.850	0.456	0.74	0.31	0.35	0.31	0.128	0.096
221K	220	0.150	0.385	0.40	0.64	0.96	1.1	1.3	2.6	1.20	0.535	0.96	0.38	0.45	0.34	0.252	0.147
271K	270	0.150	0.385	0.36	0.57	0.87	1.0	1.3	2.6	1.32	0.625	1.12	0.53	0.61	0.40	0.290	0.175
331K	330	0.120	0.300	0.33	0.51	0.79	0.93	1.0	2.0	1.75	0.816	1.48	0.61	0.69	0.52	0.394	0.192
391K	390	0.120	0.250	0.30	0.48	0.72	0.86	1.0	2.0	1.95	1.0	1.66	0.69	0.78	0.65	0.416	0.210
471K	470	0.120	0.250	0.27	0.43	0.66	0.78	0.8	2.0	2.00	1.2	1.91	0.89	1.0	0.71	0.568	0.240
561K	560	0.095	0.250	0.25	0.40	0.60	0.71	0.8	1.60	2.90	1.3	2.31	1.01	1.2	1.0	0.650	0.315
681K	680	0.095	0.190	0.23	0.35	0.55	0.65	0.8	1.60	3.10	1.8	2.67	1.81	1.4	1.0	0.740	0.360
821K	820	0.076	0.190	0.21	0.32	0.50	0.59	0.62	1.30	4.30	2.1	3.10	1.57	1.8	1.3	1.00	0.460
102K	1000	0.060	0.150	0.19	0.30	0.45	0.53	0.55	1.30	5.50	3.0	4.45	1.84	2.1	1.7	1.20	0.540
122K	1200	0.060	0.150		0.27			0.49	1.30	6.30	3.3		2.10			1.50	0.660
152K	1500	0.060	0.150		0.23			0.49	1.0	7.20	3.5		2.80			1.70	0.780
182K	1800	0.046	0.120		0.21			0.385	1.0	9.60	5.7		3.21			1.80	0.990
222K	2200	0.046	0.095		0.19			0.385	0.80	11.5	6.2		4.21			2.40	1.20
272K	2700	0.046	0.095		0.17			0.385	0.80	13.0	7.6		4.94			2.80	1.32
332K	3300	0.036	0.095		0.15			0.300	0.62	17.0	8.5		6.16			3.70	1.80
392K	3900	0.036	0.076		0.14			0.250	0.62	19.0	10.3		6.84			5.00	2.10
472K	4700	0.030	0.076		0.13			0.250	0.49	24.0	11.3		7.89			5.60	2.70
562K	5600	0.030	0.076		0.12			0.250	0.49	29.0	13.0		11.5			6.30	3.15
682K	6800	0.024	0.060		0.11			0.190	0.49	42.0	17.0		13.2			8.40	3.60
822K	8200	0.018	0.060		0.10			0.190	0.385	48.0	20.0		15.2			9.60	4.30
103K	10000	0.018	0.046		0.089			0.190	0.385	55.0	27.0		22.0			10.50	5.15
123K	12000	0.018	0.046		0.073			0.150	0.385	64.0	31.0		25.0			14.05	2.85
153K	15000	0.015	0.036		0.068			0.120	0.30	82.0	45.0		29.0			20.5	8.30
183K	18000	0.015	0.036		0.066			0.095	0.25	96.0	51.0		38.1			27.5	10.20
223K	22000	0.015	0.030		0.059			0.095	0.25	110.0	60.0		44.9			31.0	11.70
273K	27000		0.030		0.052			0.095	0.25		66.0		55.7			35.5	13.00
333K	33000		0.030		0.048			0.095	0.19		100.0		64.2			40.0	18.40
393K	39000				0.042			0.095	0.19				74.2			51.0	21.00
473K	47000				0.038			0.095	0.15				96.4			56.0	27.00

Note: 1. K=±10%, M=±20%

# SH-CH SERIES 0605,0606,0805,0807,0809 THROUGH-HOLE RADIAL POWER CHOKES



## TECHNICAL INFORMATION:

- IDC Max: Determined when superimposed
- Testing: (Equivalent acceptable)
- Inductance: HP4284A 1kHz 0.1V
- RDC: QuadTech 1880 Milliohm meter
- IDC Max: Lowers inductance by 10%
- Operating temperature: -40°C to +105°C
- Storage Temperature: -40°C to +105°C
- Solder methods: Vapor Phase, Infrared Reflow
- Resistance to soldering heat: 260°C for 10 seconds
- Solvent resistance: Conforms to MIL-STD-202E
- Marking: Inductance & Tolerance

Note: All specifications subject to change without notice.

Part Number	A	B	C	D	E
SH-CH0605	5.2Max	4.0	4.0	6.5Max	0.5
SH-CH0606	6.5Max	4.0	4.0	6.5Max	0.5
SH-CH0805	5.5Max	5.0	5.0	8.3Max	0.7
SH-CH0807	7.5Max	5.0	5.0	8.3Max	0.7
SH-CH0809	9.5Max	5.0	5.0	8.3Max	0.7

dimension(mm)

## FEATURES:

- Wire-wound Construction
  - Polyolefin Shrink Tubing
  - Excellent heat resistance
  - Excellent environmental characteristics
  - High reliability
  - Packaging: Bulk is standard
  - Tolerance: 10% is standard, tighter tolerances available
- ### Applications:
- Power Supplies
  - SCR and TRIAC Controls
  - RFI Suppression
  - Filters
  - Switching Regulators



### Additional information:

We reserve the right to make technical changes or modify the contents of this document without prior notice.

SHARE Ltd. Does not accept any responsibility what so ever for potential errors or possible lack of information in this document.

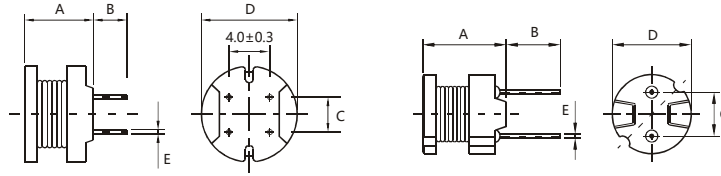
We can offer that even custom-made transformers will be covered by approvals from UL, CSA, KEMA, etc., but we will be happy to assist you in implementing them. New approvals may be required.

## STANDARD SPECIFICATIONS:

Part number SH-CH- XXXX -	Inductance (µH)	DC R(Ω)Max.					IDC(A)				
		0605	0606	0805	0807	0809	0605	0606	0805	0807	0809
100M	10			0.07	0.05	0.04			2.50	2.90	2.60
120M	12			0.08	0.06	0.04			2.40	2.50	2.60
150M	15			0.09	0.07	0.05			2.10	2.20	2.10
180M	18			0.10	0.08	0.05			2.00	1.90	2.00
220M	22	0.18	0.11	0.12	0.09	0.06	0.90	1.27	1.70	1.80	1.70
270M	27	0.21	0.14	0.14	0.11	0.06	0.81	1.14	1.60	1.70	1.60
330M	33	0.27	0.17	0.17	0.13	0.07	0.74	1.03	1.40	1.50	1.40
390M	39	0.29	0.19	0.21	0.14	0.08	0.68	0.95	1.30	1.30	1.40
470M	47	0.34	0.23	0.24	0.15	0.10	0.62	0.87	1.20	1.30	1.30
560M	56	0.42	0.26	0.31	0.18	0.11	0.57	0.80	1.10	1.20	1.20
680M	68	0.48	0.28	0.34	0.20	0.14	0.51	0.72	1.00	1.10	1.10
820M	82	0.55	0.39	0.40	0.24	0.16	0.47	0.66	0.93	1.00	1.00
101K	100	0.68	0.43	0.52	0.28	0.19	0.42	0.59	0.81	0.89	0.90
121K	120	0.77	0.54	0.59	0.36	0.22	0.39	0.54	0.76	0.81	0.82
151K	150	0.95	0.64	0.71	0.42	0.27	0.35	0.48	0.67	0.72	0.74
181K	180	1.15	0.74	0.89	0.57	0.31	0.32	0.44	0.62	0.66	0.71
221K	220	1.30	0.96	1.04	0.63	0.38	0.29	0.40	0.54	0.57	0.64
271K	270	1.55	1.12	1.28	0.88	0.53	0.26	0.36	0.49	0.51	0.57
331K	330	2.18	1.48	1.47	1.05	0.61	0.23	0.33	0.44	0.46	0.51
391K	390	2.47	1.66	1.67	1.17	0.69	0.21	0.30	0.41	0.44	0.48
471K	470	2.92	1.91	1.95	1.34	0.89	0.20	0.28	0.38	0.41	0.43
561K	560	3.97	2.31	2.83	1.72	1.01	0.18	0.25	0.35	0.36	0.40
681K	680	4.57	2.67	3.25	1.96	1.18	0.16	0.23	0.32	0.33	0.35
821K	820	5.28	3.10	3.82	2.56	1.57	0.15	0.21	0.31	0.30	0.32
102K	1000	7.06	4.45	5.28	2.94	1.84	0.13	0.19	0.25	0.27	0.30
122K	1200			6.03	4.04	2.10			0.23	0.24	0.27
152K	1500			7.15	4.70	2.80			0.21	0.22	0.23
182K	1800			8.26	5.05	3.21			0.20	0.20	0.21
222K	2200			11.1	6.25	4.21			0.18	0.18	0.19
272K	2700			13.1	8.72	4.94			0.16	0.16	0.17
332K	3300			15.9	10.6	6.16			0.14	0.15	0.15
392K	3900			18.0	14.2	6.84			0.13	0.14	0.14
472K	4700			23.9	16.7	7.89			0.12	0.12	0.13
562K	5600			26.8	18.7	11.5			0.11	0.11	0.12
682K	6800			31.7	21.8	13.2			0.098	0.10	0.11
822K	8200			46.5	28.7	15.2			0.088	0.093	0.10
103K	10000			55.7	33.0	22.0			0.081	0.084	0.089
123K	12000					25.0					0.073
153K	15000					29.1					0.068
183K	18000					38.9					0.066
223K	22000					44.9					0.059
273K	27000					55.7					0.052
333K	33000					64.2					0.048
393K	39000					74.2					0.042
473K	47000					96.4					0.038

Note: 1. K=±10%, M=±20%

# SH-CH4W SERIES 1006,1008,1010,1014 THROUGH-HOLE RADIAL POWER CHOKES



#### Additional information:

We reserve the right to make technical changes or modify the contents of this document without prior notice.

SHARE Ltd. Does not accept any responsibility what so ever for potential errors or possible lack of information in this document.

We can offer that even custom-made transformers will be covered by approvals from UL, CSA, KEMA, etc., but we will be happy to assist you in implementing them. New approvals may be required.

#### FEATURES:

- Wire-wound Construction
- Polyolefin Shrink Tubing
- Excellent heat resistance
- Excellent environmental characteristics
- High reliability

- Packaging: Bulk is standard
- Tolerance: 10% is standard, tighter tolerances available

#### Applications:

- Power Supplies
- SCR and TRIAC Controls
- RFI Suppression
- Filters
- Switching Regulators

#### TECHNICAL INFORMATION:

- Testing: LCR Bridge measured @ 1KHz
- (Equivalent acceptable)
- RDC: QuadTech 1880 Milliohm meter
- IDC Max: Lowers inductance by 10%
- Operating temperature: -55°C to +125°C
- Marking: Inductance and tolerance

Note: All specifications subject to change without notice.

Part Number	A	B	C	D	E
SH-CH4W1006	6.5Max	3.5±1.0	5.0±0.3	10.5Max	0.7
SH-CH4W1008	8.5Max	3.5±1.0	5.0±0.3	10.5Max	0.7
SH-CH4W1010	10.5Max	3.5±1.0	5.0±0.3	10.5Max	0.7
SH-CH1014	14.4Max	5.0±1.0	5.0±0.3	10.5Max	0.7
SH-CH4W1014	14.4Max	5.0±1.0	5.0±0.3	10.5Max	0.7

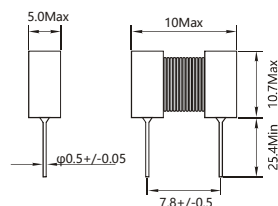
dimension(mm)

#### STANDARD SPECIFICATIONS:

Part number SH-CHB-xxxx-	Inductance (µH)	DC R(Ω)Max.				IDC(A)				Part number SH-CHB-xxxx-	Inductance (µH)	DC R(Ω)Max.		IDC(A)
		1006	1008	1010	1014	1006	1008	1010	1014			1014	1014	
6R3M	6.3				0.260				4.30	122K	1200	2.20	0.46	
7R5M	7.5				0.290				4.20	152K	1500	2.50	0.41	
100M	10				0.033	3.60	4.50	5.30	4.00	182K	1800	2.90	0.36	
120M	12	0.044	0.031	0.023	0.035	3.30	4.10	4.90	3.90	222K	2200	3.20	0.32	
150M	15	0.058	0.035	0.026	0.039	2.90	3.70	4.40	3.70	272K	2700	3.70	0.29	
180M	18	0.064	0.049	0.033	0.047	2.70	3.40	4.00	3.50	332K	3300	5.00	0.27	
220M	22	0.088	0.055	0.037	0.051	2.40	3.10	3.60	3.30	392K	3900	5.60	0.25	
270M	27	0.100	0.062	0.048	0.057	2.20	2.80	3.30	3.10	472K	4700	7.40	0.23	
330M	33	0.110	0.079	0.055	0.064	2.00	2.50	2.90	2.90	562K	5600	8.20	0.21	
390M	39	0.140	0.087	0.073	0.074	1.80	2.30	2.70	2.70	682K	6800	11.9	0.19	
470M	47	0.160	0.099	0.083	0.083	1.70	2.10	2.50	2.50	822K	8200	14.0	0.17	
560M	56	0.190	0.130	0.092	0.104	1.50	1.90	2.30	2.30	103K	10000	16.0	0.16	
680M	68	0.220	0.140	0.120	0.117	1.40	1.70	2.10	2.10	123K	12000	21.0	0.15	
820M	82	0.290	0.160	0.140	0.130	1.30	1.60	1.90	1.90	153K	15000	24.0	0.14	
101K	100	0.320	0.210	0.160	0.143	1.30	1.40	1.70	1.70	183K	18000	27.0	0.13	
121K	120	0.380	0.240	0.200	0.195	1.20	1.30	1.50	1.50	223K	22000	34.0	0.12	
151K	150	0.500	0.320	0.230	0.221	1.00	1.20	1.40	1.40	273K	27000	39.0	0.11	
181K	180	0.560	0.350	0.310	0.260	0.84	1.10	1.30	1.30	333K	33000	51.0	0.10	
221K	220	0.780	0.450	0.340	0.350	0.76	0.96	1.10	1.20	393K	39000	58.0	0.09	
271K	270	0.920	0.610	0.400	0.390	0.69	0.87	1.00	1.10					
331K	330	1.10	0.690	0.520	0.520	0.62	0.79	0.93	1.00					
391K	390	1.30	0.780	0.650	0.570	0.57	0.72	0.86	0.92					
471K	470	1.50	1.00	0.710	0.650	0.52	0.66	0.78	0.84					
561K	560	1.90	1.20	1.00	0.790	0.48	0.60	0.71	0.75					
681K	680	2.20	1.40	1.10	0.960	0.43	0.55	0.65	0.69					
821K	820	2.60	1.80	1.30	1.22	0.40	0.50	0.59	0.62					
102K	1000	3.20	2.10	1.70	1.60	0.36	0.45	0.53	0.52					

Note: 1. K=±10%, M=±20%

# SH-IFC 1010 SERIES THROUGH-HOLE RADIAL FLAT POWER INDUCTORS



## FEATURES:

- Ferrite Core
- Wire-wound construction
- Narrow Design for densely mount
- High reliability, Ideal for automatic insertion
- Small Size, Low Cost
- Wide Range of Inductance Values
- High Q SRF
- Packaging:  
Tape & Reel is Standard  
Bulk packaging available for smaller quantities
- Tolerance: 10% is standard  
tighter tolerances available
- VCRs, PDP, LCD, TV set
- Automotive Systems
- Computer Peripheral Equipment
- GPS, DC/DC convertor, XDSL Modem
- Electronic Games
- Communications Equipment
- General Electronic Applications

## TECHNICAL INFORMATION:

- IDC Max:  
Determined when superimposed
- Testing: (Equivalent acceptable)  
Inductance: HP4342A  
RDC: QuadTech 1880 Milliohmmeter  
Q- HP4342A- SRF-HP4191A  
DC current is decreased 10% against its initial value
- Operating temperature: -40°C to +105°C
- Storage Temperature: -40°C to +105°C
- Solder methods: Vapor Phase, Infrared Reflow
- Resistance to soldering heat: 260°C for 10 seconds
- Solvent resistance: Conforms to MIL-STD-202E
- Marking: Inductance & Tolerance

Note: All specifications subject to change without notice



Additional information:

We reserve the right to make technical changes or modify the contents of this document without prior notice.

SHARE Ltd. Does not accept any responsibility what so ever for potential errors or possible lack of information in this document.

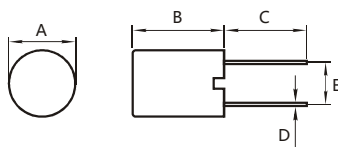
We can offer that even custom-made transformers will be covered by approvals from UL, CSA, KEMA, etc., but we will be happy to assist you in implementing them. New approvals may be required.

## STANDARD SPECIFICATIONS:

Part Number	L (μH)	L Test Freq (MHz)	Q (Min)	Q Test Freq (MHz)	DCR (ΩMax)	IDC (Amax)	Part Number	L (μH)	L Test Freq (MHz)	Q (Min)	Q Test Freq (MHz)	DCR (ΩMax)	IDC (Amax)
SH-IFC1010-1R0K	1.0	7.96	45	7.96	0.015	7.0	SH-IFC1010-820K	82	2.52	50	2.52	1.198	0.86
SH-IFC1010-1R2K	1.2	7.96	39	7.96	0.012	6.0	SH-IFC1010-101K	100	0.796	80	0.796	1.600	0.70
SH-IFC1010-1R5K	1.5	7.96	33	7.96	0.014	5.0	SH-IFC1010-121K	120	0.796	70	0.796	1.725	0.65
SH-IFC1010-1R8K	1.8	7.96	37	7.96	0.020	4.8	SH-IFC1010-151K	150	0.796	70	0.796	1.855	0.60
SH-IFC1010-2R2K	2.2	7.96	38	7.96	0.025	4.4	SH-IFC1010-181K	180	0.796	70	0.796	2.070	0.58
SH-IFC1010-2R5K	2.5	7.96	40	7.96	0.030	4.1	SH-IFC1010-221K	220	0.796	50	0.796	2.105	0.49
SH-IFC1010-2R7K	2.7	7.96	43	7.96	0.028	4.0	SH-IFC1010-251K	250	0.796	40	0.796	2.700	0.49
SH-IFC1010-3R3K	3.3	7.96	35	7.96	0.036	3.7	SH-IFC1010-331K	330	0.796	50	0.796	3.335	0.41
SH-IFC1010-3R9K	3.9	7.96	37	7.96	0.050	3.4	SH-IFC1010-391K	390	0.796	45	0.796	3.450	0.39
SH-IFC1010-4R7K	4.7	7.96	37	7.96	0.053	3.2	SH-IFC1010-471K	470	0.796	40	0.796	5.290	0.35
SH-IFC1010-5R0K	5.0	7.96	40	7.96	0.080	2.90	SH-IFC1010-561K	560	0.796	40	0.796	5.405	0.32
SH-IFC1010-5R6K	5.6	7.96	38	7.96	0.092	2.80	SH-IFC1010-681K	680	0.796	45	0.796	5.930	0.29
SH-IFC1010-6R8K	6.8	7.96	29	7.96	0.113	2.60	SH-IFC1010-751K	750	0.796	30	0.796	4.200	0.28
SH-IFC1010-8R2K	8.2	2.52	30	2.52	0.110	2.50	SH-IFC1010-821K	820	0.796	40	0.796	6.325	0.27
SH-IFC1010-100K	10	2.52	80	2.52	0.190	2.10	SH-IFC1010-102K	1000	0.252	70	0.252	8.600	0.21
SH-IFC1010-120K	12	2.52	40	2.52	0.140	2.00	SH-IFC1010-122K	1200	0.252	70	0.252	10.00	0.21
SH-IFC1010-150K	15	2.52	40	2.52	0.158	1.60	SH-IFC1010-152K	1500	0.252	62	0.252	14.26	0.19
SH-IFC1010-180K	18	2.52	40	2.52	0.180	1.60	SH-IFC1010-182K	1800	0.252	62	0.252	15.76	0.17
SH-IFC1010-220K	22	2.52	40	2.52	0.230	1.40	SH-IFC1010-222K	2200	0.252	60	0.252	17.70	0.15
SH-IFC1010-250K	25	2.52	50	2.52	0.500	1.30	SH-IFC1010-252K	2500	0.252	60	0.252	18.00	0.14
SH-IFC1010-270K	27	2.52	50	2.52	0.2835	1.30	SH-IFC1010-272K	2700	0.252	60	0.252	19.10	0.14
SH-IFC1010-330K	33	2.52	45	2.52	0.346	1.20	SH-IFC1010-332K	3300	0.252	50	0.252	21.74	0.13
SH-IFC1010-390K	39	2.52	45	2.52	0.371	1.10	SH-IFC1010-392K	3900	0.252	50	0.252	26.00	0.12
SH-IFC1010-470K	47	2.52	45	2.52	0.502	1.03	SH-IFC1010-472K	4700	0.252	50	0.252	28.90	0.11
SH-IFC1010-500K	50	2.52	40	2.52	1.100	1.00	SH-IFC1010-602K	6000	0.252	35	0.252	31.00	0.10
SH-IFC1010-560K	56	2.52	40	2.52	0.687	0.95	SH-IFC1010-752K	7500	0.252	25	0.252	50.00	0.08
SH-IFC1010-680K	68	2.52	40	2.52	0.808	0.90	SH-IFC1010-103K	10000	0.252	25	0.252	70.00	0.07
SH-IFC1010-750K	75	2.52	40	2.52	1.200	0.86							

Note: 1. K = ±10%, M = ±20%

# SH-GB 0709C-0809C SERIES THROUGH-HOLE RADIAL ENCAPSULATED POWER INDUCTOR



## FEATURES:

- Plastic housing
- Water proof structure Ferrite Core
- Excellent Mechanical Strength
- Excellent Solderability
- High Reliability
- Packaging:  
Tape & Reel is standard (Qty:2000pcs)  
Bulk packaging available for smaller quantities
- Tolerance:10% and 5% is standard,  
tighter tolerances available
- VCRs, PDP, LCD, TV set
- Automotive Systems
- Computer Peripheral Equipment
- GPS, DC/DC converter, XDSL Modem
- Electronic Games
- Communications Equipment
- General Electronic Applications

## TECHNICAL INFORMATION:

- Testing: (Equivalent acceptable)
- Inductance:HP4284A
- RDC:QuadTech 1880 Milliohmeter
- Q- HP4342A - SRF-HP4191A
- IDC Max is decreased 10% against its initial value
- Operating temperature: -40°C to +105°C
- Storage Temperature: -40°C to +105°C
- Solder methods: Vapor Phase,Infrared Reflow
- Resistance to soldering heat:260°C for 10 seconds
- Solvent resistance: Conforms to MIL-STD-202E
- Marking: Inductance & Tolerance

Note:All specifications subject to change without notice

Part number	A	B	C	D	E
SH-GB0709C	8.0Max	9.6Max	5.0Min	0.6	5.0
SH-GB0809C	9.0Max	9.6Max	5.0Min	0.6	5.0

dimension(mm)



Additional information:

We reserve the right to make technical changes or modify the contents of this document without prior notice.

SHARE Ltd. Does not accept any responsibility what so ever for potential errors or possible lack of information in this document.

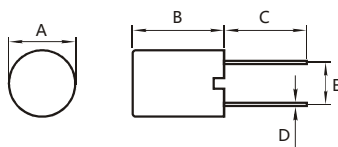
We can offer that even custom-made transformers will be covered by approvals from UL, CSA, KEMA, etc., but we will be happy to assist you in implementing them. New approvals may be required.

## STANDARD SPECIFICATIONS:

Part Number	L μH	Test Freq KHz	DCR Ω Max	IDC Max A	Part Number	L μH	Test Freq KHz	DCR Ω Max	IDC Max A
SH-GB0709C-1R0M	1.00	1	0.006	5.00	SH-GB0809C-2R2M	2.20	1	0.011	4.00
SH-GB0709C-1R5M	1.50	1	0.008	4.30	SH-GB0809C-3R3M	3.30	1	0.013	3.40
SH-GB0709C-2R2M	2.20	1	0.011	3.70	SH-GB0809C-4R7M	4.70	1	0.017	3.00
SH-GB0709C-3R3M	3.30	1	0.018	2.90	SH-GB0809C-6R8M	6.80	1	0.023	2.60
SH-GB0709C-4R7M	4.70	1	0.022	2.60	SH-GB0809C-100M	10	1	0.031	2.20
SH-GB0709C-6R8M	6.80	1	0.028	2.30	SH-GB0809C-150M	15	1	0.042	1.90
SH-GB0709C-100M	10	1	0.043	1.90	SH-GB0809C-220M	22	1	0.070	1.50
SH-GB0709C-150M	15	1	0.056	1.60	SH-GB0809C-330M	33	1	0.092	1.20
SH-GB0709C-220M	22	1	0.086	1.30	SH-GB0809C-470M	47	1	0.130	1.00
SH-GB0709C-330M	33	1	0.140	1.00	SH-GB0809C-680M	68	1	0.160	0.97
SH-GB0709C-470M	47	1	0.170	0.94	SH-GB0809C-101K	100	1	0.230	0.81
SH-GB0709C-680M	68	1	0.280	0.73	SH-GB0809C-151K	150	1	0.400	0.61
SH-GB0709C-101K	100	1	0.330	0.67	SH-GB0809C-221K	220	1	0.530	0.53
SH-GB0709C-151K	150	1	0.560	0.52	SH-GB0809C-331K	330	1	0.780	0.44
SH-GB0709C-221K	220	1	0.720	0.46	SH-GB0809C-471K	470	1	1.000	0.39
SH-GB0709C-331K	330	1	1.100	0.37	SH-GB0809C-681K	680	1	1.500	0.32
SH-GB0709C-471K	470	1	1.700	0.30	SH-GB0809C-102K	1000	1	2.200	0.26
SH-GB0709C-681K	680	1	2.300	0.26	SH-GB0809C-152K	1500	1	3.500	0.21
SH-GB0709C-102K	1000	1	4.300	0.19					
SH-GB0709C-152K	1500	1	5.000	0.16					

Note:1. K=±10%,M=±20%

# SH-GB 112C-1315C SERIES THROUGH-HOLE RADIAL ENCAPSULATED POWER INDUCTOR



## FEATURES:

- Plastic housing
- Water proof structure Ferrite Core
- Excellent Mechanical Strength
- Excellent Solderability
- High Reliability
- Packaging:  
Tape & Reel is standard (Qty:2000pcs)  
Bulk packaging available for smaller quantities
- Tolerance:10% and 5% is standard,  
tighter tolerances available
- VCRs, PDP, LCD, TV set
- Automotive Systems
- Computer Peripheral Equipment
- GPS, DC/DC converter, XDSL Modem
- Electronic Games
- Communications Equipment
- General Electronic Applications

## TECHNICAL INFORMATION:

- Testing: (Equivalent acceptable)  
Inductance:HP4284A  
RDC:QuadTech 1880 Milliohmmer  
Q- HP4342A - SRF-HP4191A  
IDC Max is decreased 10% against its initial value
- Operating temperature: -40°C to +105°C
- Storage Temperature: -40°C to +105°C
- Solder methods: Vapor Phase, Infrared Reflow
- Resistance to soldering heat: 260°C for 10 seconds
- Solvent resistance: Conforms to MIL-STD-202E
- Marking: Inductance & Tolerance

Note: All specifications subject to change without notice

Part number	A	B	C	D	E
SH-GB1112C	11.5Max	12.5Max	5.0Min	0.6	5.0
SH-GB1315C	14.0Max	17.0Max	5.0Min	0.6	5.0

dimension(mm)



## Additional information:

We reserve the right to make technical changes or modify the contents of this document without prior notice.

SHARE Ltd. Does not accept any responsibility what so ever for potential errors or possible lack of information in this document.

We can offer that even custom-made transformers will be covered by approvals from UL, CSA, KEMA, etc., but we will be happy to assist you in implementing them. New approvals may be required.

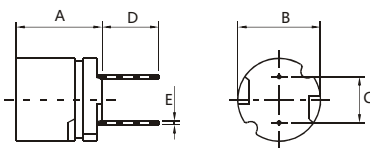
## STANDARD SPECIFICATIONS:

Part Number	L μH	Test Freq KHz	DCR Ω Max	IDC Max A	Part Number	L μH	Test Freq KHz	DCR Ω Max	IDC Max A
SH-GB1112C-3R3M	3.30	1	0.010	5.90	SH-GB1315C-100M	10	1	0.023	5.10
SH-GB1112C-4R7M	4.70	1	0.015	4.80	SH-GB1315C-150M	15	1	0.028	4.50
SH-GB1112C-6R8M	6.80	1	0.016	4.60	SH-GB1315C-220M	22	1	0.035	4.20
SH-GB1112C-100M	10	1	0.025	3.70	SH-GB1315C-330M	33	1	0.043	3.70
SH-GB1112C-150M	15	1	0.029	3.40	SH-GB1315C-470M	47	1	0.052	3.40
SH-GB1112C-220M	22	1	0.040	2.90	SH-GB1315C-680M	68	1	0.068	3.00
SH-GB1112C-330M	33	1	0.062	2.30	SH-GB1315C-101K	100	1	0.097	2.50
SH-GB1112C-470M	47	1	0.075	2.10	SH-GB1315C-151K	150	1	0.140	2.10
SH-GB1112C-680M	68	1	0.130	1.60	SH-GB1315C-221K	220	1	0.200	1.70
SH-GB1112C-101K	100	1	0.160	1.40	SH-GB1315C-331K	330	1	0.300	1.40
SH-GB1112C-151K	150	1	0.260	1.10	SH-GB1315C-471K	470	1	0.430	1.10
SH-GB1112C-221K	220	1	0.330	1.00	SH-GB1315C-681K	680	1	0.610	0.99
SH-GB1112C-331K	330	1	0.520	0.82	SH-GB1315C-102K	1000	1	1.000	0.78
SH-GB1112C-471K	470	1	0.660	0.72	SH-GB1315C-152K	1500	1	1.300	0.68
SH-GB1112C-681K	680	1	1.100	0.56	SH-GB1315C-222K	2200	1	2.000	0.55
SH-GB1112C-102K	1000	1	1.400	0.50	SH-GB1315C-332K	3300	1	3.100	0.44
SH-GB1112C-152K	1500	1	2.400	0.38	SH-GB1315C-472K	4700	1	4.400	0.37
SH-GB1112C-222K	2200	1	3.200	0.33	SH-GB1315C-682K	6800	1	6.500	0.30
SH-GB1112C-332K	3300	1	4.900	0.26	SH-GB1315C-103K	10000	1	10.00	0.24
SH-GB1112C-472K	4700	1	7.600	0.21					
SH-GB1112C-682K	6800	1	9.800	0.18					
SH-GB1112C-103K	10000	1	18.00	0.14					
SH-GB1112C-153K	15000	1	24.00	0.12					

Note: 1. K=±10%, M=±20%



# SH-GS 0606-0708 SERIES THROUGH-HOLE RADIAL SHIELDED POWER INDUCTOR



## TECHNICAL INFORMATION:

### FEATURES:

- Magnetically Shielded Construction
- Heat Resistant Molded Resin
- Excellent Mechanical Strength
- Excellent Solderability
- High Reliability
- Low Profile
- Packaging: Tape & Reel is standard (Qty: 2000 pcs)
- Bulk packaging available for smaller quantities
- Tolerance: 10% and 5% is standard, tighter tolerances available
- VCRs, AC/DC, DC/DC Converter
- Video Cameras
- Communication System
- Automotive Systems
- Liquid Crystal Televisions
- Power Supplier
- Network Systems
- Computer Peripheral Equipment

- Testing: (Equivalent acceptable)
- Inductance: HP4284A
- RDC: QuadTech 1880 Milliohmmeter
- Q- HP4342A - SRF-HP4191A
- IDC Max is decreased 10% against its initial value
- Operating temperature: -40°C to +105°C
- Storage Temperature: -40°C to +105°C
- Solder methods: Vapor Phase, Infrared Reflow
- Resistance to soldering heat: 260°C for 10 seconds
- Solvent resistance: Conforms to MIL-STD-202E
- Marking: Inductance & Tolerance

Note: All specifications subject to change without notice

Part number	A	B	C	D	E
SH-GS0606	6.5Max	6.0±0.5	4.0±0.5	4.0Min	0.55
SH-GS0708	7.5Max	7.8±0.5	5.0±0.5	4.0Min	0.65

dimension(mm)



### Additional information:

We reserve the right to make technical changes or modify the contents of this document without prior notice.

SHARE Ltd. Does not accept any responsibility what so ever for potential errors or possible lack of information in this document.

We can offer that even custom-made transformers will be covered by approvals from UL, CSA, KEMA, etc., but we will be happy to assist you in implementing them. New approvals may be required.

### STANDARD SPECIFICATIONS:

Part Number	L μH	Test Freq Mhz	DCR Ω Max	IDC Max mA	Part Number	L μH	Test Freq Mhz	DCR Ω Max	IDC Max mA
SH-GS0606-220M	22	2.52	0.13	960	SH-GS0708-220M	22	2.52	0.08	1600
SH-GS0606-270M	27	2.52	0.18	870	SH-GS0708-270M	27	2.52	0.10	1400
SH-GS0606-330M	33	2.52	0.21	780	SH-GS0708-330M	33	2.52	0.14	1300
SH-GS0606-390M	39	2.52	0.26	720	SH-GS0708-390M	39	2.52	0.15	1200
SH-GS0606-470M	47	2.52	0.29	660	SH-GS0708-470M	47	2.52	0.17	1100
SH-GS0606-560K	56	2.52	0.33	600	SH-GS0708-560K	56	2.52	0.19	990
SH-GS0606-680K	68	2.52	0.36	550	SH-GS0708-680K	68	2.52	0.21	890
SH-GS0606-820K	82	2.52	0.39	500	SH-GS0708-820K	82	2.52	0.27	810
SH-GS0606-101K	100	0.001	0.54	450	SH-GS0708-101K	100	0.001	0.32	740
SH-GS0606-121K	120	0.001	0.62	410	SH-GS0708-121K	120	0.001	0.36	670
SH-GS0606-151K	150	0.001	0.72	370	SH-GS0708-151K	150	0.001	0.51	600
SH-GS0606-181K	180	0.001	0.88	340	SH-GS0708-181K	180	0.001	0.57	550
SH-GS0606-221K	220	0.001	0.99	300	SH-GS0708-221K	220	0.001	0.76	500
SH-GS0606-271K	270	0.001	1.52	270	SH-GS0708-271K	270	0.001	0.86	450
SH-GS0606-331K	330	0.001	1.69	250	SH-GS0708-331K	330	0.001	0.97	410
SH-GS0606-391K	390	0.001	1.85	230	SH-GS0708-391K	390	0.001	1.28	370
SH-GS0606-471K	470	0.001	2.85	210	SH-GS0708-471K	470	0.001	1.44	340
SH-GS0606-561K	560	0.001	3.21	190	SH-GS0708-561K	560	0.001	1.61	310
SH-GS0606-681K	680	0.001	3.60	170	SH-GS0708-681K	680	0.001	2.07	280
SH-GS0606-821K	820	0.001	4.87	160	SH-GS0708-821K	820	0.001	2.33	260
SH-GS0606-102K	1000	0.001	5.65	140	SH-GS0708-102K	1000	0.001	2.72	230
					SH-GS0708-122K	1200	0.001	3.98	210
					SH-GS0708-152K	1500	0.001	4.50	190
					SH-GS0708-182K	1800	0.001	6.81	170
					SH-GS0708-222K	2200	0.001	7.56	160
					SH-GS0708-272K	2700	0.001	8.54	140
					SH-GS0708-332K	3300	0.001	9.74	130
					SH-GS0708-392K	3900	0.001	12.9	120
					SH-GS0708-472K	4700	0.001	14.7	110
					SH-GS0708-562K	5600	0.001	20.4	99
					SH-GS0708-682K	6800	0.001	23.0	89
					SH-GS0708-822K	8200	0.001	30.6	81
					SH-GS0708-102K	10000	0.001	35.0	74

Note: 1. K=±10%, M=±20%, N=±30%

# SH-GS 1014-1159 SERIES THROUGH-HOLE RADIAL SHIELDED POWER INDUCTOR



## FEATURES:

- Magnetically Shielded Construction
- Heat Resistant Molded Resin
- Excellent Mechanical Strength
- Excellent Solderability
- High Reliability
- Low Profile
- Packaging: Tape & Reel is standard (Qty:2000pcs)
- Bulk packaging available for smaller quantities
- Tolerance: 10% and 5% is standard, tighter tolerances available
- VCRs, AC/DC, DC/DC Converter
- Video Cameras
- Communication System
- Automotive Systems
- Liquid Crystal Televisions
- Power Supplier
- Network Systems
- Computer Peripheral Equipment

## TECHNICAL INFORMATION:

- Testing: (Equivalent acceptable)
- Inductance: HP4284A
- RDC: QuadTech 1880 Milliohm meter
- Q: HP4342A - SRF-HP4191A
- IDC Max is decreased 10% against its initial value
- Operating temperature: -40°C to +105°C
- Storage Temperature: -40°C to +105°C
- Solder methods: Vapor Phase, Infrared Reflow
- Resistance to soldering heat: 260°C for 10 seconds
- Solvent resistance: Conforms to MIL-STD-202E
- Marking: Inductance & Tolerance

Note: All specifications subject to change without notice



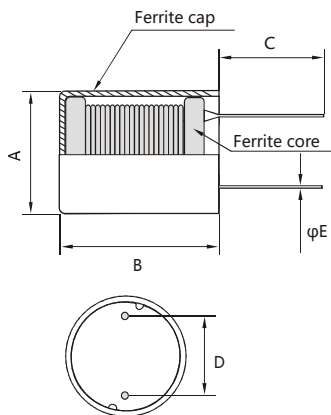
### Additional information:

We reserve the right to make technical changes or modify the contents of this document without prior notice.

SHARE Ltd. Does not accept any responsibility what so ever for potential errors or possible lack of information in this document.

We can offer that even custom-made transformers will be covered by approvals from UL, CSA, KEMA, etc., but we will be happy to assist you in implementing them. New approvals may be required.

## STANDARD SPECIFICATIONS:



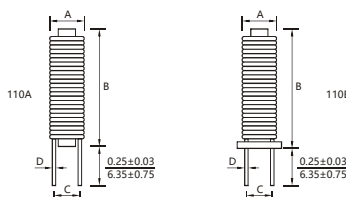
Part Number	A	B	C	D	E
SH-GS1009	11.0Max	9.5Max	5.0Min	5.0±0.5	0.7
SH-GS1014	11.0Max	14.0Max	5.0Min	5.0±0.5	0.7
SH-GS1216	12.5Max	16.0Max	5.0Min	5.0±0.5	0.8
SH-GS1519	16.0Max	19.5Max	5.0Min	7.5±0.5	0.8

dimension(mm)

Part Number	L mH	Test Freq Khz	Q Min	DCR (Ω) Max	IDC Max mA
SH-GS1014-122K	1.2	1	50	1.2	200
SH-GS1014-152K	1.5	1	50	1.5	200
SH-GS1014-182K	1.8	1	50	1.6	200
SH-GS1014-222K	2.2	1	50	1.8	200
SH-GS1014-272K	2.7	1	40	1.9	200
SH-GS1014-332K	3.3	1	40	2.3	200
SH-GS1014-392K	3.9	1	40	2.5	200
SH-GS1014-472K	4.7	1	40	3.7	140
SH-GS1014-502K	5.0	1	40	3.8	140
SH-GS1014-562K	5.6	1	40	4.0	140
SH-GS1014-682K	6.8	1	40	4.2	140
SH-GS1014-822K	8.2	1	40	5.3	140
SH-GS1014-103K	10	1	100	7.3	100
SH-GS1014-123K	12	1	100	8.3	100
SH-GS1014-153K	15	1	100	11.0	90
SH-GS1014-183K	18	1	100	13.6	75
SH-GS1014-223K	22	1	100	15.4	75
SH-GS1014-273K	27	1	100	17.9	75
SH-GS1014-333K	33	1	100	23.3	60
SH-GS1014-393K	39	1	100	25.9	60
SH-GS1014-473K	47	1	80	30.4	60
SH-GS1014-503K	50	1	80	37.8	50
SH-GS1014-563K	56	1	80	39.1	50
SH-GS1014-683K	68	1	50	40	50
SH-GS1014-823K	82	1	50	47	40
SH-GS1014-104K	100	1	120	50	40
SH-GS1014-124K	120	1	100	91	30
SH-GS1014-154K	150	1	90	140	20
SH-GS1014-184K	180	1	90	164	20
SH-GS1014-224K	220	1	90	182	20
SH-GS1014-274K	270	1	90	200	20
SH-GS1014-334K	330	1	80	275	15
SH-GS1014-394K	390	1	80	300	15
SH-GS1014-474K	470	1	80	345	15
SH-GS1014-564K	560	1	60	520	8.4
SH-GS1014-684K	680	1	60	590	8.4
SH-GS1014-824K	820	1	50	675	8.4
SH-GS1014-105K	1000	1	50	770	8.4
SH-GS1014-125K	1200	1	50	845	8.4

Note: 1. K=±10%, M=±20%

# SH-RH-110A&B SERIES THROUGH-HOLE RADIAL ROD CORE POWER INDUCTOR



All Dimension in inches/mm



Additional information:

We reserve the right to make technical changes or modify the contents of this document without prior notice.

SHARE Ltd. Does not accept any responsibility what so ever for potential errors or possible lack of information in this document.

We can offer that even custom-made transformers will be covered by approvals from UL, CSA, KEMA, etc., but we will be happy to assist you in implementing them. New approvals may be required.

## FEATURES:

- High Saturation Material
- Polyolefin Shrink Tubing
- Low DC Resistance
- High Reliability Low cost
- Bulk Packaging is standard
- Custom Design Available
- Switching Regulators
- RFI Suppression Filters
- SCR and TRIAC Controls
- Automotive Systems

## TECHNICAL INFORMATION:

- Testing: (Equivalent acceptable)  
Inductance: HP4284A  
RDC: QuadTech 1880 Milliohmmer  
Q- HP4342A - SRF-HP4191A  
IDC Max is decreased 10% against its initial value
- Operating temperature: -40°C to +105°C
- Storage Temperature: -40°C to +105°C
- Solder methods: Vapor Phase, Infrared Reflow
- Resistance to soldering heat: 260°C for 10 seconds
- Solvent resistance: Conforms to MIL-STD-202E
- Marking: Inductance & Tolerance

Note: All specifications subject to change without notice

## STANDARD SPECIFICATIONS:

Part Number SH-RH-110A & B	L (μH)	IDC (A)	RDC (ΩMax)	A Max	B Max	C ±0.015/0.38	D ±0.004/0.10
SH-RH-110A-1R0L-25	1	25	0.002	0.60/15.2	0.68/17.3	0.42/10.7	0.068/1.73
SH-RH-110A-1R0L-10	1	10	0.002	0.50/12.7	0.75/19.1	0.42/10.7	0.054/1.37
SH-RH-110A-3R3L-10	3.3	10	0.005	0.5/12.7	1.0/25.4	0.42/10.7	0.054/1.37
SH-RH-110A-4R7L-03	4.7	3	0.021	0.51/13.0	0.75/19.1	0.42/10.7	0.035/0.89
SH-RH-110A-4R7L-05	4.7	5	0.012	0.50/12.7	0.75/19.1	0.42/10.7	0.042/1.07
SH-RH-110A-4R7L-10	4.7	10	0.012	0.50/12.7	1.0/25.4	0.42/10.7	0.054/1.37
SH-RH-110A-4R7L-20	4.7	20	0.004	0.53/13.5	1.2/30.5	0.42/10.7	0.068/1.73
SH-RH-110A-100K-03	10	3	0.023	0.50/12.7	0.75/19.1	0.42/10.7	0.035/0.89
SH-RH-110A-100K-05	10	5	0.017	0.50/12.7	0.75/19.1	0.42/10.7	0.042/1.07
SH-RH-110A-100K-10	10	10	0.015	0.52/13.2	1.0/25.4	0.42/10.7	0.054/1.37
SH-RH-110A-100K-20	10	20	0.006	0.75/19.1	1.8/45.7	0.60/15.2	0.075/1.91
SH-RH-110A-150K-03	15	3	0.025	0.50/12.7	1.0/25.4	0.42/10.7	0.035/0.89
SH-RH-110A-150K-10	15	10	0.020	0.52/13.2	1.0/25.4	0.42/10.7	0.054/1.37
SH-RH-110A-220K-03	22	3	0.035	0.50/12.7	1.0/25.4	0.42/10.7	0.035/0.89
SH-RH-110A-220K-05	22	5	0.023	0.50/12.7	1.0/25.4	0.42/10.7	0.042/1.07
SH-RH-110A-220K-10	22	10	0.015	0.66/16.8	1.3/33.0	0.42/10.7	0.060/1.52
SH-RH-110A-270K-05	27	5	0.024	0.50/12.7	1.0/25.4	0.49/12.5	0.042/1.07
SH-RH-110A-330K-12	33	12	0.017	0.70/17.8	1.3/33.0	0.55/14.0	0.060/1.52
SH-RH-110A-470K-03	47	3	0.050	0.55/14.0	1.0/25.4	0.42/10.7	0.035/0.89
SH-RH-110A-470K-05	47	5	0.035	0.65/16.5	1.1/28.0	0.70/17.8	0.042/1.07
SH-RH-110A-470K-10	47	10	0.022	0.85/21.8	1.3/33.0	0.70/17.8	0.060/1.52
SH-RH-110A-820K-03	82	3	0.110	0.50/12.7	0.65/16.5	0.375/9.5	0.028/0.71
SH-RH-110A-101K-01	100	1	0.190	0.40/10.2	0.90/22.9	0.30/7.6	0.020/0.51
SH-RH-110A-101K-03	100	3	0.072	0.55/14.0	1.2/30.5	0.70/17.8	0.035/0.89
SH-RH-110A-101K-05	100	5	0.055	0.65/16.5	1.3/33.0	0.70/17.8	0.042/1.07
SH-RH-110A-151K-03	150	3	0.140	0.60/15.2	1.2/30.5	0.43/10.9	0.028/0.71
SH-RH-110A-151K-05	150	5	0.065	0.65/16.5	1.3/33.0	0.70/17.8	0.042/1.07
SH-RH-110A-181K-05	180	5	0.110	0.65/16.5	1.3/33.0	0.70/17.8	0.042/1.07
SH-RH-110A-221K-03	220	3	0.210	0.55/14.0	1.2/30.5	0.42/10.7	0.025/0.64
SH-RH-110A-271K-04	270	4	0.250	0.95/24	0.72/18.3	0.71/18	0.030/0.76
SH-RH-110A-271K-10	270	10	0.160	1.1/28	1.0/25.4	0.72/18.3	0.038/0.97
SH-RH-110A-391K-03	390	3	0.250	1.1/28	1.0/25.4	0.72/18.3	0.035/0.89
SH-RH-110A-391K-05	390	5	0.190	1.1/28	1.0/25.4	0.72/18.3	0.038/0.97

Note: 1. K=±10%, M=±20%, N=±30%

# SH-IRD 01 SERIES THROUGH-HOLE RADIAL HIGH CURRENT POWER CHOKES



Additional information:

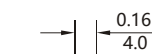
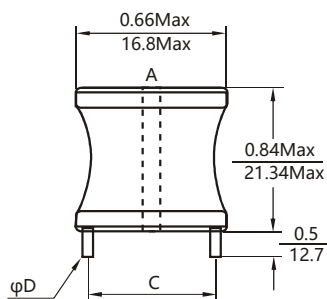
We reserve the right to make technical changes or modify the contents of this document without prior notice.

SHARE Ltd. Does not accept any responsibility what so ever for potential errors or possible lack of information in this document.

We can offer that even custom-made transformers will be covered by approvals from UL, CSA, KEMA, etc., but we will be happy to assist you in implementing them.

New approvals may be required.

## STANDARD SPECIFICATIONS:



DIMENSIONS:  $\frac{\text{inch}}{\text{mm}}$



## FEATURES:

- High Saturation Material
- Polyolefin Shrink Tubing
- Low DC Resistance
- High Reliability Low cost
- Packaging: Tape & Reel is Standard  
Bulk packaging available for smaller quantities
- Tolerance: 10% is standard, tighter tolerances available.
- Switching Regulators
- RFI Suppression Filters
- SCR and TRIAC Controls
- Automotive Systems

## TECHNICAL INFORMATION:

- Inductance Testing: HP4284A, HP4285A or equivalent
- RDC: QuadTech 1880 Milliohm meter
- Q- HP4342A
- SRF-HP4191A or HP4194A
- Rated Current L value drop 10% typ. at l<sub>dc</sub> against its initial value
- Temperature rise 40°C Max Reference ambient temperature
- Solderability: 75% of the lead wire shall be covered
- Soldering Methods: Wave, Reflow
- Operating Temperature: -25°C to +85°C
- Storage Temperature: -55°C to +125°C
- Terminal bending strength: 24.5N Min
- Moisture resistance:  $\Delta L/L \leq \pm 10\%$   $\Delta Q/Q \leq \pm 25\%$

Note: All specifications subject to change without notice.

Part Number	L ( $\mu\text{H}$ ) @1KHz	DCR ( $\Omega\text{Max}$ )	IDC (A Max)	Dim(Inches/mm) C Approx.	Dim(Inches/mm) D Nom.
SH-IRD01-1R0M	1.0	0.003	9	0.55/13.97	0.051/1.30
SH-IRD01-1R2M	1.2	0.003	9	0.55/13.97	0.051/1.30
SH-IRD01-1R5M	1.5	0.004	9	0.55/13.97	0.051/1.30
SH-IRD01-1R8M	1.8	0.004	9	0.55/13.97	0.051/1.30
SH-IRD01-2R2M	2.2	0.005	9	0.55/13.97	0.051/1.30
SH-IRD01-2R7M	2.7	0.005	9	0.55/13.97	0.051/1.30
SH-IRD01-3R3M	3.3	0.005	9	0.55/13.97	0.051/1.30
SH-IRD01-3R9M	3.9	0.006	9	0.55/13.97	0.051/1.30
SH-IRD01-4R7M	4.7	0.007	9	0.55/13.97	0.051/1.30
SH-IRD01-5R6M	5.6	0.007	9	0.55/13.97	0.051/1.30
SH-IRD01-6R8M	6.8	0.008	9	0.55/13.97	0.051/1.30
SH-IRD01-8R2M	8.2	0.009	9	0.55/13.97	0.051/1.30
SH-IRD01-100K	10	0.010	9	0.55/13.97	0.051/1.30
SH-IRD01-120K	12	0.011	9	0.55/13.97	0.051/1.30
SH-IRD01-150K	15	0.015	7.2	0.53/13.46	0.045/1.14
SH-IRD01-180K	18	0.016	7.2	0.53/13.46	0.045/1.14
SH-IRD01-220K	22	0.020	5.5	0.53/13.46	0.045/1.14
SH-IRD01-270K	27	0.030	4.5	0.53/13.46	0.040/1.01
SH-IRD01-330K	33	0.040	4.0	0.53/13.46	0.040/1.01
SH-IRD01-390K	39	0.046	4.0	0.53/13.46	0.040/1.01
SH-IRD01-470K	47	0.062	2.8	0.53/13.46	0.036/0.91
SH-IRD01-560K	56	0.069	2.8	0.53/13.46	0.036/0.91
SH-IRD01-680K	68	0.077	2.8	0.50/12.70	0.032/0.81
SH-IRD01-820K	82	0.083	2.8	0.50/12.70	0.032/0.81
SH-IRD01-101K	100	0.095	2.8	0.50/12.70	0.032/0.81
SH-IRD01-121K	120	0.127	2.0	0.50/12.70	0.029/0.73
SH-IRD01-151K	150	0.181	1.6	0.50/12.70	0.029/0.73
SH-IRD01-181K	180	0.217	1.6	0.50/12.70	0.025/0.63
SH-IRD01-221K	220	0.240	1.6	0.50/12.70	0.025/0.63
SH-IRD01-271K	270	0.300	1.6	0.47/11.94	0.020/0.51
SH-IRD01-331K	330	0.336	1.3	0.47/11.94	0.020/0.51
SH-IRD01-391K	390	0.460	1.0	0.47/11.94	0.020/0.51
SH-IRD01-471K	470	0.636	0.8	0.47/11.94	0.020/0.51
SH-IRD01-561K	560	0.696	0.8	0.47/11.94	0.020/0.51

Note: 1. K =  $\pm 10\%$ , M =  $\pm 20\%$ , N =  $\pm 30\%$

# SH-IRD 02 SERIES THROUGH-HOLE RADIAL HIGH CURRENT POWER CHOKES



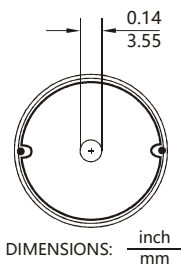
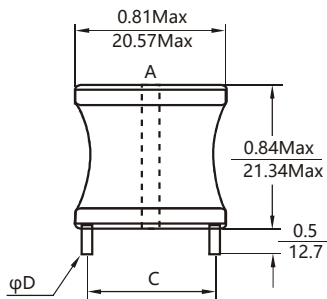
Additional information:

We reserve the right to make technical changes or modify the contents of this document without prior notice.

SHARE Ltd. Does not accept any responsibility what so ever for potential errors or possible lack of information in this document.

We can offer that even custom-made transformers will be covered by approvals from UL, CSA, KEMA, etc., but we will be happy to assist you in implementing them. New approvals may be required.

## STANDARD SPECIFICATIONS:



DIMENSIONS:  $\frac{\text{inch}}{\text{mm}}$



## FEATURES:

- High Saturation Material
- Polyolefin Shrink Tubing
- Low DC Resistance
- High Reliability Low cost
- Packaging: Tape & Reel is Standard  
Bulk packaging available for smaller quantities
- Tolerance: 10% is standard, tighter tolerances available.
- Switching Regulators
- RFI Suppression Filters
- SCR and TRIAC Controls
- Automotive Systems

## TECHNICAL INFORMATION:

- Inductance Testing: HP4284A, HP4285A or equivalent
- RDC: QuadTech 1880 Milliohm meter
- Q- HP4342A
- SRF- HP4191A or HP4194A
- Rated Current L value drop 10% typ. at I<sub>DC</sub> against its initial value
- Temperature rise 40°C Max Reference ambient temperature
- Solderability: 75% of the lead wire shall be covered
- Soldering Methods: Wave, Reflow
- Operating Temperature: -25°C to +85°C
- Storage Temperature: -55°C to +125°C
- Terminal bending strength: 24.5N Min
- Moisture resistance:  $\Delta L/L \leq \pm 10\%$   $\Delta Q/Q \leq \pm 25\%$

Note: All specifications subject to change without notice.

Part Number	L (μH) @1KHz	DCR (ΩMax)	IDC (A Max)	Dim(Inches/mm) C Approx.	Dim(Inches/mm) D Nom.
SH-IRD02-1R0M	1.0	0.003	11.4	0.63/16.00	0.072/1.83
SH-IRD02-1R2M	1.2	0.003	11.4	0.63/16.00	0.072/1.83
SH-IRD02-1R5M	1.5	0.003	11.4	0.63/16.00	0.072/1.83
SH-IRD02-1R8M	1.8	0.003	11.4	0.63/16.00	0.072/1.83
SH-IRD02-2R2M	2.2	0.004	11.4	0.63/16.00	0.072/1.83
SH-IRD02-2R7M	2.7	0.005	11.4	0.63/16.00	0.064/1.62
SH-IRD02-3R3M	3.3	0.005	11.4	0.63/16.00	0.064/1.62
SH-IRD02-3R9M	3.9	0.005	11.4	0.63/16.00	0.064/1.62
SH-IRD02-4R7M	4.7	0.005	11.4	0.63/16.00	0.064/1.62
SH-IRD02-5R6M	5.6	0.006	11.4	0.63/16.00	0.064/1.62
SH-IRD02-6R8M	6.8	0.007	11.4	0.63/16.00	0.064/1.62
SH-IRD02-8R2M	8.2	0.007	11.4	0.63/16.00	0.064/1.62
SH-IRD02-100K	10	0.009	11.4	0.63/16.00	0.064/1.62
SH-IRD02-120K	12	0.009	11.4	0.63/16.00	0.057/1.45
SH-IRD02-150K	15	0.013	9.0	0.63/16.00	0.057/1.45
SH-IRD02-180K	18	0.018	7.2	0.63/16.00	0.051/1.30
SH-IRD02-220K	22	0.019	7.2	0.63/16.00	0.051/1.30
SH-IRD02-270K	27	0.026	5.5	0.63/16.00	0.051/1.30
SH-IRD02-330K	33	0.029	5.5	0.60/15.24	0.045/1.14
SH-IRD02-390K	39	0.030	5.5	0.60/15.24	0.045/1.14
SH-IRD02-470K	47	0.035	5.5	0.62/15.74	0.045/1.14
SH-IRD02-560K	56	0.039	5.5	0.62/15.74	0.040/1.01
SH-IRD02-680K	68	0.053	4.8	0.62/15.74	0.040/1.01
SH-IRD02-820K	82	0.060	4.8	0.62/15.74	0.040/1.01
SH-IRD02-101K	100	0.080	4.0	0.62/15.74	0.036/0.91
SH-IRD02-121K	120	0.090	4.0	0.62/15.74	0.036/0.91
SH-IRD02-151K	150	0.098	4.0	0.62/15.74	0.032/0.81
SH-IRD02-181K	180	0.110	4.0	0.62/15.74	0.032/0.81
SH-IRD02-221K	220	0.150	2.8	0.62/15.74	0.032/0.81
SH-IRD02-271K	270	0.213	2.0	0.60/15.24	0.029/0.73
SH-IRD02-331K	330	0.305	1.6	0.60/15.24	0.029/0.73
SH-IRD02-391K	390	0.320	1.6	0.60/15.24	0.025/0.64
SH-IRD02-471K	470	0.355	1.6	0.60/15.24	0.025/0.64
SH-IRD02-561K	560	0.388	1.6	0.60/15.24	0.025/0.64
SH-IRD02-681K	680	0.430	1.6	0.60/15.24	0.025/0.64
SH-IRD02-821K	820	0.590	1.3	0.60/15.24	0.023/0.58
SH-IRD02-102K	1000	0.818	1.0	0.60/15.24	0.020/0.51
SH-IRD02-122K	1200	1.14	0.8	0.60/15.24	0.020/0.51
SH-IRD02-152K	1500	1.26	0.8	0.60/15.24	0.020/0.51
SH-IRD02-182K	1800	1.39	0.8	0.60/15.24	0.018/0.45
SH-IRD02-222K	2200	1.54	0.8	0.60/15.24	0.018/0.45

Note: 1. K=±10%, M=±20%, N=±30%

# SH-IRD 03 SERIES THROUGH-HOLE RADIAL HIGH CURRENT POWER CHOKES



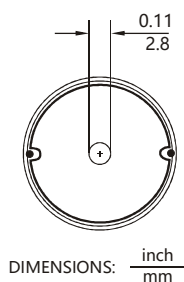
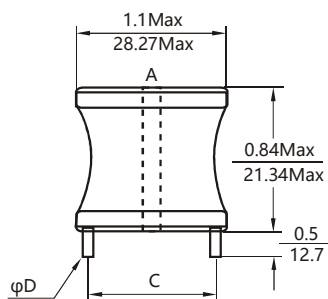
#### Additional information:

We reserve the right to make technical changes or modify the contents of this document without prior notice.

SHARE Ltd. Does not accept any responsibility what so ever for potential errors or possible lack of information in this document.

We can offer that even custom-made transformers will be covered by approvals from UL, CSA, KEMA, etc., but we will be happy to assist you in implementing them. New approvals may be required.

#### STANDARD SPECIFICATIONS:



#### FEATURES:

- High Saturation Material
- Polyolefin Shrink Tubing
- Low DC Resistance
- High Reliability Low cost
- Packaging: Tape & Reel is Standard Bulk packaging available for smaller quantities
- Tolerance:10% is standard, tighter tolerances available.
- Switching Regulators
- RFI Suppression Filters
- SCR and TRIAC Controls
- Automotive Systems

#### TECHNICAL INFORMATION:

- Inductance Testing: HP4284A, HP4285A or equivalent
- RDC: QuadTech 1880 Milliohm meter
- Q- HP4342A
- SRF-HP4191A or HP4194A
- Rated Current L value drop 10% typ. at I<sub>DC</sub> against its initial value
- Temperature rise 40°C Max Reference ambient temperature
- Solderability: 75% of the lead wire shall be covered
- Soldering Methods: Wave, Reflow
- Operating Temperature: -25°C to +85°C
- Storage Temperature: -55°C to +125°C
- Terminal bending strength: 24.5N Min
- Moisture resistance: ΔL/L ≤ ±10% ΔQ/Q ≤ ±25%

Note: All specifications subject to change without notice.

Part Number	L (μH) @1KHz	DCR (ΩMax)	IDC (A Max)	Dim(Inches/mm) C Approx.	Dim(Inches/mm) ΦD Nom.
SH-IRD03-1R0M	1.0	0.003	21	0.80/20.32	0.081/2.05
SH-IRD03-1R2M	1.2	0.003	21	0.80/20.32	0.081/2.05
SH-IRD03-1R5M	1.5	0.003	21	0.80/20.32	0.081/2.05
SH-IRD03-1R8M	1.8	0.003	21	0.80/20.32	0.081/2.05
SH-IRD03-2R2M	2.2	0.003	21	0.80/20.32	0.081/2.05
SH-IRD03-2R7M	2.7	0.003	21	0.80/20.32	0.081/2.05
SH-IRD03-3R3M	3.3	0.003	21	0.80/20.32	0.081/2.05
SH-IRD03-3R9M	3.9	0.003	21	0.80/20.32	0.081/2.05
SH-IRD03-4R7M	4.7	0.003	21	0.80/20.32	0.081/2.05
SH-IRD03-5R6M	5.6	0.003	21	0.82/20.82	0.081/2.05
SH-IRD03-6R8M	6.8	0.004	21	0.82/20.82	0.081/2.05
SH-IRD03-8R2M	8.2	0.004	21	0.82/20.82	0.081/2.05
SH-IRD03-100K	10	0.006	17	0.82/20.82	0.081/2.05
SH-IRD03-120K	12	0.008	13.5	0.80/20.32	0.072/1.82
SH-IRD03-150K	15	0.009	13.5	0.80/20.32	0.072/1.82
SH-IRD03-180K	18	0.010	13.5	0.80/20.32	0.072/1.82
SH-IRD03-220K	22	0.011	13.5	0.79/20.06	0.064/1.62
SH-IRD03-270K	27	0.012	13.5	0.79/20.06	0.064/1.62
SH-IRD03-330K	33	0.017	13.5	0.79/20.06	0.064/1.62
SH-IRD03-390K	39	0.022	11.4	0.79/20.06	0.057/1.44
SH-IRD03-470K	47	0.024	9.0	0.79/20.06	0.057/1.44
SH-IRD03-560K	56	0.026	9.0	0.79/20.06	0.057/1.44
SH-IRD03-680K	68	0.029	9.0	0.79/20.06	0.057/1.44
SH-IRD03-820K	82	0.032	9.0	0.79/20.06	0.051/1.37
SH-IRD03-101K	100	0.034	9.0	0.79/20.06	0.051/1.37
SH-IRD03-121K	120	0.046	7.2	0.79/20.06	0.051/1.37
SH-IRD03-151K	150	0.064	5.5	0.77/19.56	0.045/1.14
SH-IRD03-181K	180	0.072	5.5	0.77/19.56	0.045/1.14
SH-IRD03-221K	220	0.080	5.5	0.77/19.56	0.040/1.01
SH-IRD03-271K	270	0.110	4.5	0.77/19.56	0.040/1.01
SH-IRD03-331K	330	0.122	4.5	0.77/19.56	0.040/1.01
SH-IRD03-391K	390	0.169	4.0	0.77/19.56	0.036/0.91
SH-IRD03-471K	470	0.187	4.0	0.77/19.56	0.036/0.91
SH-IRD03-561K	560	0.205	4.0	0.77/19.56	0.032/0.81
SH-IRD03-681K	680	0.256	2.8	0.77/19.56	0.032/0.81
SH-IRD03-821K	820	0.288	2.8	0.77/19.56	0.032/0.81
SH-IRD03-102K	1000	0.426	2.0	0.75/19.05	0.029/0.73
SH-IRD03-122K	1200	0.426	2.0	0.75/19.05	0.029/0.73
SH-IRD03-152K	1500	0.518	2.0	0.75/19.05	0.025/0.64
SH-IRD03-182K	1800	0.705	1.6	0.75/19.05	0.025/0.64
SH-IRD03-222K	2200	1.02	1.3	0.75/19.05	0.025/0.64
SH-IRD03-272K	2700	1.14	1.3	0.75/19.05	0.023/0.58
SH-IRD03-332K	3300	1.27	1.3	0.75/19.05	0.020/0.51
SH-IRD03-392K	3900	1.67	1.0	0.75/19.05	0.020/0.51
SH-IRD03-472K	4700	1.86	1.0	0.75/19.05	0.020/0.51

Note: 1. K=±10%, M=±20%, N=±30%

# SH-IRD 04 SERIES THROUGH-HOLE RADIAL HIGH CURRENT POWER CHOKES



## TECHNICAL INFORMATION:

- Inductance Testing: HP4284A, HP4285A or equivalent
- RDC: QuadTech 1880 Milliohmmeter
- Q- HP4342A
- SRF-HP4191A or HP4194A
- Rated Current L value drop 10% typ. at I<sub>dc</sub> against its initial value
- Temperature rise 40°C Max Reference ambient temperature
- Solderability: 75% of the lead wire shall be covered
- Soldering Methods: Wave, Reflow
- Operating Temperature: -25°C to +85°C
- Storage Temperature: -55°C to +125°C
- Terminal bending strength: 24.5N Min
- Moisture resistance: ΔL/L ≤ ±10% ΔQ/Q ≤ ±25%

## FEATURES:

- High Saturation Material
- Polyolefin Shrink Tubing
- Low DC Resistance
- High Reliability Low cost
- Packaging: Tape & Reel is Standard
- Bulk packaging available for smaller quantities
- Tolerance: 10% is standard, tighter tolerances available.
- Switching Regulators
- RFI Suppression Filters
- SCR and TRIAC Controls
- Automotive Systems

Note: All specifications subject to change without notice.



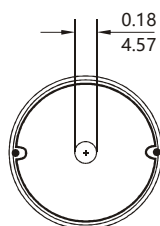
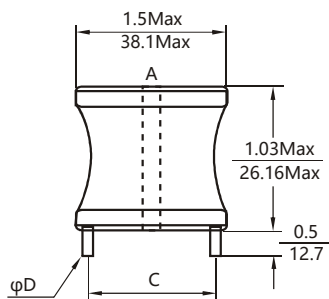
### Additional information:

We reserve the right to make technical changes or modify the contents of this document without prior notice.

SHARE Ltd. Does not accept any responsibility what so ever for potential errors or possible lack of information in this document.

We can offer that even custom-made transformers will be covered by approvals from UL, CSA, KEMA, etc., but we will be happy to assist you in implementing them. New approvals may be required.

## STANDARD SPECIFICATIONS:



DIMENSIONS:  $\frac{\text{inch}}{\text{mm}}$



Part Number	L (μH) @1KHz	DCR (ΩMax)	IDC (A Max)	Dim(Inches/mm) C Approx.	Dim(Inches/mm) D Nom.
SH-IRD04-1R8M	1.8	0.002	27	1.11/28.19	0.081/2.05
SH-IRD04-2R2M	2.2	0.002	27	1.11/28.19	0.081/2.05
SH-IRD04-2R7M	2.7	0.003	27	1.11/28.19	0.081/2.05
SH-IRD04-3R3M	3.3	0.003	27	1.11/28.19	0.081/2.05
SH-IRD04-3R9M	3.9	0.003	27	1.11/28.19	0.081/2.05
SH-IRD04-4R7M	4.7	0.003	27	1.11/28.19	0.081/2.05
SH-IRD04-5R6M	5.6	0.004	27	1.11/28.19	0.081/2.05
SH-IRD04-6R8M	6.8	0.004	27	1.15/29.21	0.081/2.05
SH-IRD04-8R2M	8.2	0.004	27	1.15/29.21	0.081/2.05
SH-IRD04-100K	10	0.005	27	1.15/29.21	0.081/2.05
SH-IRD04-120K	12	0.005	27	1.15/29.21	0.081/2.05
SH-IRD04-150K	15	0.006	27	1.15/29.21	0.081/2.05
SH-IRD04-180K	18	0.008	27	1.15/29.21	0.081/2.05
SH-IRD04-220K	22	0.009	21	1.15/29.21	0.081/2.05
SH-IRD04-270K	27	0.010	21	1.15/29.21	0.081/2.05
SH-IRD04-330K	33	0.011	21	1.15/29.21	0.072/1.82
SH-IRD04-390K	39	0.012	21	1.15/29.21	0.072/1.82
SH-IRD04-470K	47	0.018	14.4	1.15/29.21	0.072/1.82
SH-IRD04-560K	56	0.019	14.4	1.15/29.21	0.064/1.62
SH-IRD04-680K	68	0.021	14.4	1.15/29.21	0.064/1.62
SH-IRD04-820K	82	0.023	14.4	1.15/29.21	0.064/1.62
SH-IRD04-101K	100	0.025	14.4	1.15/29.21	0.064/1.62
SH-IRD04-121K	120	0.028	14.4	1.15/29.21	0.057/1.44
SH-IRD04-151K	150	0.040	14.4	1.15/29.21	0.057/1.44
SH-IRD04-181K	180	0.045	14.4	1.15/29.21	0.057/1.44
SH-IRD04-221K	220	0.050	14.4	1.15/29.21	0.051/1.37
SH-IRD04-271K	270	0.056	14.4	1.15/29.21	0.051/1.37
SH-IRD04-331K	330	0.074	14.4	1.15/29.21	0.051/1.37
SH-IRD04-391K	390	0.082	9.0	1.15/29.21	0.045/1.14
SH-IRD04-471K	470	0.114	7.2	1.15/29.21	0.045/1.14
SH-IRD04-561K	560	0.125	7.2	1.15/29.21	0.040/1.01
SH-IRD04-681K	680	0.139	7.2	1.15/29.21	0.040/1.01
SH-IRD04-821K	820	0.154	7.2	1.15/29.21	0.040/1.01
SH-IRD04-102K	1000	0.216	5.5	1.15/29.21	0.040/1.01
SH-IRD04-122K	1200	0.232	5.5	1.14/28.95	0.036/0.91
SH-IRD04-152K	1500	0.324	4.5	1.14/28.95	0.036/0.91
SH-IRD04-182K	1800	0.360	4.5	1.14/28.95	0.036/0.91
SH-IRD04-222K	2200	0.494	4.0	1.10/27.94	0.032/0.81
SH-IRD04-272K	2700	0.555	4.0	1.12/28.44	0.032/0.81
SH-IRD04-332K	3300	0.773	2.8	1.10/27.94	0.029/0.73
SH-IRD04-392K	3900	0.845	2.8	1.10/27.94	0.029/0.73
SH-IRD04-472K	4700	1.14	2.0	1.12/28.44	0.029/0.73
SH-IRD04-562K	5600	1.60	2.0	1.09/27.68	0.025/0.64
SH-IRD04-682K	6800	1.76	1.6	1.12/28.44	0.025/0.64
SH-IRD04-822K	8200	1.95	1.6	1.09/27.68	0.023/0.58
SH-IRD04-103K	10000	2.76	1.3	1.11/28.19	0.023/0.58
SH-IRD04-123K	12000	3.04	1.3	1.08/27.43	0.020/0.51
SH-IRD04-153K	15000	3.39	1.3	1.10/27.94	0.020/0.51

Note: 1. K=±10%, M=±20%, N=±30%

# SH-IRD 05 SERIES RADIAL LEADED POWER LINE CHOKES



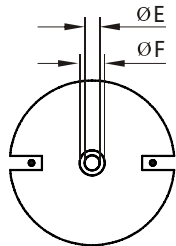
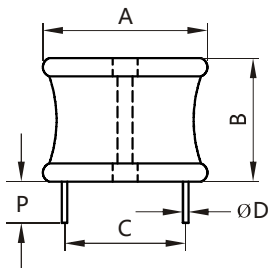
#### Additional information:

We reserve the right to make technical changes or modify the contents of this document without prior notice.

SHARE Ltd. Does not accept any responsibility what so ever for potential errors or possible lack of information in this document.

We can offer that even custom-made transformers will be covered by approvals from UL, CSA, KEMA, etc., but we will be happy to assist you in implementing them. New approvals may be required.

#### STANDARD SPECIFICATIONS:



DIMENSIONS: inches/mm

A	B	P(min)	ØE	ØF
1.60/40.64	1.45/36.83	0.50/12.7	0.10/2.54	0.25/6.35



#### FEATURES:

- High Saturation Material
- Polyolefin Shrink Tubing
- Low DC Resistance
- High Reliability Low cost
- Packaging: Tape & Reel is Standard Bulk packaging available for smaller quantities
- Tolerance: 10% is standard, tighter tolerances available.
- Switching Regulators
- RFI Suppression Filters
- SCR and TRIAC Controls
- Automotive Systems

#### TECHNICAL INFORMATION:

The AIRD-05,06,07,08,04A,06A,08A Series of Power Line Choke is available in 367 standard values covering a wide range of inductance and current. The use of high saturation flux density material make these coils ideal for use in switching regulated power supply applications and wherever high current choke values in a small physical size are needed.

- Inductance Testing: HP4284A, HP4285A or equivalent
  - RDC: QuadTech 1880 Milliohm meter
  - Q- HP4342A
  - SRF-HP4191A or HP4194A
  - Rated Current L value drop 10% typ. at I<sub>bc</sub> against its initial value
  - Temperature rise 40°C Max Reference ambient temperature
  - Solderability: 75% of the lead wire shall be covered
  - Soldering Methods: Wave, Reflow
  - Operating Temperature: -25°C to +85°C
  - Storage Temperature: -55°C to +125°C
  - Terminal bending strength: 24.5N Min
  - Moisture resistance: ΔL/L ≤ ±10% ΔQ/Q ≤ ±25%
- Note: All specifications subject to change without notice.

Part Number	L (μH) @1KHz	DCR (ΩMax)	IDC (A Max)	Dim C (Inches/mm) Approx.	Dim D (Inches/mm) Nom.
SH-IRD05-1R8M	1.8	0.002	35.0	1.11/28.194	0.105/2.667
SH-IRD05-2R2M	2.2	0.002	35.0	1.11/28.194	0.105/2.667
SH-IRD05-2R7M	2.7	0.002	35.0	1.11/28.194	0.105/2.667
SH-IRD05-3R3M	3.3	0.002	35.0	1.11/28.194	0.105/2.667
SH-IRD05-3R9M	3.9	0.003	35.0	1.11/28.194	0.105/2.667
SH-IRD05-4R7M	4.7	0.003	35.0	1.11/28.194	0.105/2.667
SH-IRD05-5R6M	5.6	0.003	35.0	1.11/28.194	0.105/2.667
SH-IRD05-6R8M	6.8	0.003	35.0	1.11/28.194	0.105/2.667
SH-IRD05-8R2M	8.2	0.003	35.0	1.11/28.194	0.105/2.667
SH-IRD05-100k	10.0	0.004	35.0	1.11/28.194	0.105/2.667
SH-IRD05-120K	12.0	0.004	35.0	1.16/29.464	0.105/2.667
SH-IRD05-150K	15.0	0.005	35.0	1.16/29.464	0.105/2.667
SH-IRD05-180K	18.0	0.007	27.0	1.16/29.464	0.094/2.3876
SH-IRD05-220K	22.0	0.007	27.0	1.16/29.464	0.094/2.3876
SH-IRD05-270K	27.0	0.008	27.0	1.16/29.464	0.094/2.3876
SH-IRD05-330K	33.0	0.009	27.0	1.16/29.464	0.094/2.3876
SH-IRD05-390K	39.0	0.010	27.0	1.16/29.464	0.094/2.3876
SH-IRD05-470K	47.0	0.011	27.0	1.16/29.464	0.094/2.3876
SH-IRD05-560K	56.0	0.013	21.0	1.16/29.464	0.094/2.3876
SH-IRD05-680K	68.0	0.015	21.0	1.25/31.750	0.84/2.1336
SH-IRD05-820K	82.0	0.017	21.0	1.28/32.512	0.84/2.1336
SH-IRD05-101K	100.0	0.018	21.0	1.25/31.750	0.84/2.1336
SH-IRD05-121K	120.0	0.022	17.0	1.16/29.464	0.075/1.9152
SH-IRD05-151K	150.0	0.025	17.0	1.16/29.464	0.075/1.9152
SH-IRD05-181K	180.0	0.035	13.5	1.10/27.94	0.068/1.7272
SH-IRD05-221K	220.0	0.040	13.5	1.10/27.94	0.068/1.7272
SH-IRD05-271K	270.0	0.044	13.5	1.10/27.94	0.068/1.7272
SH-IRD05-331K	330.0	0.049	13.5	1.11/28.194	0.068/1.7272
SH-IRD05-390K	390.0	0.070	11.4	1.15/29.21	0.060/1.524
SH-IRD05-471K	470.0	0.078	11.4	1.07/27.178	0.060/1.524
SH-IRD05-561K	560.0	0.105	9.0	1.07/27.178	0.054/1.3716
SH-IRD05-681K	680.0	0.115	9.0	1.07/27.178	0.054/1.3716
SH-IRD05-820K	820.0	0.127	9.0	1.12/28.448	0.054/1.3716
SH-IRD05-102K	1000.0	0.176	7.2	1.12/28.448	0.048/1.2192
SH-IRD05-122K	1200.0	0.195	7.2	1.12/28.448	0.048/1.2192
SH-IRD05-152K	1500.0	0.274	5.5	1.12/28.448	0.043/1.0922
SH-IRD05-182K	1800.0	0.302	5.5	1.13/28.702	0.043/1.0922
SH-IRD05-222K	2200.0	0.338	5.5	1.16/29.464	0.043/1.0922
SH-IRD05-272K	2700.0	0.459	4.5	1.02/25.908	0.039/0.9906
SH-IRD05-332K	3300.0	0.642	4.0	1.02/25.908	0.035/0.8890
SH-IRD05-392K	3900.0	0.699	4.0	1.14/28.956	0.035/0.8890
SH-IRD05-472K	4700.0	0.775	4.0	1.14/28.956	0.035/0.8890
SH-IRD05-562K	5600.0	0.843	4.0	1.14/28.956	0.035/0.8890
SH-IRD05-682K	6800.0	1.15	2.8	1.06/26.924	0.031/0.7874
SH-IRD05-822K	8200.0	1.26	2.8	1.16/29.464	0.031/0.7874
SH-IRD05-103K	10000.0	1.74	2.0	1.13/28.702	0.028/0.7112
SH-IRD05-123K	12000.0	1.92	2.0	1.13/28.702	0.028/0.7112
SH-IRD05-153K	15000.0	2.17	2.0	1.13/28.702	0.028/0.7112

Note: 1. K=±10%, M=±20%, N=±30%



# SH-IRD 06 SERIES RADIAL LEADED POWER LINE CHOKES

## TECHNICAL INFORMATION:

The AIRD-05,06,07,08,04A,06A,08A Series of Power Line Choke is available in 367 standard values covering a wide range of inductance and current. The use of high saturation flux density material make these coils ideal for use in switching regulated power supply applications and wherever high current choke values in a small physical size are needed.

- Inductance Testing: HP4284A, HP4285A or equivalent
  - RDC: QuadTech 1880 Milliohm meter
  - Q: HP4342A
  - SRF: HP4191A or HP4194A
  - Rated Current L value drop 10% typ. at I<sub>oc</sub> against its initial value
  - Temperature rise 40°C Max Reference ambient temperature
  - Solderability: 75% of the lead wire shall be covered
  - Soldering Methods: Wave, Reflow
  - Operating Temperature: -25°C to +85°C
  - Storage Temperature: -55°C to +125°C
  - Terminal bending strength: 24.5N Min
  - Moisture resistance: ΔL/L ≤ ±10% ΔQ/Q ≤ ±25%
- Note: All specifications subject to change without notice.



## FEATURES:

- High Saturation Material
- Polyolefin Shrink Tubing
- Low DC Resistance
- High Reliability Low cost
- Packaging: Tape & Reel is Standard Bulk packaging available for smaller quantities
- Tolerance: 10% is standard, tighter tolerances available.
- Switching Regulators
- RFI Suppression Filters
- SCR and TRIAC Controls
- Automotive Systems



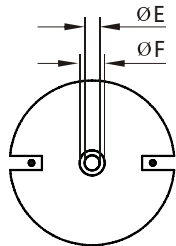
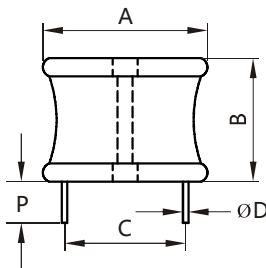
### Additional information:

We reserve the right to make technical changes or modify the contents of this document without prior notice.

SHARE Ltd. Does not accept any responsibility what so ever for potential errors or possible lack of information in this document.

We can offer that even custom-made transformers will be covered by approvals from UL, CSA, KEMA, etc., but we will be happy to assist you in implementing them. New approvals may be required.

## STANDARD SPECIFICATIONS:



DIMENSIONS: inches/mm

A	B	P(min)	E	F
2.00/50.80	1.50/38.10	0.50/12.70	0.10/2.54	0.25/6.35



Part Number	L (μH) @1KHz	DCR (ΩMax)	IDC (A Max)	Dim C (Inches/mm) Approx.	Dim D (Inches/mm) Nom.
SH-IRD06-4R7M	4.7	0.002	35.0	1.40/35.56	0.105/2.667
SH-IRD06-5R6M	5.6	0.002	35.0	1.40/35.56	0.105/2.667
SH-IRD06-6R8M	6.8	0.003	35.0	1.40/35.56	0.105/2.667
SH-IRD06-8R2M	8.2	0.003	35.0	1.40/35.56	0.105/2.667
SH-IRD06-100K	10.0	0.003	35.0	1.48/37.592	0.105/2.667
SH-IRD06-120K	12.0	0.004	35.0	1.48/37.592	0.105/2.667
SH-IRD06-150K	15.0	0.004	35.0	1.48/37.592	0.105/2.667
SH-IRD06-180K	18.0	0.005	35.0	1.48/37.592	0.105/2.667
SH-IRD06-220K	22.0	0.006	35.0	1.48/37.592	0.105/2.667
SH-IRD06-270K	27.0	0.006	35.0	1.48/37.592	0.105/2.667
SH-IRD06-330K	33.0	0.006	35.0	1.48/37.592	0.105/2.667
SH-IRD06-390K	39.0	0.008	35.0	1.48/37.592	0.105/2.667
SH-IRD06-470K	47.0	0.008	35.0	1.48/37.592	0.105/2.667
SH-IRD06-560K	56.0	0.009	35.0	1.48/37.592	0.105/2.667
SH-IRD06-680K	68.0	0.009	35.0	1.48/37.592	0.105/2.667
SH-IRD06-820K	82.0	0.010	35.0	1.48/37.592	0.105/2.667
SH-IRD06-101K	100.0	0.014	27.0	1.53/38.862	0.094/2.3876
SH-IRD06-121K	120.0	0.015	27.0	1.53/38.862	0.094/2.3876
SH-IRD06-151K	150.0	0.023	21.0	1.49/37.846	0.084/2.1336
SH-IRD06-181K	180.0	0.025	21.0	1.49/37.846	0.084/2.1336
SH-IRD06-221K	220.0	0.028	21.0	1.49/37.846	0.084/2.1336
SH-IRD06-271K	270.0	0.030	21.0	1.49/37.846	0.084/2.1336
SH-IRD06-331K	330.0	0.040	17.0	1.31/33.274	0.075/1.905
SH-IRD06-390K	390.0	0.055	13.5	1.31/33.274	0.068/1.7272
SH-IRD06-471K	470.0	0.061	13.5	1.31/33.274	0.068/1.7272
SH-IRD06-561K	560.0	0.068	13.5	1.40/35.560	0.068/1.7272
SH-IRD06-681K	680.0	0.094	11.4	1.42/36.068	0.060/1.524
SH-IRD06-820K	820.0	0.104	11.4	1.42/36.068	0.060/1.524
SH-IRD06-102K	1000.0	0.143	9.0	1.36/34.544	0.054/1.3716
SH-IRD06-122K	1200.0	0.156	9.0	1.36/34.544	0.054/1.3716
SH-IRD06-152K	1500.0	0.219	7.2	1.31/33.274	0.048/1.2192
SH-IRD06-182K	1800.0	0.241	7.2	1.31/33.274	0.048/1.2192
SH-IRD06-222K	2200.0	0.270	7.2	1.40/35.560	0.048/1.2192
SH-IRD06-272K	2700.0	0.364	5.5	1.36/34.544	0.043/1.0922
SH-IRD06-332K	3300.0	0.498	4.5	1.24/31.496	0.039/0.9906
SH-IRD06-392K	3900.0	0.548	4.5	1.32/33.528	0.039/0.9906
SH-IRD06-472K	4700.0	0.608	4.5	1.32/33.528	0.039/0.9906
SH-IRD06-562K	5600.0	0.671	4.5	1.36/34.544	0.039/0.9906
SH-IRD06-682K	6800.0	0.750	4.5	1.40/35.560	0.039/0.9906
SH-IRD06-822K	8200.0	1.030	4.0	1.45/36.830	0.035/0.8890
SH-IRD06-103K	10000.0	1.160	4.0	1.45/36.830	0.035/0.8890
SH-IRD06-123K	12000.0	1.540	2.8	1.40/35.560	0.031/0.7874
SH-IRD06-153K	15000.0	1.750	2.8	1.40/35.560	0.031/0.7874
SH-IRD06-183K	18000.0	1.940	2.8	1.45/36.830	0.028/0.7112
SH-IRD06-223K	22000.0	2.740	2.0	1.37/34.798	0.028/0.7112
SH-IRD06-273K	27000.0	3.710	1.7	1.37/34.798	0.025/0.6350
SH-IRD06-333K	33000.0	4.160	1.7	1.37/34.798	0.025/0.6350
SH-IRD06-393K	39000.0	5.560	1.4	1.35/34.290	0.025/0.6350
SH-IRD06-473K	47000.0	6.190	1.4	1.35/34.290	0.022/0.5588

Note: 1. K=±10%, M=±20%, N=±30%

# SH-IRD 07 SERIES RADIAL LEADED POWER LINE CHOKES

## TECHNICAL INFORMATION:

The AIRD-05,06,07,08,04A,06A,08A Series of Power Line Choke is available in 367 standard values covering a wide range of inductance and current. The use of high saturation flux density material make these coils ideal for use in switching regulated power supply applications and wherever high current choke values in a small physical size are needed.

- Inductance Testing: HP4284A, HP4285A or equivalent
  - RDC: QuadTech 1880 Milliohm meter
  - Q: HP4342A
  - SRF: HP4191A or HP4194A
  - Rated Current L value drop 10% typ. at  $I_{DC}$  against its initial value
  - Temperature rise 40°C Max Reference ambient temperature
  - Solderability: 75% of the lead wire shall be covered
  - Soldering Methods: Wave, Reflow
  - Operating Temperature: -25°C to +85°C
  - Storage Temperature: -55°C to +125°C
  - Terminal bending strength: 24.5N Min
  - Moisture resistance:  $\Delta L/L \leq \pm 10\%$   $\Delta Q/Q \leq \pm 25\%$
- Note: All specifications subject to change without notice.



## FEATURES:

- High Saturation Material
- Polyolefin Shrink Tubing
- Low DC Resistance
- High Reliability Low cost
- Packaging: Tape & Reel is Standard Bulk packaging available for smaller quantities
- Tolerance: 10% is standard, tighter tolerances available.
- Switching Regulators
- RFI Suppression Filters
- SCR and TRIAC Controls
- Automotive Systems



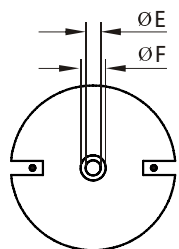
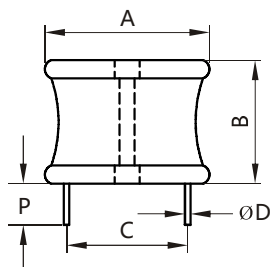
### Additional information:

We reserve the right to make technical changes or modify the contents of this document without prior notice.

SHARE Ltd. Does not accept any responsibility what so ever for potential errors or possible lack of information in this document.

We can offer that even custom-made transformers will be covered by approvals from UL, CSA, KEMA, etc., but we will be happy to assist you in implementing them. New approvals may be required.

## STANDARD SPECIFICATIONS:



DIMENSIONS: inches/mm

A	B	P(min)	E	F
2.40/60.96	1.50/38.10	0.50/12.70	0.10/2.54	0.25/6.35



Part Number	L (µH) @1KHz	DCR (ΩMax)	IDC (A Max)	Dim C (Inches/mm) Approx.	Dim D (Inches/mm) Nom.
SH-IRD07-5R6M	5.6	0.0018	45.0	1.60/40.64	0.120/3.048
SH-IRD07-6R8M	6.8	0.0021	45.0	1.60/40.64	0.120/3.048
SH-IRD07-8R2M	8.2	0.0022	45.0	1.60/40.64	0.120/3.048
SH-IRD07-100K	10.0	0.0024	45.0	1.60/40.64	0.120/3.048
SH-IRD07-120K	12.0	0.0025	45.0	1.60/40.64	0.120/3.048
SH-IRD07-150K	15.0	0.0028	42.0	1.70/43.18	0.120/3.048
SH-IRD07-180K	18.0	0.0032	40.0	1.70/43.18	0.120/3.048
SH-IRD07-220K	22.0	0.0036	38.0	1.70/43.18	0.120/3.048
SH-IRD07-270K	27.0	0.0042	38.0	1.70/43.18	0.120/3.048
SH-IRD07-330K	33.0	0.0045	37.0	1.70/43.18	0.120/3.048
SH-IRD07-390K	39.0	0.0048	36.0	1.80/45.72	0.120/3.048
SH-IRD07-470K	47.0	0.0057	35.0	1.80/45.72	0.120/3.048
SH-IRD07-560K	56.0	0.0069	35.0	1.80/45.72	0.120/3.048
SH-IRD07-680K	68.0	0.0078	35.0	1.80/45.72	0.120/3.048
SH-IRD07-820K	82.0	0.0093	35.0	1.80/45.72	0.120/3.048
SH-IRD07-101K	100.0	0.0103	27.0	1.80/45.72	0.120/3.048
SH-IRD07-121K	120.0	0.0108	27.0	1.80/45.72	0.120/3.048
SH-IRD07-151K	150.0	0.0120	25.0	1.80/45.72	0.120/3.048
SH-IRD07-181K	180.0	0.0156	22.0	1.80/45.72	0.120/3.048
SH-IRD07-221K	220.0	0.0168	22.0	1.80/45.72	0.105/2.667
SH-IRD07-271K	270.0	0.0228	21.0	1.80/45.72	0.105/2.667
SH-IRD07-331K	330.0	0.0300	17.0	1.80/45.72	0.094/2.3876
SH-IRD07-390K	390.0	0.0432	13.5	1.70/43.18	0.084/2.1336
SH-IRD07-471K	470.0	0.0456	13.5	1.70/43.18	0.075/1.9050
SH-IRD07-561K	560.0	0.0480	13.5	1.75/44.45	0.075/1.9050
SH-IRD07-681K	680.0	0.0516	12.0	1.80/45.72	0.075/1.9050
SH-IRD07-820K	820.0	0.0648	11.5	1.80/45.72	0.075/1.9050
SH-IRD07-102K	1000.0	0.0936	10.0	1.75/44.45	0.068/1.7272
SH-IRD07-122K	1200.0	0.1020	9.50	1.78/45.212	0.068/1.7272
SH-IRD07-152K	1500.0	0.1176	8.00	1.80/45.72	0.068/1.7272
SH-IRD07-182K	1800.0	0.1536	7.50	1.70/43.18	0.060/1.5240
SH-IRD07-222K	2200.0	0.2160	7.20	1.70/43.18	0.054/1.3716
SH-IRD07-272K	2700.0	0.2424	6.00	1.75/44.45	0.054/1.3716
SH-IRD07-332K	3300.0	0.2640	5.50	1.80/45.72	0.054/1.3716
SH-IRD07-392K	3900.0	0.3480	5.20	1.75/44.75	0.048/1.2192
SH-IRD07-472K	4700.0	0.3924	5.00	1.78/45.212	0.048/1.2192
SH-IRD07-562K	5600.0	0.4320	4.70	1.80/45.72	0.048/1.2192
SH-IRD07-682K	6800.0	0.5940	4.50	1.70/43.18	0.043/1.0922
SH-IRD07-822K	8200.0	0.6600	4.00	1.75/44.45	0.043/1.0922
SH-IRD07-103K	10000.0	0.7560	4.00	1.80/45.72	0.043/1.0922
SH-IRD07-123K	12000.0	0.9840	3.50	1.80/45.72	0.039/0.9986
SH-IRD07-153K	15000.0	1.4160	2.80	1.75/44.45	0.035/0.8890
SH-IRD07-183K	18000.0	1.5240	2.80	1.78/45.212	0.035/0.8890
SH-IRD07-223K	22000.0	1.8000	2.30	1.80/45.72	0.035/0.8890
SH-IRD07-273K	27000.0	2.3760	2.00	1.75/44.45	0.031/0.7874
SH-IRD07-333K	33000.0	2.6400	1.90	1.80/45.72	0.031/0.7874
SH-IRD07-393K	39000.0	3.5760	1.60	1.75/44.45	0.028/0.7112
SH-IRD07-473K	47000.0	3.9360	1.60	1.78/45.212	0.028/0.7112
SH-IRD07-563K	56000.0	4.3200	1.50	1.80/45.72	0.028/0.7112
SH-IRD07-683K	68000.0	5.2200	1.30	1.85/46.99	0.028/0.7112

Note: 1. K=±10%, M=±20%, N=±30%

# SH-IRD 08 SERIES RADIAL LEADED POWER LINE CHOKES

## TECHNICAL INFORMATION:

The AIRD-05,06,07,08,04A,06A,08A Series of Power Line Choke is available in 367 standard values covering a wide range of inductance and current. The use of high saturation flux density material make these coils ideal for use in switching regulated power supply applications and wherever high current choke values in a small physical size are needed.

- Inductance Testing: HP4284A, HP4285A or equivalent
  - RDC: QuadTech 1880 Milliohm meter
  - Q: HP4342A
  - SRF: HP4191A or HP4194A
  - Rated Current L value drop 10% typ. at I<sub>bc</sub> against its initial value
  - Temperature rise 40°C Max Reference ambient temperature
  - Solderability: 75% of the lead wire shall be covered
  - Soldering Methods: Wave, Reflow
  - Operating Temperature: -25°C to +85°C
  - Storage Temperature: -55°C to +125°C
  - Terminal bending strength: 24.5N Min
  - Moisture resistance: ΔL/L ≤ ±10% ΔQ/Q ≤ ±25%
- Note: All specifications subject to change without notice.



## FEATURES:

- High Saturation Material
- Polyolefin Shrink Tubing
- Low DC Resistance
- High Reliability Low cost
- Packaging: Tape & Reel is Standard Bulk packaging available for smaller quantities
- Tolerance: 10% is standard, tighter tolerances available.
- Switching Regulators
- RFI Suppression Filters
- SCR and TRIAC Controls
- Automotive Systems



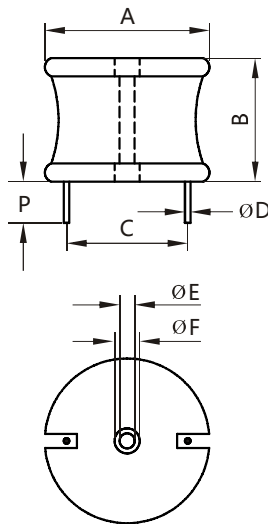
### Additional information:

We reserve the right to make technical changes or modify the contents of this document without prior notice.

SHARE Ltd. Does not accept any responsibility what so ever for potential errors or possible lack of information in this document.

We can offer that even custom-made transformers will be covered by approvals from UL, CSA, KEMA, etc., but we will be happy to assist you in implementing them. New approvals may be required.

## STANDARD SPECIFICATIONS:



DIMENSIONS: inches/mm

A	B	P(min)	E	F
2.40/60.96	1.50/38.10	0.50/12.70	0.10/2.54	0.25/6.35



Part Number	L (μH) @1KHz	DCR (ΩMax)	IDC (A Max)	Dim C (Inches/mm) Approx.	Dim D (Inches/mm) Nom.
SH-IRD08-5R6M	5.6	0.0012	55.0	*	0.225/5.7150
SH-IRD08-6R8M	6.8	0.0013	55.0	*	0.225/5.7150
SH-IRD08-8R2M	8.2	0.0015	55.0	*	0.225/5.7150
SH-IRD08-100K	10.0	0.0017	55.0	*	0.225/5.7150
SH-IRD08-120K	12.0	0.0020	55.0	*	0.225/5.7150
SH-IRD08-150K	15.0	0.0021	55.0	*	0.225/5.7150
SH-IRD08-180K	18.0	0.0023	55.0	*	0.225/5.7150
SH-IRD08-220K	22.0	0.0025	55.0	*	0.225/5.7150
SH-IRD08-270K	27.0	0.0026	55.0	*	0.225/5.7150
SH-IRD08-330K	33.0	0.0029	55.0	*	0.225/5.7150
SH-IRD08-390K	39.0	0.0033	55.0	*	0.225/5.7150
SH-IRD08-470K	47.0	0.0035	55.0	*	0.225/5.7150
SH-IRD08-560K	56.0	0.0039	55.0	*	0.225/5.7150
SH-IRD08-680K	68.0	0.0043	50.0	*	0.225/5.7150
SH-IRD08-820K	82.0	0.0048	45.0	*	0.210/5.3340
SH-IRD08-101K	100.0	0.0052	40.0	*	0.210/5.3340
SH-IRD08-121K	120.0	0.0071	39.0	*	0.210/5.3340
SH-IRD08-151K	150.0	0.0079	38.0	*	0.210/5.3340
SH-IRD08-181K	180.0	0.0087	37.0	*	0.210/5.3340
SH-IRD08-221K	220.0	0.0120	33.0	*	0.190/4.8260
SH-IRD08-271K	270.0	0.0140	30.0	*	0.190/4.8260
SH-IRD08-331K	330.0	0.0180	27.0	1.80/45.72	0.120/3.0480
SH-IRD08-390K	390.0	0.0200	25.0	1.70/43.18	0.120/3.0480
SH-IRD08-471K	470.0	0.0280	21.0	1.70/43.18	0.105/2.6670
SH-IRD08-561K	560.0	0.0310	20.0	1.45/44.45	0.105/2.6670
SH-IRD08-681K	680.0	0.034	19.0	1.80/45.72	0.105/2.667
SH-IRD08-820K	820.0	0.047	16.0	1.80/45.72	0.049/2.3876
SH-IRD08-102K	1000.0	0.052	15.5	1.75/44.45	0.049/2.3876
SH-IRD08-122K	1200.0	0.057	15	1.78/45.212	0.049/2.3876
SH-IRD08-152K	1500.0	0.080	13.0	1.80/45.72	0.084/2.1336
SH-IRD08-182K	1800.0	0.088	12.0	1.70/43.18	0.084/2.1336
SH-IRD08-222K	2200.0	0.122	10.0	1.70/43.18	0.075/1.905
SH-IRD08-272K	2700.0	0.135	10.0	1.75/44.45	0.075/1.905
SH-IRD08-332K	3300.0	0.188	8.0	1.80/45.72	0.068/1.7272
SH-IRD08-392K	3900.0	0.205	8.0	1.75/44.45	0.068/1.7272
SH-IRD08-472K	4700.0	0.283	6.7	1.78/45.212	0.060/1.5240
SH-IRD08-562K	5600.0	0.309	6.4	1.80/45.72	0.060/1.5240
SH-IRD08-682K	6800.0	0.431	5.4	1.70/43.18	0.054/1.3716
SH-IRD08-822K	8200.0	0.472	5.2	1.75/44.45	0.054/1.3716
SH-IRD08-103K	10000.0	0.521	5.0	1.80/45.72	0.054/1.3716
SH-IRD08-123K	12000.0	0.717	4.2	1.80/45.72	0.048/1.2192
SH-IRD08-153K	15000.0	0.803	4.0	1.75/44.45	0.048/1.2192
SH-IRD08-183K	18000.0	1.111	3.4	1.78/45.212	0.043/1.0922
SH-IRD08-223K	22000.0	1.228	3.2	1.80/45.72	0.043/1.0922
SH-IRD08-273K	27000.0	1.716	2.7	1.75/44.45	0.039/0.9906
SH-IRD08-333K	33000.0	1.896	2.6	1.80/45.72	0.039/0.9906
SH-IRD08-393K	39000.0	2.590	2.3	1.75/44.45	0.035/0.8890
SH-IRD08-473K	47000.0	2.840	2.2	1.78/45.212	0.035/0.8890
SH-IRD08-563K	56000.0	3.104	2.1	1.80/45.72	0.035/0.8890
SH-IRD08-683K	68000.0	4.331	1.7	1.85/46.99	0.031/0.7874
SH-IRD08-823K	82000.0	4.756	1.6	1.90/48.26	0.031/0.7874
SH-IRD08-104K	100000.0	6.652	1.4	1.95/49.53	0.028/0.7112

\* Inductors wound with 2 standards of wire. Consult Engineering for dimension.  
K=±10%, M=±20%

# SH-IRD 04A SERIES RADIAL LEADED POWER LINE CHOKES



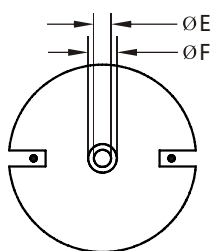
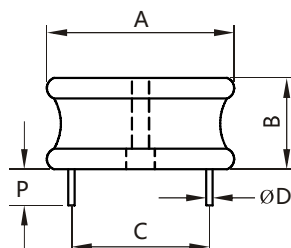
#### Additional information:

We reserve the right to make technical changes or modify the contents of this document without prior notice.

SHARE Ltd. Does not accept any responsibility what so ever for potential errors or possible lack of information in this document.

We can offer that even custom-made transformers will be covered by approvals from UL, CSA, KEMA, etc., but we will be happy to assist you in implementing them. New approvals may be required.

#### STANDARD SPECIFICATIONS:



DIMENSIONS: inches/mm

A	B	P(min)	E	F
1.60/40.64	0.68/17.27	0.50/12.70	0.25/6.35	0.29/7.366



#### FEATURES:

- High Saturation Material
- Polyolefin Shrink Tubing
- Low DC Resistance
- High Reliability Low cost
- Packaging: Tape & Reel is Standard Bulk packaging available for smaller quantities
- Tolerance:10% is standard, tighter tolerances available.
- Switching Regulators
- RFI Suppression Filters
- SCR and TRIAC Controls
- Automotive Systems

#### TECHNICAL INFORMATION:

The AIRD-05,06,07,08,04A,06A,08A Series of Power Line Choke is available in 367 standard values covering a wide rang of inductance and current. The use of high saturation flux density material make these coils ideal for use in switching regulated power supply applications and wherever high current choke values in a small physical size are needed.

- Inductance Testing: HP4284A,HP4285A or equivalent
  - RDC: QuadTech 1880 Milliohmometer
  - Q- HP4342A
  - SRF-HP4191A or HP4194A
  - Rated Current L value drop10%typ.at I<sub>DC</sub> against its initial value
  - Temperature rise 40°C Max Reference ambient temperature
  - Solderability: 75% of the lead wire shall be covered
  - Soldering Methods: Wave,Reflow
  - Operating Temperature:-25°C to +85°C
  - Storage Temperature: -55°C to +125°C
  - Terminal bending strength:24.5N Min
  - Moisture resistance:ΔL/L≤±10% ΔQ/Q≤±25%
- Note: All specifications subject to change without notice.

Part Number	L (μH) @1KHz	DCR (ΩMax)	IDC (A Max)	Dim C (Inches/mm) Approx.	Dim D (Inches/mm) Nom.
SH-IRD04A-2R2M	2.2	0.0028	28.2	1.10/27.94	0.094/2.3876
SH-IRD04A-3R9M	3.9	0.0037	27.2	1.10/27.94	0.094/2.3876
SH-IRD04A-4R7M	4.7	0.0040	25.7	1.10/27.94	0.094/2.3876
SH-IRD04A-6R8M	6.8	0.0048	23.7	1.10/27.94	0.094/2.3876
SH-IRD04A-8R2M	8.2	0.0055	22.0	1.16/29.46	0.094/2.3876
SH-IRD04A-120K	12.0	0.0067	20.7	1.16/29.46	0.084/2.1336
SH-IRD04A-150K	15.0	0.0070	20.5	1.16/29.46	0.084/2.1336
SH-IRD04A-180K	18.0	0.0094	20.5	1.16/29.46	0.084/2.1336
SH-IRD04A-220K	22.0	0.0103	20.4	1.18/29.97	0.084/2.1336
SH-IRD04A-270K	27.0	0.0121	18.9	1.18/29.97	0.084/2.1336
SH-IRD04A-330K	33.0	0.0163	14.0	1.17/29.72	0.068/1.7272
SH-IRD04A-390K	39.0	0.0173	13.6	1.17/29.72	0.068/1.7272
SH-IRD04A-470K	47.0	0.0196	12.8	1.17/29.72	0.068/1.7272
SH-IRD04A-560K	56.0	0.0208	12.4	1.18/29.97	0.068/1.7272
SH-IRD04A-680K	68.0	0.0292	10.7	1.17/29.72	0.060/1.5240
SH-IRD04A-820K	82.0	0.0319	10.2	1.18/29.97	0.060/1.5240
SH-IRD04A-101K	100.0	0.0348	9.8	1.18/29.97	0.060/1.5240
SH-IRD04A-121K	120.0	0.0480	8.3	1.18/29.97	0.048/1.2192
SH-IRD04A-151K	150	0.0530	7.90	1.18/29.97	0.048/1.219
SH-IRD04A-181K	180	0.0743	6.40	1.18/29.97	0.048/1.219
SH-IRD04A-221K	220	0.0833	6.00	1.19/30.23	0.043/1.092
SH-IRD04A-271K	270	0.0940	5.70	1.19/30.23	0.043/1.092
SH-IRD04A-331K	330	0.1270	4.80	1.12/28.48	0.039/0.991
SH-IRD04A-391K	390	0.1380	4.60	1.12/28.48	0.039/0.991
SH-IRD04A-471K	470	0.1840	4.10	1.12/28.48	0.039/0.991
SH-IRD04A-561K	560	0.2030	3.90	1.12/28.48	0.033/0.838
SH-IRD04A-681K	680	0.2790	3.20	1.12/28.48	0.033/0.838
SH-IRD04A-821K	820	0.3140	3.10	1.12/28.48	0.033/0.838
SH-IRD04A-102K	1000	0.3480	2.90	1.14/28.96	0.031/0.787
SH-IRD04A-122K	1200	0.4940	2.40	1.15/29.21	0.031/0.787
SH-IRD04A-152K	1500	0.5480	2.30	1.14/28.96	0.031/0.787
SH-IRD04A-182K	1800	0.7320	1.95	1.14/28.96	0.028/0.711
SH-IRD04A-222K	2200	0.8090	1.80	1.12/28.45	0.028/0.711
SH-IRD04A-272K	2700	1.1200	1.53	1.13/28.70	0.025/0.635
SH-IRD04A-332K	3300	1.8200	1.46	1.13/28.70	0.025/0.635
SH-IRD04A-392K	3900	1.3800	1.40	1.13/28.70	0.025/0.635

K=±10%,M=±20%

# SH-IRD 06A SERIES RADIAL LEADED POWER LINE CHOKES



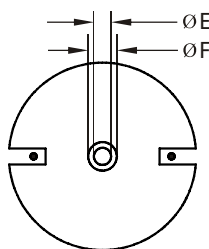
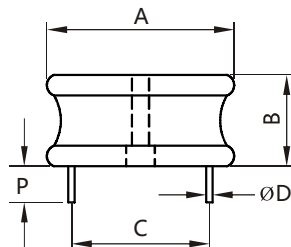
#### Additional information:

We reserve the right to make technical changes or modify the contents of this document without prior notice.

SHARE Ltd. Does not accept any responsibility what so ever for potential errors or possible lack of information in this document.

We can offer that even custom-made transformers will be covered by approvals from UL, CSA, KEMA, etc., but we will be happy to assist you in implementing them. New approvals may be required.

#### STANDARD SPECIFICATIONS:



DIMENSIONS: inches/mm

A	B	P(min)	E	F
2.00/50.80	0.74/18.80	0.50/12.70	0.25/6.35	0.375/9.525



#### FEATURES:

- High Saturation Material
- Polyolefin Shrink Tubing
- Low DC Resistance
- High Reliability Low cost
- Packaging: Tape & Reel is Standard Bulk packaging available for smaller quantities
- Tolerance:10% is standard, tighter tolerances available.
- Switching Regulators
- RFI Suppression Filters
- SCR and TRIAC Controls
- Automotive Systems

#### TECHNICAL INFORMATION:

The AIRD-05,06,07,08,04A,06A,08A Series of Power Line Choke is available in 367 standard values covering a wide rang of inductance and current. The use of high saturation flux density material make these coils ideal for use in switching regulated power supply applications and wherever high current choke values in a small physical size are needed.

- Inductance Testing: HP4284A,HP4285A or equivalent
  - RDC: QuadTech 1880 Milliohm meter
  - Q- HP4342A
  - SRF-HP4191A or HP4194A
  - Rated Current L value drop10%typ.at I<sub>bc</sub> against its initial value
  - Temperature rise 40°C Max Reference ambient temperature
  - Solderability: 75% of the lead wire shall be covered
  - Soldering Methods: Wave,Reflow
  - Operating Temperature:-25°C to +85°C
  - Storage Temperature: -55°C to +125°C
  - Terminal bending strength:24.5N Min
  - Moisture resistance:ΔL/L≤±10% ΔQ/Q≤±25%
- Note: All specifications subject to change without notice.

Part Number	L (μH) @1KHz	DCR (ΩMax)	IDC (A Max)	Dim C (Inches/mm) Approx.	Dim D (Inches/mm) Nom.
SH-IRD06A-2R2M	2.2	0.0021	34.7	1.21/30.73	0.105/2.667
SH-IRD06A-3R3M	3.3	0.0026	33.7	1.29/32.77	0.105/2.667
SH-IRD06A-5R6M	5.6	0.0036	31.0	1.29/32.77	0.105/2.667
SH-IRD06A-8R2M	8.2	0.0041	30.4	1.29/32.77	0.105/2.667
SH-IRD06A-120K	12.0	0.0047	29.6	1.37/34.80	0.105/2.667
SH-IRD06A-150K	15.0	0.0055	27.6	1.39/35.31	0.094/2.388
SH-IRD06A-180K	18.0	0.0062	25.9	1.37/34.80	0.094/2.388
SH-IRD06A-220K	22.0	0.0068	24.5	1.37/34.80	0.094/2.388
SH-IRD06A-270K	27.0	0.0077	23.3	1.37/34.80	0.094/2.388
SH-IRD06A-330K	33.0	0.0084	22.3	1.37/34.80	0.094/2.388
SH-IRD06A-390K	39.0	0.0112	18.4	1.17/29.72	0.084/2.134
SH-IRD06A-470K	47.0	0.0132	18.0	1.17/29.72	0.084/2.134
SH-IRD06A-560K	56.0	0.0142	17.5	1.44/36.58	0.075/1.915
SH-IRD06A-680K	68.0	0.0180	15.6	1.44/36.58	0.075/1.915
SH-IRD06A-820K	82.0	0.0202	14.8	1.43/36.32	0.075/1.915
SH-IRD06A-101K	100.0	0.0223	14.0	1.43/36.32	0.075/1.915
SH-IRD06A-121K	120.0	0.0324	11.7	1.44/36.58	0.060/1.524
SH-IRD06A-151K	150.0	0.0368	11.0	1.44/36.58	0.060/1.524
SH-IRD06A-181K	180.0	0.0468	9.5	1.44/36.58	0.054/1.372
SH-IRD06A-221K	220.0	0.0520	9.0	1.44/36.58	0.054/1.372
SH-IRD06A-271K	270	0.0587	8.50	1.46/37.08	0.054/1.372
SH-IRD06A-331K	330	0.0780	7.80	1.46/37.08	0.054/1.372
SH-IRD06A-391K	390	0.0844	7.50	1.45/36.83	0.048/1.219
SH-IRD06A-471K	470	0.1200	6.50	1.43/36.32	0.048/1.219
SH-IRD06A-561K	560	0.1310	6.20	1.44/36.58	0.048/1.219
SH-IRD06A-681K	680	0.1420	6.00	1.46/37.08	0.048/1.219
SH-IRD06A-821K	820	0.1870	4.90	1.45/36.83	0.043/1.092
SH-IRD06A-102K	1000	0.2060	4.70	1.45/36.83	0.043/1.092
SH-IRD06A-122K	1200	0.3010	3.85	1.45/36.83	0.035/0.889
SH-IRD06A-152K	1500	0.3530	3.74	1.46/37.08	0.035/0.889
SH-IRD06A-182K	1800	0.3830	3.43	1.46/37.08	0.035/0.889
SH-IRD06A-222K	2200	0.5480	2.90	1.45/36.83	0.031/0.787
SH-IRD06A-272K	2700	0.7930	2.28	1.46/37.08	0.031/0.787
SH-IRD06A-332K	3300	0.8740	2.15	1.45/36.83	0.031/0.787
SH-IRD06A-392K	3900	0.9480	2.08	1.46/37.08	0.031/0.787
SH-IRD06A-472K	4700	1.2400	2.00	1.46/37.08	0.028/0.711
SH-IRD06A-562K	5600	1.4000	1.88	1.46/37.08	0.028/0.711
SH-IRD06A-682K	6800	1.8400	1.80	1.46/37.08	0.028/0.711
SH-IRD06A-822K	8200	2.3800	1.50	1.47/37.34	0.028/0.711
SH-IRD06A-103K	10000	2.7500	1.40	1.47/37.34	0.028/0.711

K=±10%,M=±20%

# SH-IRD 07A SERIES RADIAL LEADED POWER LINE CHOKES

## TECHNICAL INFORMATION:

The AIRD-05,06,07,08,04A,06A,08A Series of Power Line Choke is available in 367 standard values covering a wide range of inductance and current. The use of high saturation flux density material make these coils ideal for use in switching regulated power supply applications and wherever high current choke values in a small physical size are needed.

- Inductance Testing: HP4284A, HP4285A or equivalent
  - RDC: QuadTech 1880 Milliohm meter
  - Q: HP4342A
  - SRF: HP4191A or HP4194A
  - Rated Current L value drop 10% typ. at I<sub>DC</sub> against its initial value
  - Temperature rise 40°C Max Reference ambient temperature
  - Solderability: 75% of the lead wire shall be covered
  - Soldering Methods: Wave, Reflow
  - Operating Temperature: -25°C to +85°C
  - Storage Temperature: -55°C to +125°C
  - Terminal bending strength: 24.5N Min
  - Moisture resistance:  $\Delta L/L \leq \pm 10\%$   $\Delta Q/Q \leq \pm 25\%$
- Note: All specifications subject to change without notice.



## FEATURES:

- High Saturation Material
- Polyolefin Shrink Tubing
- Low DC Resistance
- High Reliability Low cost
- Packaging: Tape & Reel is Standard Bulk packaging available for smaller quantities
- Tolerance: 10% is standard, tighter tolerances available.
- Switching Regulators
- RFI Suppression Filters
- SCR and TRIAC Controls
- Automotive Systems



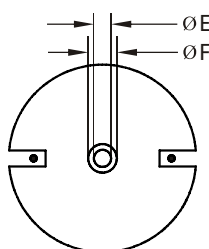
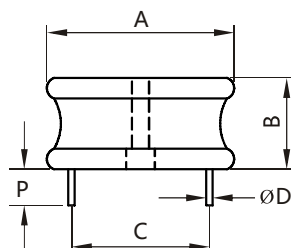
### Additional information:

We reserve the right to make technical changes or modify the contents of this document without prior notice.

SHARE Ltd. Does not accept any responsibility what so ever for potential errors or possible lack of information in this document.

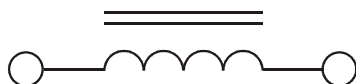
We can offer that even custom-made transformers will be covered by approvals from UL, CSA, KEMA, etc., but we will be happy to assist you in implementing them. New approvals may be required.

## STANDARD SPECIFICATIONS:



DIMENSIONS: inches/mm

A	B	P(min)	E	F
2.40/60.96	0.74/18.80	0.50/12.70	0.25/6.35	0.425/10.795



Part Number	L (µH) @1KHz	DCR (ΩMax)	IDC (A Max)	Dim C (Inches/mm) Approx.	Dim D (Inches/mm) Nom.
SH-IRD07A-1R0M	1.0	0.0018	44.0	1.52/38.61	0.120/3.048
SH-IRD07A-2R2M	2.2	0.0024	40.0	1.52/38.61	0.120/3.048
SH-IRD07A-4R7M	4.7	0.0030	36.0	1.60/40.64	0.109/2.769
SH-IRD07A-8R2M	8.2	0.0042	32.0	1.29/32.77	0.109/2.769
SH-IRD07A-120K	12.0	0.0053	30.0	1.64/41.66	0.109/2.769
SH-IRD07A-150K	15.0	0.0060	28.0	1.69/42.93	0.094/2.388
SH-IRD07A-180K	18.0	0.0067	27.0	1.77/44.96	0.094/2.388
SH-IRD07A-220K	22.0	0.0076	26.0	1.77/44.96	0.094/2.388
SH-IRD07A-270K	27.0	0.0085	24.0	1.77/44.96	0.094/2.388
SH-IRD07A-330K	33.0	0.0094	23.0	1.86/47.24	0.094/2.388
SH-IRD07A-390K	39.0	0.0130	20.0	1.86/47.24	0.084/2.134
SH-IRD07A-470K	47.0	0.0150	19.0	1.78/45.21	0.084/2.134
SH-IRD07A-560K	56.0	0.0160	18.0	1.88/47.75	0.084/2.134
SH-IRD07A-680K	68.0	0.0210	16.0	1.88/47.75	0.084/2.134
SH-IRD07A-820K	82.0	0.0240	14.0	1.82/46.23	0.084/2.134
SH-IRD07A-101K	100.0	0.0310	13.0	1.77/44.96	0.068/1.727
SH-IRD07A-121K	120.0	0.0350	12.0	1.87/47.50	0.068/1.727
SH-IRD07A-151K	150.0	0.0450	11.0	1.77/44.96	0.068/1.727
SH-IRD07A-181K	180.0	0.0550	9.5	1.83/46.48	0.054/1.372
SH-IRD07A-221K	220	0.076	8.0	1.75/44.45	0.054/1.372
SH-IRD07A-271K	270	0.084	8.0	1.80/45.72	0.054/1.372
SH-IRD07A-331K	330	0.093	7.5	1.80/45.72	0.048/1.219
SH-IRD07A-391K	390	0.127	6.5	1.80/45.72	0.048/1.219
SH-IRD07A-471K	470	0.138	6.0	1.80/45.72	0.048/1.219
SH-IRD07A-561K	560	0.192	5.0	1.80/45.75	0.043/1.092
SH-IRD07A-681K	680	0.210	5.0	1.76/44.70	0.043/1.092
SH-IRD07A-821K	820	0.287	4.0	1.69/42.93	0.039/0.991
SH-IRD07A-102K	1000	0.320	4.0	1.72/43.69	0.039/0.991
SH-IRD07A-122K	1200	0.349	3.8	1.76/44.70	0.039/0.991
SH-IRD07A-152K	1500	0.492	3.2	1.72/43.69	0.039/0.991
SH-IRD07A-182K	1800	0.544	3.0	1.75/44.45	0.031/0.787
SH-IRD07A-222K	2200	0.691	2.3	1.71/43.42	0.031/0.787
SH-IRD07A-272K	2700	0.764	2.2	1.77/44.96	0.031/0.787
SH-IRD07A-332K	3300	1.027	1.98	1.71/43.43	0.028/0.711
SH-IRD07A-392K	3900	1.113	1.90	1.70/43.18	0.028/0.711
SH-IRD07A-472K	4700	1.565	1.65	1.72/43.69	0.025/0.635
SH-IRD07A-562K	5600	1.700	1.58	1.72/43.69	0.025/0.635
SH-IRD07A-682K	6800	1.854	1.50	1.46/37.08	0.025/0.635

K=±10%, M=±20%

# SH-R SERIES HIGH CURRENT VERTICAL/HORIZONTAL TOROIDAL COILS



**Additional information:**

We reserve the right to make technical changes or modify the contents of this document without prior notice.

SHARE Ltd. Does not accept any responsibility what so ever for potential errors or possible lack of information in this document.

We can offer that even custom-made transformers will be covered by approvals from UL, CSA, KEMA, etc., but we will be happy to assist you in implementing them. New approvals may be required.

**FEATURES:**

- High saturation material
- Wide inductance range
- High current capability
- Long term stability
- High reliability
- Low DC resistance
- Packaging :Bulk is standard
- Tolerance:20% is standard, tighter tolerances available
- Mounting:(V)ertical is standard, (H)orizontal available
- Inductance :Optional request available
- Switching Regulators
- Automotive Systems
- Power Amplifiers
- Power Supplies
- SCR and Triac Controls
- Speaker Crossover Networks
- EMI/RFI suppression
- Filters

**TECHNICAL INFORMATION:**

- Testing: (Equivalent acceptable)
- Inductance:Measured at 1kHz 0.1V HP4284A
- RDC:QuadTech 1880 Milliohm meter
- IDC Max:Losers inductance by 10%
- Temperature range: -55°C to +125°C
- 55°C to +85°C at full rated current
- Mounting:Add(V),(H) as Suffix to Part Number

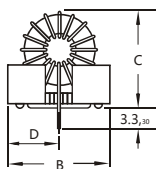
**Note:**

All specifications subject to change without notice.

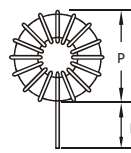
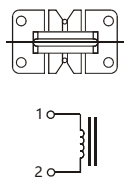
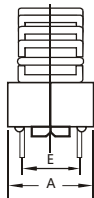
**STANDARD SPECIFICATIONS:**

Part Number	Inductance (μH)	I Rated (A)	Dia. (mm)	Width (mm)	Wire (AWG)	Klip Mount	Part Number	Inductance (μH)	I Rated (A)	Dia. (mm)	Width (mm)	Wire (AWG)	Klip Mount
SH-R30-100M	10	2.5	10.5	5.5	24	KM-1	SH-R80-250M	25	6.0	28.0	9.5	16	-
SH-R44-100M	10	3.0	14.2	8.5	20	KM-2	SH-R80-101M	100	5.0	25.0	12.0	18	KM-4
SH-R44-121M	120	1.1	14.2	7.5	23	KM-2	SH-R80-251M	250	3.0	25.0	12.0	20	-
SH-R44-102M	1000	.50	14.2	6.0	30	KM-2	SH-R80-961M	960	1.0	24.0	11.0	25	KM-4
SH-R50-5R0M	5.0	5.0	15.2	9.5	18	-	SH-R80-822M	8200	1.0	28.0	10.0	20	-
SH-R50-100M	10	3.0	16.5	8.5	18	KM-3	SH-R94-100M	10	5.0	27.9	12.7	17	KM-5
SH-R50-250M	25	2.5	13.5	6.5	23	KM-3	SH-R94-251M	250	5.0	29.0	10.0	18	KM-5
SH-R50-101M	100	2.0	15.5	8.5	22	KM-3	SH-R94-501M	500	6.0	29.0	15.5	16	KM-5
SH-R50-251M	250	1.0	16.0	8.0	24	KM-3	SH-R94-751M	750	4.5	30.5	12.7	19	KM-5
SH-R50-331M	330	1.0	16.5	9.0	26	-	SH-R94-102M	1000	4.0	29.2	15.0	20	KM-5
SH-R60-250M	25	2.5	17.7	8.8	24	KM-3	SH-R106-500M	50	7.0	33.0	16.0	15	-
SH-R67-500M	50	5.5	22.0	11.0	18	KM-4	SH-R106-101M	100	5.0	33.5	17.5	16	-
SH-R67-101M	100	5.0	21.0	13.0	18	KM-4	SH-R106-201M	200	3.0	32.0	14.0	22	-
SH-R67-100M	10	2.5	20.0	7.5	23	KM-4	SH-R106-471M	470	6.0	35.0	21.0	16	-
SH-R68-250M	25	6.0	20.8	8.2	18	KM-4	SH-R130-121M	120	10.0	42.0	21.0	12	-
SH-R68-500M	50	5.0	21.0	8.2	18	KM-4	SH-R130-251M	250	8.0	40.0	20.0	14	-
SH-R68-251M	250	3.0	22.0	10.0	19	-	SH-R130-561M	560	5.0	36.8	22.2	18	-
SH-R72-102M	1000	1.0	21.5	9.0	21	KM-4	SH-R141-100M	10	10.0	44.0	18.0	12	-
SH-R77-501M	500	2.0	23.7	11.0	22	-							

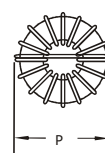
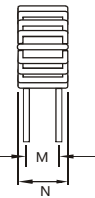
Please specify (V) for vertical or (H) for horizontal. (-)



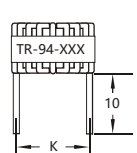
Standard Package



Vertical Package



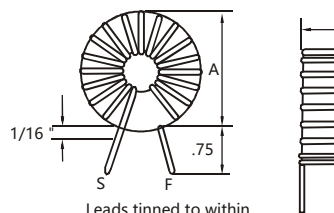
Low profile Package



Klip Mount	A Max	B Max	C Max	D Typical	E Typical
Km1	8.7	14.8	16.5	7.37	5.6
Km2	11.5	16.5	17.8	8.26	7.6
Km3	11.5	21.5	24.5	10.54	7.6
Km4	15.5	24.6	28.0	12.07	11.5
Km5	17.8	33.5	35.5	15.88	12.7

All dimension in mm

# SH-IMT-01 SERIES VERTICAL/HORIZONTAL TOROIDAL COILS



Leads tinned to within  
1/16" of core

### FEATURES:

- High saturation material
- Wide inductance range
- High current capability
- Long term stability
- High reliability
- Low DC resistance
- Packaging :Bulk is standard
- Tolerance:20% is standard, tighter tolerances available
- Mounting:(V)ertical is standard, (H)orizonta! available
- Inductance :Optional request available
- Switching Regulators
- Automotive Systems
- Power Amplifiers
- Power Supplies
- SCR and Triac Controls
- Speaker Crossover Networks
- EMI/RFI suppression
- Filters

### TECHNICAL INFORMATION:

- Testing: (Equivalent acceptable)
- Inductance:Measured at 1kHz 0.1V HP4284A
- RDC:QuadTech 1880 Milliohmmeter
- IDC Max:Losers inductance by 10%
- Temperature range: -55°C to +125°C
- 55°C to +85°C at full rated current
- Mounting:Add(V),(H) as Suffix to Part Number

### Note:

All specifications subject to change without notice.



### Additional information:

We reserve the right to make technical changes or modify the contents of this document without prior notice.

SHARE Ltd. Does not accept any responsibility what so ever for potential errors or possible lack of information in this document.

We can offer that even custom-made transformers will be covered by approvals from UL, CSA, KEMA, etc., but we will be happy to assist you in implementing them. New approvals may be required.

### STANDARD SPECIFICATIONS:

Part Number	L μH	IDC Max A	RDC Ω Max	Din E
SH-IMT-01-50M	5.0	.50	.007	7.5×4.5
SH-IMT-01-80M	8.0	2.0	.017	14.5×7.0
SH-IMT-01-100M	10.0	2.0	13.0	12.0×7.0
SH-IMT-01-150M	15.0	2.0	.023	15.5×7.5
SH-IMT-01-200M	20.0	3.0	.021	17.5×9.0
SH-IMT-01-240M	24.0	1.0	.055	13.5×6.0
SH-IMT-01-250M	25.0	5.0	.016	24.0×10.5
SH-IMT-01-290M	29.0	4.0	.020	21.0×11.0
SH-IMT-01-300M-2(A)	30.0	2.0	.035	17.0×8.5
SH-IMT-01-300M-10(A)	30.0	10.0	.009	36.0×19.5
SH-IMT-01-350M-3(A)	35.0	3.0	.026	20.5×10.5
SH-IMT-01-350M-10(A)	35.0	10.0	.010	36.0×19.5
SH-IMT-01-430M-1(A)	43.0	1.0	.074	14.5×7.0
SH-IMT-01-430M-3(A)	43.0	3.0	.030	23.0×9.5
SH-IMT-01-500M	50.0	5.0	.022	26.5×12.5
SH-IMT-01-600M	60.0	3.0	.038	18.0×10.0
SH-IMT-01-680M-1(A)	68.0	1.0	.095	13.5×6.5
SH-IMT-01-680M-7(A)	68.0	7.0	.021	34.0×18.0
SH-IMT-01-750M-3(A)	75.0	3.0	.039	25.5×11.0
SH-IMT-01-750M-10(A)	75.0	10.0	.014	42.0×19.5
SH-IMT-01-820M-3(A)	82.0	3.0	.042	24.5×10.5
SH-IMT-01-820M-5(A)	82.0	5.0	.033	31.5×15.5
SH-IMT-01-820M-7(A)	82.0	7.0	.023	34.5×18.0
SH-IMT-01-900M-3(A)	90.0	3.0	.044	20.5×12.5
SH-IMT-01-900M-5(A)	90.0	5.0	.034	29.5×15.5
SH-IMT-01-101M-2.5(A)	100.0	2.0	.081	17.0×9.0
SH-IMT-01-101M-5(A)	100.0	5.0	.033	26.5×12.5
SH-IMT-01-101M-5(A)	100.0	5.0	.036	33.5×17.0

Part Number	L μH	IDC Max A	RDC Ω Max	Din E
SH-IMT-01-111M-2(A)	110.0	2.0	.069	19.5×10.0
SH-IMT-01-111M-2(A)	110.0	2.0	.074	25.0×10.0
SH-IMT-01-111M-4(A)	110.0	4.0	.042	23.5×11.0
SH-IMT-01-131M-1(A)	130.0	1.0	.146	19.0×9.0
SH-IMT-01-131M-3(A)	130.0	3.0	.055	23.0×10.5
SH-IMT-01-131M-3(A)	130.0	3.0	.061	29.0×13.0
SH-IMT-01-131M-7(A)	130.0	7.0	.031	41.0×18.0
SH-IMT-01-141M-1(A)	140.0	1.0	.140	15.0×7.5
SH-IMT-01-141M-3(A)	140.0	3.0	.064	28.0×14.5
SH-IMT-01-151M-1(A)	150.0	1.0	.159	21.5×7.5
SH-IMT-01-151M-4(A)	150.0	4.0	.053	32.5×16.5
SH-IMT-01-151M-5(A)	150.0	5.0	.042	27.0×13.5
SH-IMT-01-201M-2(A)	200.0	2.0	.114	28.0×14.0
SH-IMT-01-201M-3(A)	200.0	3.0	.078	31.0×16.0
SH-IMT-01-201M-5(A)	200.0	5.0	.056	39.0×17.0
SH-IMT-01-221M-1(A)	220.0	1.0	.190	16.5×8.0
SH-IMT-01-221M-4(A)	220.0	4.0	.059	26.5×13.0
SH-IMT-01-251M	250.0	10.0	.027	42.5×21.5
SH-IMT-01-271M	270.0	3.0	.081	26.0×12.0
SH-IMT-01-301M	300.0	3.0	.142	31.5×15.5
SH-IMT-01-301M	300.0	2.0	.064	30.0×15.5
SH-IMT-01-391M	390.0	5.0	.088	29.5×15.0
SH-IMT-01-451M	450.0	4.0	.174	28.0×14.0
SH-IMT-01-501M	500.0	2.0	.124	29.0×14.0
SH-IMT-01-681M	680.0	3.0	.105	39.0×18.5
SH-IMT-01-781M	780.0	5.0	.225	28.5×13.5
SH-IMT-01-851M	850.0	2.0	.211	32.5×16.5
SH-IMT-01-961M	960.0	2.0	.438	25.0×11.0



# SH-IGT-10 SERIES VERTICAL/BASE MOUNT TOROIDAL COILS



**Additional information:**

We reserve the right to make technical changes or modify the contents of this document without prior notice.

SHARE Ltd. Does not accept any responsibility what so ever for potential errors or possible lack of information in this document.

We can offer that even custom-made transformers will be covered by approvals from UL, CSA, KEMA, etc., but we will be happy to assist you in implementing them. New approvals may be required.

**FEATURES:**

- High saturation material
- Wide inductance range
- High current capability
- Long term stability
- High reliability
- Low DC resistance
  
- Packaging :Bulk is standard
- Tolerance:20% is standard, tighter tolerances available
- Mounting:(V)ertical is standard, (H)orizontatl available
- Inductance :Optional request available
  
- Switching Regulators
- Automotive Systems
- Power Amplifiers
- Power Supplies
- SCR and Triac Controls
- Speaker Crossover Networks
- EMI/RFI suppression
- Filters

**TECHNICAL INFORMATION:**

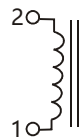
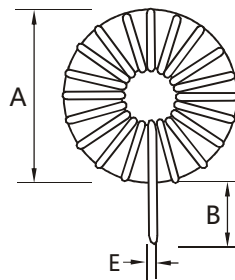
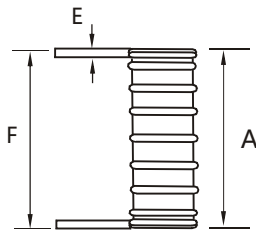
- Testing: (Equivalent acceptable)
- Inductance:Measured at 1kHz 0.1V HP4284A
- RDC:QuadTech 1880 Milliohmmer
- IDC Max:Losers inductance by 10%
- Temperature range: -55°C to +125°C
- 55°C to +85°C at full rated current
- Mounting:Add(V),(H) as Suffix to Part Number

**Note:**

All specifications subject to change without notice.

**STANDARD SPECIFICATIONS:**

Part Number	L μH	IDC Max A	RDC Ω Max	Lead Dia	L ±0.75	P Max	N Max	A ±0.10	B ±0.10	C Max	D Typical	E Typical	F Typical
SH-IGT-10-5R0M	5	2.5	.03	.020	.425	.550	.250	.340	.580	.640	.290	.110	.25
SH-IGT-10-250M	25	2.5	.04	.020	.425	.550	.250	.340	.580	.640	.290	.110	.25
SH-IGT-10-500M	50	2.5	.07	.020	.425	.640	.330	.450	.650	.730	.325	.150	.25
SH-IGT-10-101M	100	2.5	.10	.020	.425	.840	.340	.450	.830	.940	.415	.150	.25
SH-IGT-10-350M	35	2.5	.04	.025	.425	.640	.340	.450	.650	.730	.325	.150	.25
SH-IGT-10-700M	70	3.0	.05	.025	.425	.860	.360	.450	.830	.960	.415	.150	.25
SH-IGT-10-14.51M	145	3.0	.09	.025	.425	.970	.470	.600	.950	1.060	.475	.225	.25
SH-IGT-10-28.51M	285	3.0	.14	.025	.925	1.210	.550	.700	1.250	1.300	.625	.250	.25
SH-IGT-10-451M	450	3.0	.20	.025	.925	1.490	.580	-	-	-	-	-	-
SH-IGT-10-101M	100	3.5	.04	.032	.425	.950	.500	.600	.950	1.060	.475	.225	.25
SH-IGT-10-16.51M	165	4.0	.07	.032	.925	1.230	.560	.700	1.250	1.330	.625	.250	.25
SH-IGT-10-271M	270	4.0	.10	.032	.925	1.530	.590	-	-	-	-	-	-
SH-IGT-10-400M	40	4.0	.03	.032	.425	.840	.380	.450	.830	.940	.415	.150	.25
SH-IGT-10-101M	100	5.0	.04	.042	.925	1.240	.600	.700	1.250	1.370	.625	.250	.25
SH-IGT-10-171M	170	5.0	.05	.042	.925	1.480	.600	-	-	-	-	-	-
SH-IGT-10-550M	55	5.0	.02	.042	.425	1.00	.510	.600	.950	1.070	.475	.225	.25
SH-IGT-10-950M	95	7.0	.03	.051	.925	1.510	.620	-	-	-	-	-	-0
SH-IGT-10-550M-7(A)	55	7.0	.02	.051	.925	1.300	.610	.700	1.250	1.440	.625	.250	.25
SH-IGT-10-550M-10(A)	55	10.0	.02	.064	.925	1.540	.650	-	-	-	-	-	-
SH-IGT-10-251M	250	10.0	.20	.020	.425	.840	.340	.450	.830	.960	.415	.150	.25



# SH-IGT-20 SERIES VERTICAL/HORIZONTAL /BASE MOUNT TOROIDAL COILS



Additional information:

We reserve the right to make technical changes or modify the contents of this document without prior notice.

SHARE Ltd. Does not accept any responsibility what so ever for potential errors or possible lack of information in this document.

We can offer that even custom-made transformers will be covered by approvals from UL, CSA, KEMA, etc., but we will be happy to assist you in implementing them. New approvals may be required.

## FEATURES:

- High saturation material
- Wide inductance range
- High current capability
- Long term stability
- High reliability
- Low DC resistance
- Packaging :Bulk is standard
- Tolerance:20% is standard, tighter tolerances available
- Mounting:(V)ertical is standard, (H)orizontal available
- Inductance :Optional request available
- Switching Regulators
- Automotive Systems
- Power Amplifiers
- Power Supplies
- SCR and Triac Controls
- Speaker Crossover Networks
- EMI/RFI suppression
- Filters

## TECHNICAL INFORMATION:

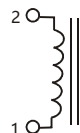
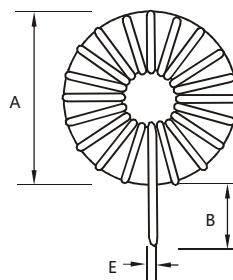
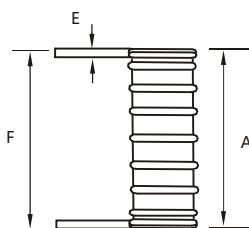
- Testing: (Equivalent acceptable)
- Inductance:Measured at 1kHz 0.1V HP4284A
- RDC:QuadTech 1880 Milliohmmeter
- IDC Max:Losers inductance by 10%
- Temperature range: -55°C to +125°C
- 55°C to +85°C at full rated current
- Mounting:Add (V),(H) as Suffix to Part Number

Note:

All specifications subject to change without notice.

## STANDARD SPECIFICATIONS:

Part Number	L μH	IDC Max A	RDC Ω Max	A Max	B Typical	C Ref	D Typical	E Typical	F Typical
SH-IGT-20-200M-1 (A)	20	1.0	.062	.350	.500	.220	.250	.013	.325
SH-IGT-20-200M-2 (A)	20	2.0	.029	.500	.500	.240	.300	.020	.460
SH-IGT-20-200M-5 (A)	20	5.0	.020	.940	.500	.570	.640	.032	.876
SH-IGT-20-500M-1 (A)	50	1.0	.061	.600	.500	.300	.340	.020	.560
SH-IGT-20-500M-2 (A)	50	2.0	.025	.850	.500	.450	.500	.032	.786
SH-IGT-20-500M-5 (A)	50	5.0	.021	1.250	.500	.675	.750	.040	1.210
SH-IGT-20-500M-7 (A)	50	7.0	.013	1.500	.500	.575	.650	.051	1.398
SH-IGT-20-500M-10 (A)	50	10.0	.016	1.800	.500	.700	.775	.051	1.698
SH-IGT-20-101M-1 (A)	100	1.0	.085	.620	.500	.425	.475	.020	.580
SH-IGT-20-101M-2 (A)	100	2.0	.040	.950	.500	.600	.640	.032	.886
SH-IGT-20-101M-5 (A)	100	5.0	.028	1.500	.500	.575	.629	.040	1.420
SH-IGT-20-151M-5 (A)	150	5.0	.042	1.750	.500	.680	.750	.040	1.670
SH-IGT-20-251M-1 (A)	250	1.0	.168	.800	.500	.450	.475	.018	.764
SH-IGT-20-251M-2 (A)	250	2.0	.070	1.250	.500	.675	.725	.032	1.186
SH-IGT-20-501M-1 (A)	500	1.0	.276	.925	.500	.570	.600	.018	.889
SH-IGT-20-501M-2 (A)	500	2.0	.147	1.450	.500	.550	.575	.025	1.400



Dimensions:Inches

# SH-CHA SERIES 01,02,03,04,05 THROUGH-HOLE AXIAL HASH CHOKES



**Additional information:**

We reserve the right to make technical changes or modify the contents of this document without prior notice.

SHARE Ltd. Does not accept any responsibility what so ever for potential errors or possible lack of information in this document.

We can offer that even custom-made transformers will be covered by approvals from UL, CSA, KEMA, etc., but we will be happy to assist you in implementing them. New approvals may be required.

**FEATURES:**

- Wire-wound Construction
- Narrow Design for Densely Populated Boards
- Wide Range of Inductance Values
- Excellent Q Values
- High Reliability

- Packaging is Standard
- Tolerance:20%is Standard, Tighter Tolerances Available
- UL approved Polyolefin shrink tubing

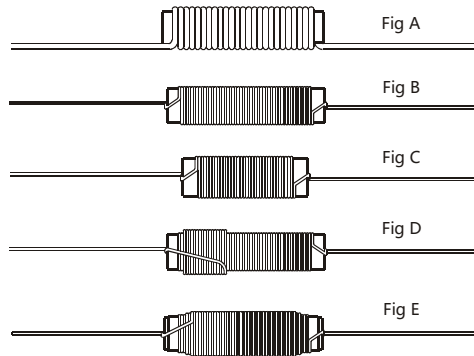
- Power supplies
- Amplifiers
- Oscilloscopes
- Medical Equipment
- Converters
- Analyzers

**TECHNICAL INFORMATION:**

- Testing: (Equivalent acceptable) HP4284A @1kHz 0.1V
- RDC:QuadTech 1880 Milliohmmeter
- IDC Max:Lowers inductance by 10%
- Operating temperature: -55°C to +105°C
- Storage Temperature: -40°C to +85°C
- Optional Shrink tube: Flame retardant UL type VW-1
- Marking: Inductance and Tolerance on optional tubing only

Note:  
All specifications subject to change without notice..

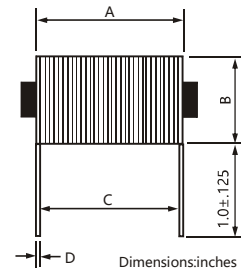
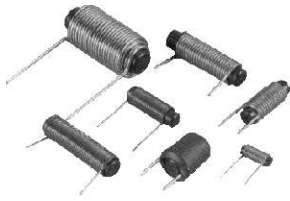
**STANDARD SPECIFICATIONS:**



Part Number	L $\mu$ H	Tol %	DCR $\Omega$ Max	IDC Max A	Coil Diameter Inches max	Lead Wire Size	Lead Length in.Inches	Bofy Length Max Inches	Refer to Figure #	Core Material
SH-CHA-01-3R3M	3.35	$\pm$ 20	0.01	20	.60	12AWG	1.25	1.25	A	IRON
SH-CHA-01-4R9M	4.9	$\pm$ 20	.016	15	.60	14AWG	1.25	1.25	A	IRON
SH-CHA-01-8R8M	8.8	$\pm$ 20	.021	10	.56	16AWG	1.25	1.25	A	IRON
SH-CHA-02-4R0M	4.0	$\pm$ 20	.012	8.0	.38	20AWG	1.25	1.25	B	FERRITE
SH-CHA-03-400M	40	$\pm$ 20	.082	3.0	.31	20AWG	1.25	1.25	C	FERRITE
SH-CHA-04-680M	68	$\pm$ 20	.054	5.0	.56	20AWG	1.25	1.25	D	FERRITE
SH-CHA-05-101M	100	$\pm$ 20	.216	2.0	.38	20AWG	1.25	1.25	E	FERRITE
SH-CHA-04-125M	125	$\pm$ 20	.080	3.5	.50	20AWG	1.25	1.25	D	FERRITE
SH-CHA-04-251M	250	$\pm$ 20	.170	2.5	.44	20AWG	1.25	1.25	D	FERRITE
SH-CHA-04-501M	500	$\pm$ 20	.260	2.0	.44	20AWG	1.25	1.25	D	FERRITE
SH-CHA-04-102M	1000	$\pm$ 20	.550	1.0	.50	20AWG	1.25	1.25	D	FERRITE

Note:1. K= $\pm$ 10%,M= $\pm$ 20%

# SH-RC SERIES 03,05,10,15 THROUGH-HOLE HORIZONTAL HASH CHOKES



#### Additional information:

We reserve the right to make technical changes or modify the contents of this document without prior notice.

SHARE Ltd. Does not accept any responsibility what so ever for potential errors or possible lack of information in this document.

We can offer that even custom-made transformers will be covered by approvals from UL, CSA, KEMA, etc., but we will be happy to assist you in implementing them. New approvals may be required.

#### FEATURES:

- High current rating
- Low DC resistance
- Pre-tinned Leads
- Polyolefin shrink tubing
- Excellent Stability
- High Reliability
- Packaging: Bulk is standard
- Tolerance: 10% is standard tighter tolerances available
- Noise Filtering
- Amplifiers
- Switching Regulators
- Power Supplies
- Triac Control Circuits
- SCR Control Circuits

#### TECHNICAL INFORMATION:

- Testing: (Equivalent acceptable)
- Inductance:  
Measured at 1kHz with 0.1V zero DC current on LCR meter HP 4284A  
RDC: QuadTech 1880 Milliohmmeter
- IDC Max Amps:  
The typical current at which the inductance will decrease 5% from its initial value
- Temperature range: -55°C to +125°C with no load  
-55°C to +85°C at full rated current
- Marking:  
Inductance and tolerance
- Marking:  
Inductance and Tolerance on optional tubing only

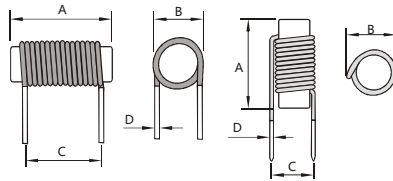
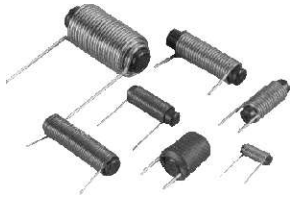
Note:  
All specifications subject to change without notice.

#### STANDARD SPECIFICATIONS:

Part Number	L μH	Tol %	DCR Ω Max	Rated Amps	IDC Max Amps	A (MAX)	B (MAX)	C (MAX)	D (MAX)
SH-RC-03-50K	5	±10	.015	10.0	25	.875	.600	.500	.042
SH-RC-03-100K	10	±10	.018	9.0	19	1.125	.625	.687	.042
SH-RC-03-270K	27	±10	.035	7.0	12	.875	.800	.437	.042
SH-RC-03-500K	50	±10	.050	5.6	8	.875	.800	.750	.042
SH-RC-03-101K	100	±10	.065	5.2	6	1.125	.800	.937	.042
SH-RC-03-151K	150	±10	.075	5.0	5	1.375	.800	1.062	.042
SH-RC-03-251K	250	±10	.090	5.0	4	1.625	.800	1.312	.042
SH-RC-05-50K	5	±10	.012	14.0	25	.875	.625	.750	.053
SH-RC-05-100K	10	±10	.015	12.0	19	1.125	.625	1.0	.053
SH-RC-05-270K	27	±10	.025	9.0	13	.875	.840	.562	.053
SH-RC-05-500K	50	±10	.030	8.0	10	1.125	.840	.750	.053
SH-RC-05-680K	68	±10	.035	7.5	9	1.125	.860	.875	.053
SH-RC-05-101K	100	±10	.050	7.5	7	1.375	.860	1.0	.053
SH-RC-05-151K	150	±10	.060	7.0	5	1.625	.860	1.250	.053
SH-RC-10-50K	5	±10	.010	19.0	25	1.125	.635	.812	.065
SH-RC-10-100K	10	±10	.012	16.0	19	1.375	.635	1.218	.065
SH-RC-10-270K	27	±10	.018	12.5	12	1.125	.935	.687	.065
SH-RC-10-500K	50	±10	.025	11.0	10	1.375	.935	.937	.065
SH-RC-10-680K	68	±10	.027	10.0	8	1.375	.935	1.125	.065
SH-RC-10-101K	100	±10	.030	10.0	7	1.625	.935	1.312	.065
SH-RC-15-50K	5	±10	.008	24.0	25	1.375	.700	.937	.082
SH-RC-15-100K	10	±10	.010	20.0	19	1.687	.700	1.50	.082
SH-RC-15-270K	27	±10	.015	16.0	14	1.375	1.0	.937	.082
SH-RC-15-500K	50	±10	.020	15.0	10	1.625	1.0	1.125	.082

Note: 1. K=±10%, M=±20%

# SH-RC- SERIES 0205,0310,0415,0520,0630 THROUGH-HOLE HIGH CURRENT RADIAL ROD CHOKES



## TECHNICAL INFORMATION:

- Testing: (Equivalent acceptable)  
Inductance:  
Measured zero DC current  
on LCR meter HP 4284A  
RDC:QuadTech 1880 Milliohmmeter
- IDC Max Amps:  
The typical current at which the inductance will decrease  $\leq 10\%$  from its initial value
- Temperature range:  $-55^{\circ}\text{C}$  to  $+125^{\circ}\text{C}$  with no load  
 $-55^{\circ}\text{C}$  to  $+85^{\circ}\text{C}$  at full rated current

Note:  
All specifications subject to change without notice.

Part number	A	B	C	D
SH-RC0205	6.00Max	3.50Max	TBD	TBD
SH-RC0310	11.00Max	5.00Max	TBD	TBD
SH-RC0415	16.00Max	5.50Max	TBD	TBD
SH-RC0520	21.00Max	7.00Max	TBD	TBD
SH-RC0630	31.00Max	9.50Max	TBD	TBD

Dimensions: mm

## FEATURES:

- Low cost design general Purpose inductor
- High Saturation current
- Easy construction that uses Ferrite rod cores
- Packaging:Tape & Reel is standard  
Bulk packaging available for smaller quantities
- Tolerance:10% and 5% is standard,  
tighter tolerances available
- Switching Regulators
- Automotive Systems
- Power Amplifiers
- Power Supplies
- EMI/RFI suppression
- DC line Filters



### Additional information:

We reserve the right to make technical changes or modify the contents of this document without prior notice.

SHARE Ltd. Does not accept any responsibility what so ever for potential errors or possible lack of information in this document.

We can offer that even custom-made transformers will be covered by approvals from UL, CSA, KEMA, etc., but we will be happy to assist you in implementing them. New approvals may be required.

## STANDARD SPECIFICATIONS:

Part Number	L uH	DCR $\Omega$ Max	IDC A Max	SRF (MHz) Min	Wire size (mm)	Turns
SH-RC0205-1R0K	1.0	0.040	0.56	200	0.30	11.5
SH-RC0205-1R2K	1.2	0.040	0.56	180	0.30	12.5
SH-RC0310-1R8K	1.8	0.026	1.90	160	0.55	11.5
SH-RC0310-2R2K	2.2	0.028	1.57	150	0.50	13.5
SH-RC0310-2R7K	2.7	0.030	1.57	140	0.50	15.5
SH-RC0310-3R3K	3.3	0.035	1.27	135	0.45	17.5
SH-RC0310-3R9K	3.9	0.050	1.00	110	0.40	18.5
SH-RC0310-4R7K	4.7	0.070	0.76	90	0.35	19.5
SH-RC0415-4R7K	4.7	0.024	2.26	90	0.60	17.5
SH-RC0415-5R6K	5.6	0.030	1.90	80	0.55	18.5
SH-RC0415-6R8K	6.8	0.040	1.57	80	0.50	18.5
SH-RC0415-8R2K	8.2	0.060	1.27	80	0.45	21.5
SH-RC0415-100K	10	0.080	1.00	70	0.40	24.5
SH-RC0520-100K	10	0.040	2.65	60	0.65	22.5
SH-RC0520-120K	12	0.044	2.26	55	0.60	23.5
SH-RC0520-150K	15	0.060	1.90	45	0.55	27.5
SH-RC0520-180K	18	0.080	1.57	40	0.50	29.5
SH-RC0520-220K	22	0.100	1.27	38	0.45	32.5
SH-RC0520-270K	27	0.150	1.00	36	0.40	36.5
SH-RC0630-4R7K	4.7	0.005	16.08	85	1.60	12.5
SH-RC0630-5R6K	5.6	0.005	16.08	80	1.60	14.5
SH-RC0630-6R8K	6.8	0.008	10.61	75	1.30	15.5
SH-RC0630-8R2K	8.2	0.009	9.04	67	1.20	16.5
SH-RC0630-100K	10	0.010	9.04	64	1.20	19.5
SH-RC0630-120K	12	0.018	6.28	57	1.00	20.5
SH-RC0630-150K	15	0.023	5.08	53	0.90	23.5
SH-RC0630-180K	18	0.030	4.02	49	0.80	24.5
SH-RC0630-220K	22	0.045	3.07	44	0.70	27.5
SH-RC0630-270K	27	0.050	3.07	42	0.70	31.5
SH-RC0630-330K	33	0.060	2.65	36	0.65	35.5
SH-RC0630-390K	39	0.080	2.26	34	0.60	40.5
SH-RC0630-470K	47	0.110	1.90	32	0.55	44.5
SH-RC0630-560K	56	0.140	1.57	30	0.50	46.5

Note:1. K= $\pm 10\%$ ,M= $\pm 20\%$