

SH-IRD 01 SERIES THROUGH-HOLE RADIAL HIGH CURRENT POWER CHOKES



Additional information:

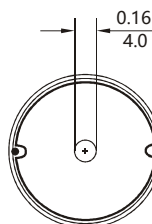
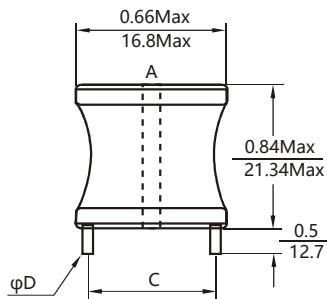
We reserve the right to make technical changes or modify the contents of this document without prior notice.

SHARE Ltd. Does not accept any responsibility what so ever for potential errors or possible lack of information in this document.

We can offer that even custom-made transformers will be covered by approvals from UL, CSA, KEMA, etc., but we will be happy to assist you in implementing them.

New approvals may be required.

STANDARD SPECIFICATIONS:



DIMENSIONS: $\frac{\text{inch}}{\text{mm}}$



FEATURES:

- High Saturation Material
- Polyolefin Shrink Tubing
- Low DC Resistance
- High Reliability Low cost
- Packaging: Tape & Reel is Standard
Bulk packaging available for smaller quantities
- Tolerance: 10% is standard, tighter tolerances available.
- Switching Regulators
- RFI Suppression Filters
- SCR and TRIAC Controls
- Automotive Systems

TECHNICAL INFORMATION:

- Inductance Testing: HP4284A, HP4285A or equivalent
- RDC: QuadTech 1880 Milliohmeter
- Q- HP4342A
- SRF-HP4191A or HP4194A
- Rated Current L value drop 10% typ. at l_{dc} against its initial value
- Temperature rise 40°C Max Reference ambient temperature
- Solderability: 75% of the lead wire shall be covered
- Soldering Methods: Wave, Reflow
- Operating Temperature: -25°C to +85°C
- Storage Temperature: -55°C to +125°C
- Terminal bending strength: 24.5N Min
- Moisture resistance: $\Delta L/L \leq \pm 10\%$ $\Delta Q/Q \leq \pm 25\%$

Note: All specifications subject to change without notice.

| Part Number | L (μH) @1KHz | DCR (ΩMax) | IDC (A Max) | Dim(Inches/mm) C Approx. | Dim(Inches/mm) D Nom. |
|---------------|--------------|------------|-------------|--------------------------|-----------------------|
| SH-IRD01-1R0M | 1.0 | 0.003 | 9 | 0.55/13.97 | 0.051/1.30 |
| SH-IRD01-1R2M | 1.2 | 0.003 | 9 | 0.55/13.97 | 0.051/1.30 |
| SH-IRD01-1R5M | 1.5 | 0.004 | 9 | 0.55/13.97 | 0.051/1.30 |
| SH-IRD01-1R8M | 1.8 | 0.004 | 9 | 0.55/13.97 | 0.051/1.30 |
| SH-IRD01-2R2M | 2.2 | 0.005 | 9 | 0.55/13.97 | 0.051/1.30 |
| SH-IRD01-2R7M | 2.7 | 0.005 | 9 | 0.55/13.97 | 0.051/1.30 |
| SH-IRD01-3R3M | 3.3 | 0.005 | 9 | 0.55/13.97 | 0.051/1.30 |
| SH-IRD01-3R9M | 3.9 | 0.006 | 9 | 0.55/13.97 | 0.051/1.30 |
| SH-IRD01-4R7M | 4.7 | 0.007 | 9 | 0.55/13.97 | 0.051/1.30 |
| SH-IRD01-5R6M | 5.6 | 0.007 | 9 | 0.55/13.97 | 0.051/1.30 |
| SH-IRD01-6R8M | 6.8 | 0.008 | 9 | 0.55/13.97 | 0.051/1.30 |
| SH-IRD01-8R2M | 8.2 | 0.009 | 9 | 0.55/13.97 | 0.051/1.30 |
| SH-IRD01-100K | 10 | 0.010 | 9 | 0.55/13.97 | 0.051/1.30 |
| SH-IRD01-120K | 12 | 0.011 | 9 | 0.55/13.97 | 0.051/1.30 |
| SH-IRD01-150K | 15 | 0.015 | 7.2 | 0.53/13.46 | 0.045/1.14 |
| SH-IRD01-180K | 18 | 0.016 | 7.2 | 0.53/13.46 | 0.045/1.14 |
| SH-IRD01-220K | 22 | 0.020 | 5.5 | 0.53/13.46 | 0.045/1.14 |
| SH-IRD01-270K | 27 | 0.030 | 4.5 | 0.53/13.46 | 0.040/1.01 |
| SH-IRD01-330K | 33 | 0.040 | 4.0 | 0.53/13.46 | 0.040/1.01 |
| SH-IRD01-390K | 39 | 0.046 | 4.0 | 0.53/13.46 | 0.040/1.01 |
| SH-IRD01-470K | 47 | 0.062 | 2.8 | 0.53/13.46 | 0.036/0.91 |
| SH-IRD01-560K | 56 | 0.069 | 2.8 | 0.53/13.46 | 0.036/0.91 |
| SH-IRD01-680K | 68 | 0.077 | 2.8 | 0.50/12.70 | 0.032/0.81 |
| SH-IRD01-820K | 82 | 0.083 | 2.8 | 0.50/12.70 | 0.032/0.81 |
| SH-IRD01-101K | 100 | 0.095 | 2.8 | 0.50/12.70 | 0.032/0.81 |
| SH-IRD01-121K | 120 | 0.127 | 2.0 | 0.50/12.70 | 0.029/0.73 |
| SH-IRD01-151K | 150 | 0.181 | 1.6 | 0.50/12.70 | 0.029/0.73 |
| SH-IRD01-181K | 180 | 0.217 | 1.6 | 0.50/12.70 | 0.025/0.63 |
| SH-IRD01-221K | 220 | 0.240 | 1.6 | 0.50/12.70 | 0.025/0.63 |
| SH-IRD01-271K | 270 | 0.300 | 1.6 | 0.47/11.94 | 0.020/0.51 |
| SH-IRD01-331K | 330 | 0.336 | 1.3 | 0.47/11.94 | 0.020/0.51 |
| SH-IRD01-391K | 390 | 0.460 | 1.0 | 0.47/11.94 | 0.020/0.51 |
| SH-IRD01-471K | 470 | 0.636 | 0.8 | 0.47/11.94 | 0.020/0.51 |
| SH-IRD01-561K | 560 | 0.696 | 0.8 | 0.47/11.94 | 0.020/0.51 |

Note: 1. K=±10%, M=±20%, N=±30%