

SH-IRD 06 SERIES RADIAL LEADED POWER LINE CHOKES

TECHNICAL INFORMATION:

The AIRD-05,06,07,08,04A,06A,08A Series of Power Line Choke is available in 367 standard values covering a wide range of inductance and current. The use of high saturation flux density material make these coils ideal for use in switching regulated power supply applications and wherever high current choke values in a small physical size are needed.

- Inductance Testing: HP4284A, HP4285A or equivalent
 - RDC: QuadTech 1880 Milliohm meter
 - Q: HP4342A
 - SRF: HP4191A or HP4194A
 - Rated Current L value drop 10% typ. at I_{oc} against its initial value
 - Temperature rise 40°C Max Reference ambient temperature
 - Solderability: 75% of the lead wire shall be covered
 - Soldering Methods: Wave, Reflow
 - Operating Temperature: -25°C to +85°C
 - Storage Temperature: -55°C to +125°C
 - Terminal bending strength: 24.5N Min
 - Moisture resistance: $\Delta L \leq \pm 10\%$ $\Delta Q/Q \leq \pm 25\%$
- Note: All specifications subject to change without notice.



FEATURES:

- High Saturation Material
- Polyolefin Shrink Tubing
- Low DC Resistance
- High Reliability Low cost
- Packaging: Tape & Reel is Standard Bulk packaging available for smaller quantities
- Tolerance: 10% is standard, tighter tolerances available.
- Switching Regulators
- RFI Suppression Filters
- SCR and TRIAC Controls
- Automotive Systems



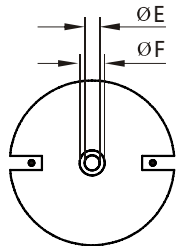
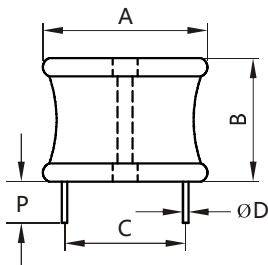
Additional information:

We reserve the right to make technical changes or modify the contents of this document without prior notice.

SHARE Ltd. Does not accept any responsibility what so ever for potential errors or possible lack of information in this document.

We can offer that even custom-made transformers will be covered by approvals from UL, CSA, KEMA, etc., but we will be happy to assist you in implementing them. New approvals may be required.

STANDARD SPECIFICATIONS:



DIMENSIONS: inches/mm

A	B	P(min)	E	F
2.00/50.80	1.50/38.10	0.50/12.70	0.10/2.54	0.25/6.35



Part Number	L (µH) @1KHz	DCR (ΩMax)	IDC (A Max)	Dim C (Inches/mm) Approx.	Dim D (Inches/mm) Nom.
SH-IRD06-4R7M	4.7	0.002	35.0	1.40/35.56	0.105/2.667
SH-IRD06-5R6M	5.6	0.002	35.0	1.40/35.56	0.105/2.667
SH-IRD06-6R8M	6.8	0.003	35.0	1.40/35.56	0.105/2.667
SH-IRD06-8R2M	8.2	0.003	35.0	1.40/35.56	0.105/2.667
SH-IRD06-100K	10.0	0.003	35.0	1.48/37.592	0.105/2.667
SH-IRD06-120K	12.0	0.004	35.0	1.48/37.592	0.105/2.667
SH-IRD06-150K	15.0	0.004	35.0	1.48/37.592	0.105/2.667
SH-IRD06-180K	18.0	0.005	35.0	1.48/37.592	0.105/2.667
SH-IRD06-220K	22.0	0.006	35.0	1.48/37.592	0.105/2.667
SH-IRD06-270K	27.0	0.006	35.0	1.48/37.592	0.105/2.667
SH-IRD06-330K	33.0	0.006	35.0	1.48/37.592	0.105/2.667
SH-IRD06-390K	39.0	0.008	35.0	1.48/37.592	0.105/2.667
SH-IRD06-470K	47.0	0.008	35.0	1.48/37.592	0.105/2.667
SH-IRD06-560K	56.0	0.009	35.0	1.48/37.592	0.105/2.667
SH-IRD06-680K	68.0	0.009	35.0	1.48/37.592	0.105/2.667
SH-IRD06-820K	82.0	0.010	35.0	1.48/37.592	0.105/2.667
SH-IRD06-101K	100.0	0.014	27.0	1.53/38.862	0.094/2.3876
SH-IRD06-121K	120.0	0.015	27.0	1.53/38.862	0.094/2.3876
SH-IRD06-151K	150.0	0.023	21.0	1.49/37.846	0.084/2.1336
SH-IRD06-181K	180.0	0.025	21.0	1.49/37.846	0.084/2.1336
SH-IRD06-221K	220.0	0.028	21.0	1.49/37.846	0.084/2.1336
SH-IRD06-271K	270.0	0.030	21.0	1.49/37.846	0.084/2.1336
SH-IRD06-331K	330.0	0.040	17.0	1.31/33.274	0.075/1.905
SH-IRD06-390K	390.0	0.055	13.5	1.31/33.274	0.068/1.7272
SH-IRD06-471K	470.0	0.061	13.5	1.31/33.274	0.068/1.7272
SH-IRD06-561K	560.0	0.068	13.5	1.40/35.560	0.068/1.7272
SH-IRD06-681K	680.0	0.094	11.4	1.42/36.068	0.060/1.524
SH-IRD06-820K	820.0	0.104	11.4	1.42/36.068	0.060/1.524
SH-IRD06-102K	1000.0	0.143	9.0	1.36/34.544	0.054/1.3716
SH-IRD06-122K	1200.0	0.156	9.0	1.36/34.544	0.054/1.3716
SH-IRD06-152K	1500.0	0.219	7.2	1.31/33.274	0.048/1.2192
SH-IRD06-182K	1800.0	0.241	7.2	1.31/33.274	0.048/1.2192
SH-IRD06-222K	2200.0	0.270	7.2	1.40/35.560	0.048/1.2192
SH-IRD06-272K	2700.0	0.364	5.5	1.36/34.544	0.043/1.0922
SH-IRD06-332K	3300.0	0.498	4.5	1.24/31.496	0.039/0.9906
SH-IRD06-392K	3900.0	0.548	4.5	1.32/33.528	0.039/0.9906
SH-IRD06-472K	4700.0	0.608	4.5	1.32/33.528	0.039/0.9906
SH-IRD06-562K	5600.0	0.671	4.5	1.36/34.544	0.039/0.9906
SH-IRD06-682K	6800.0	0.750	4.5	1.40/35.560	0.039/0.9906
SH-IRD06-822K	8200.0	1.030	4.0	1.45/36.830	0.035/0.8890
SH-IRD06-103K	10000.0	1.160	4.0	1.45/36.830	0.035/0.8890
SH-IRD06-123K	12000.0	1.540	2.8	1.40/35.560	0.031/0.7874
SH-IRD06-153K	15000.0	1.750	2.8	1.40/35.560	0.031/0.7874
SH-IRD06-183K	18000.0	1.940	2.8	1.45/36.830	0.028/0.7112
SH-IRD06-223K	22000.0	2.740	2.0	1.37/34.798	0.028/0.7112
SH-IRD06-273K	27000.0	3.710	1.7	1.37/34.798	0.025/0.6350
SH-IRD06-333K	33000.0	4.160	1.7	1.37/34.798	0.025/0.6350
SH-IRD06-393K	39000.0	5.560	1.4	1.35/34.290	0.025/0.6350
SH-IRD06-473K	47000.0	6.190	1.4	1.35/34.290	0.022/0.5588

Note: 1. K=±10%, M=±20%, N=±30%