

SH-IRD 04A SERIES RADIAL LEADED POWER LINE CHOKES



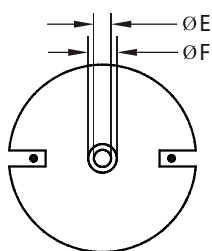
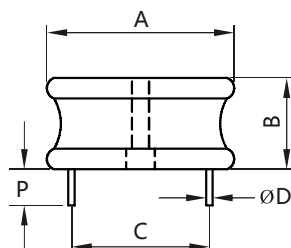
Additional information:

We reserve the right to make technical changes or modify the contents of this document without prior notice.

SHARE Ltd. Does not accept any responsibility what so ever for potential errors or possible lack of information in this document.

We can offer that even custom-made transformers will be covered by approvals from UL, CSA, KEMA, etc., but we will be happy to assist you in implementing them. New approvals may be required.

STANDARD SPECIFICATIONS:



DIMENSIONS: inches/mm

A	B	P(min)	E	F
1.60/40.64	0.68/17.27	0.50/12.70	0.25/6.35	0.29/7.366



FEATURES:

- High Saturation Material
- Polyolefin Shrink Tubing
- Low DC Resistance
- High Reliability Low cost
- Packaging: Tape & Reel is Standard Bulk packaging available for smaller quantities
- Tolerance:10% is standard, tighter tolerances available.
- Switching Regulators
- RFI Suppression Filters
- SCR and TRIAC Controls
- Automotive Systems

TECHNICAL INFORMATION:

The AIRD-05,06,07,08,04A,06A,08A Series of Power Line Choke is available in 367 standard values covering a wide rang of inductance and current. The use of high saturation flux density material make these coils ideal for use in switching regulated power supply applications and wherever high current choke values in a small physical size are needed.

- Inductance Testing: HP4284A,HP4285A or equivalent
 - RDC: QuadTech 1880 Milliohmmer
 - Q- HP4342A
 - SRF-HP4191A or HP4194A
 - Rated Current L value drop10%typ.at I_{DC} against its initial value
 - Temperature rise 40°C Max Reference ambient temperature
 - Solderability: 75% of the lead wire shall be covered
 - Soldering Methods: Wave,Reflow
 - Operating Temperature:-25°C to +85°C
 - Storage Temperature: -55°C to +125°C
 - Terminal bending strength:24.5N Min
 - Moisture resistance:ΔL/L≤±10% ΔQ/Q≤±25%
- Note: All specifications subject to change without notice.

Part Number	L (μH) @1KHz	DCR (ΩMax)	IDC (A Max)	Dim C (Inches/mm) Approx.	Dim D (Inches/mm) Nom.
SH-IRD04A-2R2M	2.2	0.0028	28.2	1.10/27.94	0.094/2.3876
SH-IRD04A-3R9M	3.9	0.0037	27.2	1.10/27.94	0.094/2.3876
SH-IRD04A-4R7M	4.7	0.0040	25.7	1.10/27.94	0.094/2.3876
SH-IRD04A-6R8M	6.8	0.0048	23.7	1.10/27.94	0.094/2.3876
SH-IRD04A-8R2M	8.2	0.0055	22.0	1.16/29.46	0.094/2.3876
SH-IRD04A-120K	12.0	0.0067	20.7	1.16/29.46	0.084/2.1336
SH-IRD04A-150K	15.0	0.0070	20.5	1.16/29.46	0.084/2.1336
SH-IRD04A-180K	18.0	0.0094	20.5	1.16/29.46	0.084/2.1336
SH-IRD04A-220K	22.0	0.0103	20.4	1.18/29.97	0.084/2.1336
SH-IRD04A-270K	27.0	0.0121	18.9	1.18/29.97	0.084/2.1336
SH-IRD04A-330K	33.0	0.0163	14.0	1.17/29.72	0.068/1.7272
SH-IRD04A-390K	39.0	0.0173	13.6	1.17/29.72	0.068/1.7272
SH-IRD04A-470K	47.0	0.0196	12.8	1.17/29.72	0.068/1.7272
SH-IRD04A-560K	56.0	0.0208	12.4	1.18/29.97	0.068/1.7272
SH-IRD04A-680K	68.0	0.0292	10.7	1.17/29.72	0.060/1.5240
SH-IRD04A-820K	82.0	0.0319	10.2	1.18/29.97	0.060/1.5240
SH-IRD04A-101K	100.0	0.0348	9.8	1.18/29.97	0.060/1.5240
SH-IRD04A-121K	120.0	0.0480	8.3	1.18/29.97	0.048/1.2192
SH-IRD04A-151K	150	0.0530	7.90	1.18/29.97	0.048/1.219
SH-IRD04A-181K	180	0.0743	6.40	1.18/29.97	0.048/1.219
SH-IRD04A-221K	220	0.0833	6.00	1.19/30.23	0.043/1.092
SH-IRD04A-271K	270	0.0940	5.70	1.19/30.23	0.043/1.092
SH-IRD04A-331K	330	0.1270	4.80	1.12/28.48	0.039/0.991
SH-IRD04A-391K	390	0.1380	4.60	1.12/28.48	0.039/0.991
SH-IRD04A-471K	470	0.1840	4.10	1.12/28.48	0.039/0.991
SH-IRD04A-561K	560	0.2030	3.90	1.12/28.48	0.033/0.838
SH-IRD04A-681K	680	0.2790	3.20	1.12/28.48	0.033/0.838
SH-IRD04A-821K	820	0.3140	3.10	1.12/28.48	0.033/0.838
SH-IRD04A-102K	1000	0.3480	2.90	1.14/28.96	0.031/0.787
SH-IRD04A-122K	1200	0.4940	2.40	1.15/29.21	0.031/0.787
SH-IRD04A-152K	1500	0.5480	2.30	1.14/28.96	0.031/0.787
SH-IRD04A-182K	1800	0.7320	1.95	1.14/28.96	0.028/0.711
SH-IRD04A-222K	2200	0.8090	1.80	1.12/28.45	0.028/0.711
SH-IRD04A-272K	2700	1.1200	1.53	1.13/28.70	0.025/0.635
SH-IRD04A-332K	3300	1.8200	1.46	1.13/28.70	0.025/0.635
SH-IRD04A-392K	3900	1.3800	1.40	1.13/28.70	0.025/0.635

K=±10%,M=±20%