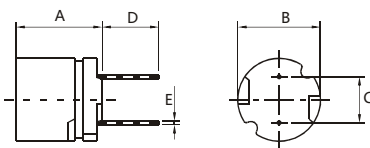


# SH-GS 0606-0708 SERIES THROUGH-HOLE RADIAL SHIELDED POWER INDUCTOR



## TECHNICAL INFORMATION:

### FEATURES:

- Magnetically Shielded Construction
- Heat Resistant Molded Resin
- Excellent Mechanical Strength
- Excellent Solderability
- High Reliability
- Low Profile
- Packaging: Tape & Reel is standard (Qty: 2000 pcs)
- Bulk packaging available for smaller quantities
- Tolerance: 10% and 5% is standard, tighter tolerances available
- VCRs, AC/DC, DC/DC Converter
- Video Cameras
- Communication System
- Automotive Systems
- Liquid Crystal Televisions
- Power Supplier
- Network Systems
- Computer Peripheral Equipment

- Testing: (Equivalent acceptable)
- Inductance: HP4284A
- RDC: QuadTech 1880 Milliohmmeter
- Q- HP4342A - SRF-HP4191A
- IDC Max is decreased 10% against its initial value
- Operating temperature: -40°C to +105°C
- Storage Temperature: -40°C to +105°C
- Solder methods: Vapor Phase, Infrared Reflow
- Resistance to soldering heat: 260°C for 10 seconds
- Solvent resistance: Conforms to MIL-STD-202E
- Marking: Inductance & Tolerance

Note: All specifications subject to change without notice

Part number	A	B	C	D	E
SH-GS0606	6.5Max	6.0±0.5	4.0±0.5	4.0Min	0.55
SH-GS0708	7.5Max	7.8±0.5	5.0±0.5	4.0Min	0.65

dimension(mm)



### Additional information:

We reserve the right to make technical changes or modify the contents of this document without prior notice.

SHARE Ltd. Does not accept any responsibility what so ever for potential errors or possible lack of information in this document.

We can offer that even custom-made transformers will be covered by approvals from UL, CSA, KEMA, etc., but we will be happy to assist you in implementing them. New approvals may be required.

### STANDARD SPECIFICATIONS:

Part Number	L μH	Test Freq Mhz	DCR Ω Max	IDC Max mA	Part Number	L μH	Test Freq Mhz	DCR Ω Max	IDC Max mA
SH-GS0606-220M	22	2.52	0.13	960	SH-GS0708-220M	22	2.52	0.08	1600
SH-GS0606-270M	27	2.52	0.18	870	SH-GS0708-270M	27	2.52	0.10	1400
SH-GS0606-330M	33	2.52	0.21	780	SH-GS0708-330M	33	2.52	0.14	1300
SH-GS0606-390M	39	2.52	0.26	720	SH-GS0708-390M	39	2.52	0.15	1200
SH-GS0606-470M	47	2.52	0.29	660	SH-GS0708-470M	47	2.52	0.17	1100
SH-GS0606-560K	56	2.52	0.33	600	SH-GS0708-560K	56	2.52	0.19	990
SH-GS0606-680K	68	2.52	0.36	550	SH-GS0708-680K	68	2.52	0.21	890
SH-GS0606-820K	82	2.52	0.39	500	SH-GS0708-820K	82	2.52	0.27	810
SH-GS0606-101K	100	0.001	0.54	450	SH-GS0708-101K	100	0.001	0.32	740
SH-GS0606-121K	120	0.001	0.62	410	SH-GS0708-121K	120	0.001	0.36	670
SH-GS0606-151K	150	0.001	0.72	370	SH-GS0708-151K	150	0.001	0.51	600
SH-GS0606-181K	180	0.001	0.88	340	SH-GS0708-181K	180	0.001	0.57	550
SH-GS0606-221K	220	0.001	0.99	300	SH-GS0708-221K	220	0.001	0.76	500
SH-GS0606-271K	270	0.001	1.52	270	SH-GS0708-271K	270	0.001	0.86	450
SH-GS0606-331K	330	0.001	1.69	250	SH-GS0708-331K	330	0.001	0.97	410
SH-GS0606-391K	390	0.001	1.85	230	SH-GS0708-391K	390	0.001	1.28	370
SH-GS0606-471K	470	0.001	2.85	210	SH-GS0708-471K	470	0.001	1.44	340
SH-GS0606-561K	560	0.001	3.21	190	SH-GS0708-561K	560	0.001	1.61	310
SH-GS0606-681K	680	0.001	3.60	170	SH-GS0708-681K	680	0.001	2.07	280
SH-GS0606-821K	820	0.001	4.87	160	SH-GS0708-821K	820	0.001	2.33	260
SH-GS0606-102K	1000	0.001	5.65	140	SH-GS0708-102K	1000	0.001	2.72	230
					SH-GS0708-122K	1200	0.001	3.98	210
					SH-GS0708-152K	1500	0.001	4.50	190
					SH-GS0708-182K	1800	0.001	6.81	170
					SH-GS0708-222K	2200	0.001	7.56	160
					SH-GS0708-272K	2700	0.001	8.54	140
					SH-GS0708-332K	3300	0.001	9.74	130
					SH-GS0708-392K	3900	0.001	12.9	120
					SH-GS0708-472K	4700	0.001	14.7	110
					SH-GS0708-562K	5600	0.001	20.4	99
					SH-GS0708-682K	6800	0.001	23.0	89
					SH-GS0708-822K	8200	0.001	30.6	81
					SH-GS0708-102K	10000	0.001	35.0	74

Note: 1. K=±10%, M=±20%, N=±30%