

SH-IRD 08 SERIES RADIAL LEADED POWER LINE CHOKES

TECHNICAL INFORMATION:

The AIRD-05,06,07,08,04A,06A,08A Series of Power Line Choke is available in 367 standard values covering a wide range of inductance and current. The use of high saturation flux density material make these coils ideal for use in switching regulated power supply applications and wherever high current choke values in a small physical size are needed.

- Inductance Testing: HP4284A, HP4285A or equivalent
 - RDC: QuadTech 1880 Milliohm meter
 - Q: HP4342A
 - SRF: HP4191A or HP4194A
 - Rated Current L value drop 10% typ. at I_{bc} against its initial value
 - Temperature rise 40°C Max Reference ambient temperature
 - Solderability: 75% of the lead wire shall be covered
 - Soldering Methods: Wave, Reflow
 - Operating Temperature: -25°C to +85°C
 - Storage Temperature: -55°C to +125°C
 - Terminal bending strength: 24.5N Min
 - Moisture resistance: $\Delta L/L \leq \pm 10\%$ $\Delta Q/Q \leq \pm 25\%$
- Note: All specifications subject to change without notice.



FEATURES:

- High Saturation Material
- Polyolefin Shrink Tubing
- Low DC Resistance
- High Reliability Low cost
- Packaging: Tape & Reel is Standard Bulk packaging available for smaller quantities
- Tolerance: 10% is standard, tighter tolerances available.
- Switching Regulators
- RFI Suppression Filters
- SCR and TRIAC Controls
- Automotive Systems



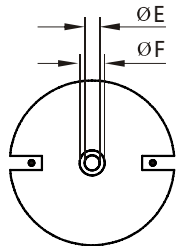
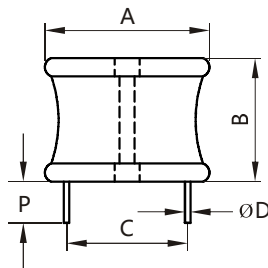
Additional information:

We reserve the right to make technical changes or modify the contents of this document without prior notice.

SHARE Ltd. Does not accept any responsibility what so ever for potential errors or possible lack of information in this document.

We can offer that even custom-made transformers will be covered by approvals from UL, CSA, KEMA, etc., but we will be happy to assist you in implementing them. New approvals may be required.

STANDARD SPECIFICATIONS:



DIMENSIONS: inches/mm

A	B	P(min)	E	F
2.40/60.96	1.50/38.10	0.50/12.70	0.10/2.54	0.25/6.35



Part Number	L (µH) @1KHz	DCR (ΩMax)	IDC (A Max)	Dim C (Inches/mm) Approx.	Dim D (Inches/mm) Nom.
SH-IRD08-5R6M	5.6	0.0012	55.0	*	0.225/5.7150
SH-IRD08-6R8M	6.8	0.0013	55.0	*	0.225/5.7150
SH-IRD08-8R2M	8.2	0.0015	55.0	*	0.225/5.7150
SH-IRD08-100K	10.0	0.0017	55.0	*	0.225/5.7150
SH-IRD08-120K	12.0	0.0020	55.0	*	0.225/5.7150
SH-IRD08-150K	15.0	0.0021	55.0	*	0.225/5.7150
SH-IRD08-180K	18.0	0.0023	55.0	*	0.225/5.7150
SH-IRD08-220K	22.0	0.0025	55.0	*	0.225/5.7150
SH-IRD08-270K	27.0	0.0026	55.0	*	0.225/5.7150
SH-IRD08-330K	33.0	0.0029	55.0	*	0.225/5.7150
SH-IRD08-390K	39.0	0.0033	55.0	*	0.225/5.7150
SH-IRD08-470K	47.0	0.0035	55.0	*	0.225/5.7150
SH-IRD08-560K	56.0	0.0039	55.0	*	0.225/5.7150
SH-IRD08-680K	68.0	0.0043	50.0	*	0.225/5.7150
SH-IRD08-820K	82.0	0.0048	45.0	*	0.210/5.3340
SH-IRD08-101K	100.0	0.0052	40.0	*	0.210/5.3340
SH-IRD08-121K	120.0	0.0071	39.0	*	0.210/5.3340
SH-IRD08-151K	150.0	0.0079	38.0	*	0.210/5.3340
SH-IRD08-181K	180.0	0.0087	37.0	*	0.210/5.3340
SH-IRD08-221K	220.0	0.0120	33.0	*	0.190/4.8260
SH-IRD08-271K	270.0	0.0140	30.0	*	0.190/4.8260
SH-IRD08-331K	330.0	0.0180	27.0	1.80/45.72	0.120/3.0480
SH-IRD08-390K	390.0	0.0200	25.0	1.70/43.18	0.120/3.0480
SH-IRD08-471K	470.0	0.0280	21.0	1.70/43.18	0.105/2.6670
SH-IRD08-561K	560.0	0.0310	20.0	1.45/44.45	0.105/2.6670
SH-IRD08-681K	680.0	0.034	19.0	1.80/45.72	0.105/2.6670
SH-IRD08-820K	820.0	0.047	16.0	1.80/45.72	0.049/2.3876
SH-IRD08-102K	1000.0	0.052	15.5	1.75/44.45	0.049/2.3876
SH-IRD08-122K	1200.0	0.057	15	1.78/45.212	0.049/2.3876
SH-IRD08-152K	1500.0	0.080	13.0	1.80/45.72	0.084/2.1336
SH-IRD08-182K	1800.0	0.088	12.0	1.70/43.18	0.084/2.1336
SH-IRD08-222K	2200.0	0.122	10.0	1.70/43.18	0.075/1.905
SH-IRD08-272K	2700.0	0.135	10.0	1.75/44.45	0.075/1.905
SH-IRD08-332K	3300.0	0.188	8.0	1.80/45.72	0.068/1.7272
SH-IRD08-392K	3900.0	0.205	8.0	1.75/44.45	0.068/1.7272
SH-IRD08-472K	4700.0	0.283	6.7	1.78/45.212	0.060/1.5240
SH-IRD08-562K	5600.0	0.309	6.4	1.80/45.72	0.060/1.5240
SH-IRD08-682K	6800.0	0.431	5.4	1.70/43.18	0.054/1.3716
SH-IRD08-822K	8200.0	0.472	5.2	1.75/44.45	0.054/1.3716
SH-IRD08-103K	10000.0	0.521	5.0	1.80/45.72	0.054/1.3716
SH-IRD08-123K	12000.0	0.717	4.2	1.80/45.72	0.048/1.2192
SH-IRD08-153K	15000.0	0.803	4.0	1.75/44.45	0.048/1.2192
SH-IRD08-183K	18000.0	1.111	3.4	1.78/45.212	0.043/1.0922
SH-IRD08-223K	22000.0	1.228	3.2	1.80/45.72	0.043/1.0922
SH-IRD08-273K	27000.0	1.716	2.7	1.75/44.45	0.039/0.9906
SH-IRD08-333K	33000.0	1.896	2.6	1.80/45.72	0.039/0.9906
SH-IRD08-393K	39000.0	2.590	2.3	1.75/44.45	0.035/0.8890
SH-IRD08-473K	47000.0	2.840	2.2	1.78/45.212	0.035/0.8890
SH-IRD08-563K	56000.0	3.104	2.1	1.80/45.72	0.035/0.8890
SH-IRD08-683K	68000.0	4.331	1.7	1.85/46.99	0.031/0.7874
SH-IRD08-823K	82000.0	4.756	1.6	1.90/48.26	0.031/0.7874
SH-IRD08-104K	100000.0	6.652	1.4	1.95/49.53	0.028/0.7112

* Inductors wound with 2 standards of wire. Consult Engineering for dimension.
K=±10%, M=±20%