

SH-IRD 05 SERIES RADIAL LEADED POWER LINE CHOKES



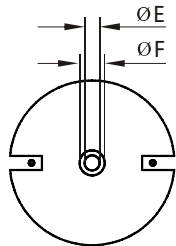
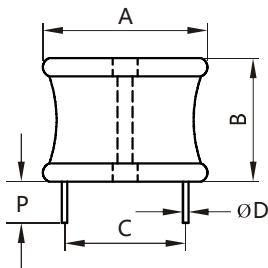
Additional information:

We reserve the right to make technical changes or modify the contents of this document without prior notice.

SHARE Ltd. Does not accept any responsibility what so ever for potential errors or possible lack of information in this document.

We can offer that even custom-made transformers will be covered by approvals from UL, CSA, KEMA, etc., but we will be happy to assist you in implementing them. New approvals may be required.

STANDARD SPECIFICATIONS:



DIMENSIONS: inches/mm

A	B	P(min)	ØE	ØF
1.60/40.64	1.45/36.83	0.50/12.7	0.10/2.54	0.25/6.35



FEATURES:

- High Saturation Material
- Polyolefin Shrink Tubing
- Low DC Resistance
- High Reliability Low cost
- Packaging: Tape & Reel is Standard Bulk packaging available for smaller quantities
- Tolerance: 10% is standard, tighter tolerances available.
- Switching Regulators
- RFI Suppression Filters
- SCR and TRIAC Controls
- Automotive Systems

TECHNICAL INFORMATION:

The AIRD-05,06,07,08,04A,06A,08A Series of Power Line Choke is available in 367 standard values covering a wide range of inductance and current. The use of high saturation flux density material make these coils ideal for use in switching regulated power supply applications and wherever high current choke values in a small physical size are needed.

- Inductance Testing: HP4284A, HP4285A or equivalent
 - RDC: QuadTech 1880 Milliohm meter
 - Q- HP4342A
 - SRF-HP4191A or HP4194A
 - Rated Current L value drop 10% typ. at I_{bc} against its initial value
 - Temperature rise 40°C Max Reference ambient temperature
 - Solderability: 75% of the lead wire shall be covered
 - Soldering Methods: Wave, Reflow
 - Operating Temperature: -25°C to +85°C
 - Storage Temperature: -55°C to +125°C
 - Terminal bending strength: 24.5N Min
 - Moisture resistance: ΔL/L ≤ ±10% ΔQ/Q ≤ ±25%
- Note: All specifications subject to change without notice.

Part Number	L (μH) @1KHz	DCR (ΩMax)	IDC (A Max)	Dim C (Inches/mm) Approx.	Dim D (Inches/mm) Nom.
SH-IRD05-1R8M	1.8	0.002	35.0	1.11/28.194	0.105/2.667
SH-IRD05-2R2M	2.2	0.002	35.0	1.11/28.194	0.105/2.667
SH-IRD05-2R7M	2.7	0.002	35.0	1.11/28.194	0.105/2.667
SH-IRD05-3R3M	3.3	0.002	35.0	1.11/28.194	0.105/2.667
SH-IRD05-3R9M	3.9	0.003	35.0	1.11/28.194	0.105/2.667
SH-IRD05-4R7M	4.7	0.003	35.0	1.11/28.194	0.105/2.667
SH-IRD05-5R6M	5.6	0.003	35.0	1.11/28.194	0.105/2.667
SH-IRD05-6R8M	6.8	0.003	35.0	1.11/28.194	0.105/2.667
SH-IRD05-8R2M	8.2	0.003	35.0	1.11/28.194	0.105/2.667
SH-IRD05-100k	10.0	0.004	35.0	1.11/28.194	0.105/2.667
SH-IRD05-120K	12.0	0.004	35.0	1.16/29.464	0.105/2.667
SH-IRD05-150K	15.0	0.005	35.0	1.16/29.464	0.105/2.667
SH-IRD05-180K	18.0	0.007	27.0	1.16/29.464	0.094/2.3876
SH-IRD05-220K	22.0	0.007	27.0	1.16/29.464	0.094/2.3876
SH-IRD05-270K	27.0	0.008	27.0	1.16/29.464	0.094/2.3876
SH-IRD05-330K	33.0	0.009	27.0	1.16/29.464	0.094/2.3876
SH-IRD05-390K	39.0	0.010	27.0	1.16/29.464	0.094/2.3876
SH-IRD05-470K	47.0	0.011	27.0	1.16/29.464	0.094/2.3876
SH-IRD05-560K	56.0	0.013	21.0	1.16/29.464	0.094/2.3876
SH-IRD05-680K	68.0	0.015	21.0	1.25/31.750	0.84/2.1336
SH-IRD05-820K	82.0	0.017	21.0	1.28/32.512	0.84/2.1336
SH-IRD05-101K	100.0	0.018	21.0	1.25/31.750	0.84/2.1336
SH-IRD05-121K	120.0	0.022	17.0	1.16/29.464	0.075/1.9152
SH-IRD05-151K	150.0	0.025	17.0	1.16/29.464	0.075/1.9152
SH-IRD05-181K	180.0	0.035	13.5	1.10/27.94	0.068/1.7272
SH-IRD05-221K	220.0	0.040	13.5	1.10/27.94	0.068/1.7272
SH-IRD05-271K	270.0	0.044	13.5	1.10/27.94	0.068/1.7272
SH-IRD05-331K	330.0	0.049	13.5	1.11/28.194	0.068/1.7272
SH-IRD05-390K	390.0	0.070	11.4	1.15/29.21	0.060/1.524
SH-IRD05-471K	470.0	0.078	11.4	1.07/27.178	0.060/1.524
SH-IRD05-561K	560.0	0.105	9.0	1.07/27.178	0.054/1.3716
SH-IRD05-681K	680.0	0.115	9.0	1.07/27.178	0.054/1.3716
SH-IRD05-820K	820.0	0.127	9.0	1.12/28.448	0.054/1.3716
SH-IRD05-102K	1000.0	0.176	7.2	1.12/28.448	0.048/1.2192
SH-IRD05-122K	1200.0	0.195	7.2	1.12/28.448	0.048/1.2192
SH-IRD05-152K	1500.0	0.274	5.5	1.12/28.448	0.043/1.0922
SH-IRD05-182K	1800.0	0.302	5.5	1.13/28.702	0.043/1.0922
SH-IRD05-222K	2200.0	0.338	5.5	1.16/29.464	0.043/1.0922
SH-IRD05-272K	2700.0	0.459	4.5	1.02/25.908	0.039/0.9906
SH-IRD05-332K	3300.0	0.642	4.0	1.02/25.908	0.035/0.8890
SH-IRD05-392K	3900.0	0.699	4.0	1.14/28.956	0.035/0.8890
SH-IRD05-472K	4700.0	0.775	4.0	1.14/28.956	0.035/0.8890
SH-IRD05-562K	5600.0	0.843	4.0	1.14/28.956	0.035/0.8890
SH-IRD05-682K	6800.0	1.15	2.8	1.06/26.924	0.031/0.7874
SH-IRD05-822K	8200.0	1.26	2.8	1.16/29.464	0.031/0.7874
SH-IRD05-103K	10000.0	1.74	2.0	1.13/28.702	0.028/0.7112
SH-IRD05-123K	12000.0	1.92	2.0	1.13/28.702	0.028/0.7112
SH-IRD05-153K	15000.0	2.17	2.0	1.13/28.702	0.028/0.7112

Note: 1. K=±10%, M=±20%, N=±30%