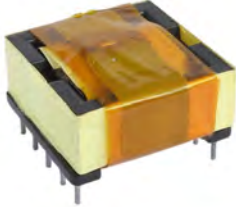


SH-EFD SERIES SWITCHING POWER TRANSFORMER

FEATURES



Horizontal installation
Multi out-put applied
in denseness installation

Bulk packaging is standard
Custom design available

Drive transformers
Main transformers
Smoothing chokes
General purpose use
Switching power supplies
AC-DC, DC-DC converters



Additional information:

We reserve the right to make technical changes or modify the contents of this document without prior notice.

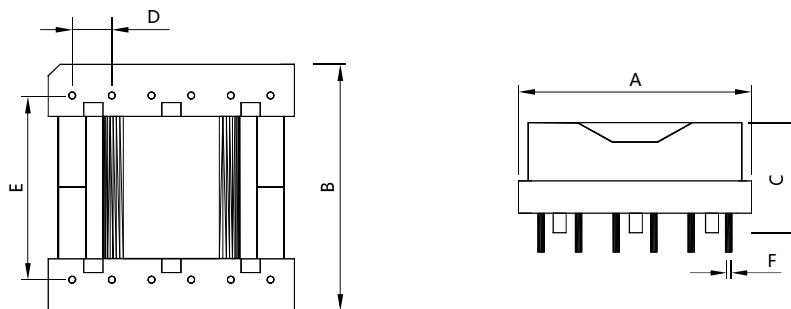
SHARE Ltd. Does not accept any responsibility what so ever for potential errors or possible lack of information in this document.

We can offer that even custom-made transformers will be covered by approvals from UL, CSA, KEMA, etc., but we will be happy to assist you in implementing them. New approvals may be required.

Part Number	Type	No. of Terminal pins	Max A	Max B	Max C	±0.3 D	±0.5 E	±0.1 F	Max. output (VA)
FATEFD 15-A	H	8	17	18	9.5	3.7	13.7	0.6	5
FATEFD 15-B	H	8	17	18	9.5	3.75	13.75	0.6	5
FATEFD 15-C	H	8	17	18	9.5	3.8	13.7	0.6	5
FATEFD 20-A	H	8	22	23	11.0	5.0	17.5	0.6	18
FATEFD 20-B	H	9	22	23	11.0	5.0	17.5	0.6	18
FATEFD 20-C	H	10	22	26	15.0	3.8	23.8	0.6	18
FATEFD 25-A	H	10	27	28	13.0	5.0	22.45	0.8	45
FATEFD 25-B	H	10	27	28	15.0	5.0	22.5	0.8	45
FATEFD 30-A	H	12	32	33	14.0	5.0	27.4	0.8	70
FATEFD 30-B	H	12	32	36	18.0	5.0	30.0	0.8	70
FATEFD 30-C	H	12	32	37	14.0	5.0	32.0	0.8	70

Note: The output power is only for forward model and the frequency at 100kHz

MECHANICAL DRAWING (mm)



Type H