

SH-IRD 07 SERIES RADIAL LEADED POWER LINE CHOKES

TECHNICAL INFORMATION:

The AIRD-05,06,07,08,04A,06A,08A Series of Power Line Choke is available in 367 standard values covering a wide range of inductance and current. The use of high saturation flux density material make these coils ideal for use in switching regulated power supply applications and wherever high current choke values in a small physical size are needed.

- Inductance Testing: HP4284A, HP4285A or equivalent
 - RDC: QuadTech 1880 Milliohm meter
 - Q: HP4342A
 - SRF: HP4191A or HP4194A
 - Rated Current L value drop 10% typ. at I_{DC} against its initial value
 - Temperature rise 40°C Max Reference ambient temperature
 - Solderability: 75% of the lead wire shall be covered
 - Soldering Methods: Wave, Reflow
 - Operating Temperature: -25°C to +85°C
 - Storage Temperature: -55°C to +125°C
 - Terminal bending strength: 24.5N Min
 - Moisture resistance: $\Delta L/L \leq \pm 10\%$ $\Delta Q/Q \leq \pm 25\%$
- Note: All specifications subject to change without notice.



FEATURES:

- High Saturation Material
- Polyolefin Shrink Tubing
- Low DC Resistance
- High Reliability Low cost
- Packaging: Tape & Reel is Standard Bulk packaging available for smaller quantities
- Tolerance: 10% is standard, tighter tolerances available.
- Switching Regulators
- RFI Suppression Filters
- SCR and TRIAC Controls
- Automotive Systems



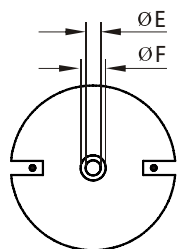
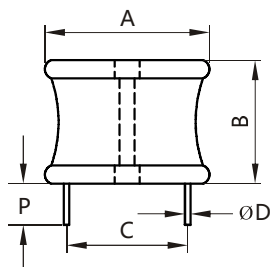
Additional information:

We reserve the right to make technical changes or modify the contents of this document without prior notice.

SHARE Ltd. Does not accept any responsibility what so ever for potential errors or possible lack of information in this document.

We can offer that even custom-made transformers will be covered by approvals from UL, CSA, KEMA, etc., but we will be happy to assist you in implementing them. New approvals may be required.

STANDARD SPECIFICATIONS:



DIMENSIONS: inches/mm

A	B	P(min)	E	F
2.40/60.96	1.50/38.10	0.50/12.70	0.10/2.54	0.25/6.35



Part Number	L (µH) @1KHz	DCR (ΩMax)	IDC (A Max)	Dim C (Inches/mm) Approx.	Dim D (Inches/mm) Nom.
SH-IRD07-5R6M	5.6	0.0018	45.0	1.60/40.64	0.120/3.048
SH-IRD07-6R8M	6.8	0.0021	45.0	1.60/40.64	0.120/3.048
SH-IRD07-8R2M	8.2	0.0022	45.0	1.60/40.64	0.120/3.048
SH-IRD07-100K	10.0	0.0024	45.0	1.60/40.64	0.120/3.048
SH-IRD07-120K	12.0	0.0025	45.0	1.60/40.64	0.120/3.048
SH-IRD07-150K	15.0	0.0028	42.0	1.70/43.18	0.120/3.048
SH-IRD07-180K	18.0	0.0032	40.0	1.70/43.18	0.120/3.048
SH-IRD07-220K	22.0	0.0036	38.0	1.70/43.18	0.120/3.048
SH-IRD07-270K	27.0	0.0042	38.0	1.70/43.18	0.120/3.048
SH-IRD07-330K	33.0	0.0045	37.0	1.70/43.18	0.120/3.048
SH-IRD07-390K	39.0	0.0048	36.0	1.80/45.72	0.120/3.048
SH-IRD07-470K	47.0	0.0057	35.0	1.80/45.72	0.120/3.048
SH-IRD07-560K	56.0	0.0069	35.0	1.80/45.72	0.120/3.048
SH-IRD07-680K	68.0	0.0078	35.0	1.80/45.72	0.120/3.048
SH-IRD07-820K	82.0	0.0093	35.0	1.80/45.72	0.120/3.048
SH-IRD07-101K	100.0	0.0103	27.0	1.80/45.72	0.120/3.048
SH-IRD07-121K	120.0	0.0108	27.0	1.80/45.72	0.120/3.048
SH-IRD07-151K	150.0	0.0120	25.0	1.80/45.72	0.120/3.048
SH-IRD07-181K	180.0	0.0156	22.0	1.80/45.72	0.120/3.048
SH-IRD07-221K	220.0	0.0168	22.0	1.80/45.72	0.105/2.667
SH-IRD07-271K	270.0	0.0228	21.0	1.80/45.72	0.105/2.667
SH-IRD07-331K	330.0	0.0300	17.0	1.80/45.72	0.094/2.3876
SH-IRD07-390K	390.0	0.0432	13.5	1.70/43.18	0.084/2.1336
SH-IRD07-471K	470.0	0.0456	13.5	1.70/43.18	0.075/1.9050
SH-IRD07-561K	560.0	0.0480	13.5	1.75/44.45	0.075/1.9050
SH-IRD07-681K	680.0	0.0516	12.0	1.80/45.72	0.075/1.9050
SH-IRD07-820K	820.0	0.0648	11.5	1.80/45.72	0.075/1.9050
SH-IRD07-102K	1000.0	0.0936	10.0	1.75/44.45	0.068/1.7272
SH-IRD07-122K	1200.0	0.1020	9.50	1.78/45.212	0.068/1.7272
SH-IRD07-152K	1500.0	0.1176	8.00	1.80/45.72	0.068/1.7272
SH-IRD07-182K	1800.0	0.1536	7.50	1.70/43.18	0.060/1.5240
SH-IRD07-222K	2200.0	0.2160	7.20	1.70/43.18	0.054/1.3716
SH-IRD07-272K	2700.0	0.2424	6.00	1.75/44.45	0.054/1.3716
SH-IRD07-332K	3300.0	0.2640	5.50	1.80/45.72	0.054/1.3716
SH-IRD07-392K	3900.0	0.3480	5.20	1.75/44.75	0.048/1.2192
SH-IRD07-472K	4700.0	0.3924	5.00	1.78/45.212	0.048/1.2192
SH-IRD07-562K	5600.0	0.4320	4.70	1.80/45.72	0.048/1.2192
SH-IRD07-682K	6800.0	0.5940	4.50	1.70/43.18	0.043/1.0922
SH-IRD07-822K	8200.0	0.6600	4.00	1.75/44.45	0.043/1.0922
SH-IRD07-103K	10000.0	0.7560	4.00	1.80/45.72	0.043/1.0922
SH-IRD07-123K	12000.0	0.9840	3.50	1.80/45.72	0.039/0.9986
SH-IRD07-153K	15000.0	1.4160	2.80	1.75/44.45	0.035/0.8890
SH-IRD07-183K	18000.0	1.5240	2.80	1.78/45.212	0.035/0.8890
SH-IRD07-223K	22000.0	1.8000	2.30	1.80/45.72	0.035/0.8890
SH-IRD07-273K	27000.0	2.3760	2.00	1.75/44.45	0.031/0.7874
SH-IRD07-333K	33000.0	2.6400	1.90	1.80/45.72	0.031/0.7874
SH-IRD07-393K	39000.0	3.5760	1.60	1.75/44.45	0.028/0.7112
SH-IRD07-473K	47000.0	3.9360	1.60	1.78/45.212	0.028/0.7112
SH-IRD07-563K	56000.0	4.3200	1.50	1.80/45.72	0.028/0.7112
SH-IRD07-683K	68000.0	5.2200	1.30	1.85/46.99	0.028/0.7112

Note: 1. K=±10%, M=±20%, N=±30%