

SH-IRD 03 SERIES THROUGH-HOLE RADIAL HIGH CURRENT POWER CHOKES



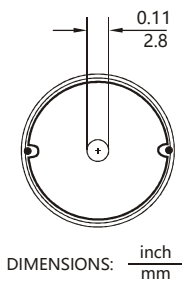
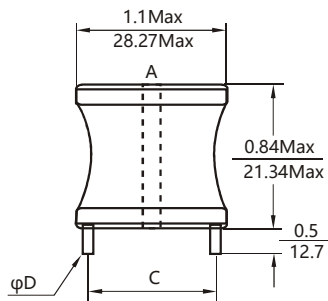
Additional information:

We reserve the right to make technical changes or modify the contents of this document without prior notice.

SHARE Ltd. Does not accept any responsibility what so ever for potential errors or possible lack of information in this document.

We can offer that even custom-made transformers will be covered by approvals from UL, CSA, KEMA, etc., but we will be happy to assist you in implementing them. New approvals may be required.

STANDARD SPECIFICATIONS:



FEATURES:

- High Saturation Material
- Polyolefin Shrink Tubing
- Low DC Resistance
- High Reliability Low cost
- Packaging: Tape & Reel is Standard Bulk packaging available for smaller quantities
- Tolerance:10% is standard, tighter tolerances available.
- Switching Regulators
- RFI Suppression Filters
- SCR and TRIAC Controls
- Automotive Systems

TECHNICAL INFORMATION:

- Inductance Testing: HP4284A, HP4285A or equivalent
- RDC: QuadTech 1880 Milliohmeter
- Q- HP4342A
- SRF-HP4191A or HP4194A
- Rated Current L value drop10%typ.at lbc against its initial value
- Temperature rise 40°C Max Reference ambient temperature
- Solderability: 75% of the lead wire shall be covered
- Soldering Methods: Wave,Reflow
- Operating Temperature:-25°C to +85°C
- Storage Temperature:-55°C to +125°C
- Terminal bending strength:24.5N Min
- Moisture resistance: $\Delta L/L \leq \pm 10\%$ $\Delta Q/Q \leq \pm 25\%$

Note: All specifications subject to change without notice.

Part Number	L (μH) @1KHz	DCR (ΩMax)	IDC (A Max)	Dim(Inches/mm) C Approx.	Dim(Inches/mm) ΦD Nom.
SH-IRD03-1R0M	1.0	0.003	21	0.80/20.32	0.081/2.05
SH-IRD03-1R2M	1.2	0.003	21	0.80/20.32	0.081/2.05
SH-IRD03-1R5M	1.5	0.003	21	0.80/20.32	0.081/2.05
SH-IRD03-1R8M	1.8	0.003	21	0.80/20.32	0.081/2.05
SH-IRD03-2R2M	2.2	0.003	21	0.80/20.32	0.081/2.05
SH-IRD03-2R7M	2.7	0.003	21	0.80/20.32	0.081/2.05
SH-IRD03-3R3M	3.3	0.003	21	0.80/20.32	0.081/2.05
SH-IRD03-3R9M	3.9	0.003	21	0.80/20.32	0.081/2.05
SH-IRD03-4R7M	4.7	0.003	21	0.80/20.32	0.081/2.05
SH-IRD03-5R6M	5.6	0.003	21	0.82/20.82	0.081/2.05
SH-IRD03-6R8M	6.8	0.004	21	0.82/20.82	0.081/2.05
SH-IRD03-8R2M	8.2	0.004	21	0.82/20.82	0.081/2.05
SH-IRD03-100K	10	0.006	17	0.82/20.82	0.081/2.05
SH-IRD03-120K	12	0.008	13.5	0.80/20.32	0.072/1.82
SH-IRD03-150K	15	0.009	13.5	0.80/20.32	0.072/1.82
SH-IRD03-180K	18	0.010	13.5	0.80/20.32	0.072/1.82
SH-IRD03-220K	22	0.011	13.5	0.79/20.06	0.064/1.62
SH-IRD03-270K	27	0.012	13.5	0.79/20.06	0.064/1.62
SH-IRD03-330K	33	0.017	13.5	0.79/20.06	0.064/1.62
SH-IRD03-390K	39	0.022	11.4	0.79/20.06	0.057/1.44
SH-IRD03-470K	47	0.024	9.0	0.79/20.06	0.057/1.44
SH-IRD03-560K	56	0.026	9.0	0.79/20.06	0.057/1.44
SH-IRD03-680K	68	0.029	9.0	0.79/20.06	0.057/1.44
SH-IRD03-820K	82	0.032	9.0	0.79/20.06	0.051/1.37
SH-IRD03-101K	100	0.034	9.0	0.79/20.06	0.051/1.37
SH-IRD03-121K	120	0.046	7.2	0.79/20.06	0.051/1.37
SH-IRD03-151K	150	0.064	5.5	0.77/19.56	0.045/1.14
SH-IRD03-181K	180	0.072	5.5	0.77/19.56	0.045/1.14
SH-IRD03-221K	220	0.080	5.5	0.77/19.56	0.040/1.01
SH-IRD03-271K	270	0.110	4.5	0.77/19.56	0.040/1.01
SH-IRD03-331K	330	0.122	4.5	0.77/19.56	0.040/1.01
SH-IRD03-391K	390	0.169	4.0	0.77/19.56	0.036/0.91
SH-IRD03-471K	470	0.187	4.0	0.77/19.56	0.036/0.91
SH-IRD03-561K	560	0.205	4.0	0.77/19.56	0.032/0.81
SH-IRD03-681K	680	0.256	2.8	0.77/19.56	0.032/0.81
SH-IRD03-821K	820	0.288	2.8	0.77/19.56	0.032/0.81
SH-IRD03-102K	1000	0.426	2.0	0.75/19.05	0.029/0.73
SH-IRD03-122K	1200	0.426	2.0	0.75/19.05	0.029/0.73
SH-IRD03-152K	1500	0.518	2.0	0.75/19.05	0.025/0.64
SH-IRD03-182K	1800	0.705	1.6	0.75/19.05	0.025/0.64
SH-IRD03-222K	2200	1.02	1.3	0.75/19.05	0.025/0.64
SH-IRD03-272K	2700	1.14	1.3	0.75/19.05	0.023/0.58
SH-IRD03-332K	3300	1.27	1.3	0.75/19.05	0.020/0.51
SH-IRD03-392K	3900	1.67	1.0	0.75/19.05	0.020/0.51
SH-IRD03-472K	4700	1.86	1.0	0.75/19.05	0.020/0.51

Note: 1. K=±10%,M=±20%,N=±30%