

SH-IRD 07A SERIES RADIAL LEADED POWER LINE CHOKES

TECHNICAL INFORMATION:

The AIRD-05,06,07,08,04A,06A,08A Series of Power Line Choke is available in 367 standard values covering a wide range of inductance and current. The use of high saturation flux density material make these coils ideal for use in switching regulated power supply applications and wherever high current choke values in a small physical size are needed.

- Inductance Testing: HP4284A, HP4285A or equivalent
 - RDC: QuadTech 1880 Milliohm meter
 - Q: HP4342A
 - SRF-HP4191A or HP4194A
 - Rated Current L value drop 10% typ. at I_{DC} against its initial value
 - Temperature rise 40°C Max Reference ambient temperature
 - Solderability: 75% of the lead wire shall be covered
 - Soldering Methods: Wave, Reflow
 - Operating Temperature: -25°C to +85°C
 - Storage Temperature: -55°C to +125°C
 - Terminal bending strength: 24.5N Min
 - Moisture resistance: $\Delta L/L \leq \pm 10\%$ $\Delta Q/Q \leq \pm 25\%$
- Note: All specifications subject to change without notice.



FEATURES:

- High Saturation Material
- Polyolefin Shrink Tubing
- Low DC Resistance
- High Reliability Low cost
- Packaging: Tape & Reel is Standard Bulk packaging available for smaller quantities
- Tolerance: 10% is standard, tighter tolerances available.
- Switching Regulators
- RFI Suppression Filters
- SCR and TRIAC Controls
- Automotive Systems



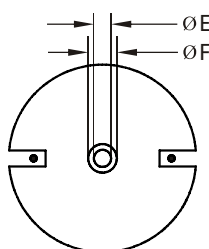
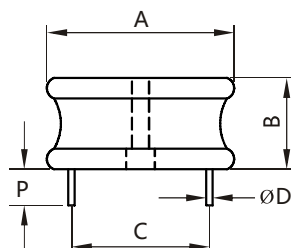
Additional information:

We reserve the right to make technical changes or modify the contents of this document without prior notice.

SHARE Ltd. Does not accept any responsibility what so ever for potential errors or possible lack of information in this document.

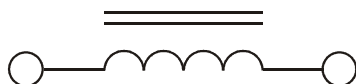
We can offer that even custom-made transformers will be covered by approvals from UL, CSA, KEMA, etc., but we will be happy to assist you in implementing them. New approvals may be required.

STANDARD SPECIFICATIONS:



DIMENSIONS: inches/mm

A	B	P(min)	E	F
2.40/60.96	0.74/18.80	0.50/12.70	0.25/6.35	0.425/10.795



Part Number	L (µH) @1KHz	DCR (ΩMax)	IDC (A Max)	Dim C (Inches/mm) Approx.	Dim D (Inches/mm) Nom.
SH-IRD07A-1R0M	1.0	0.0018	44.0	1.52/38.61	0.120/3.048
SH-IRD07A-2R2M	2.2	0.0024	40.0	1.52/38.61	0.120/3.048
SH-IRD07A-4R7M	4.7	0.0030	36.0	1.60/40.64	0.109/2.769
SH-IRD07A-8R2M	8.2	0.0042	32.0	1.29/32.77	0.109/2.769
SH-IRD07A-120K	12.0	0.0053	30.0	1.64/41.66	0.109/2.769
SH-IRD07A-150K	15.0	0.0060	28.0	1.69/42.93	0.094/2.388
SH-IRD07A-180K	18.0	0.0067	27.0	1.77/44.96	0.094/2.388
SH-IRD07A-220K	22.0	0.0076	26.0	1.77/44.96	0.094/2.388
SH-IRD07A-270K	27.0	0.0085	24.0	1.77/44.96	0.094/2.388
SH-IRD07A-330K	33.0	0.0094	23.0	1.86/47.24	0.094/2.388
SH-IRD07A-390K	39.0	0.0130	20.0	1.86/47.24	0.084/2.134
SH-IRD07A-470K	47.0	0.0150	19.0	1.78/45.21	0.084/2.134
SH-IRD07A-560K	56.0	0.0160	18.0	1.88/47.75	0.084/2.134
SH-IRD07A-680K	68.0	0.0210	16.0	1.88/47.75	0.084/2.134
SH-IRD07A-820K	82.0	0.0240	14.0	1.82/46.23	0.084/2.134
SH-IRD07A-101K	100.0	0.0310	13.0	1.77/44.96	0.068/1.727
SH-IRD07A-121K	120.0	0.0350	12.0	1.87/47.50	0.068/1.727
SH-IRD07A-151K	150.0	0.0450	11.0	1.77/44.96	0.068/1.727
SH-IRD07A-181K	180.0	0.0550	9.5	1.83/46.48	0.054/1.372
SH-IRD07A-221K	220	0.076	8.0	1.75/44.45	0.054/1.372
SH-IRD07A-271K	270	0.084	8.0	1.80/45.72	0.054/1.372
SH-IRD07A-331K	330	0.093	7.5	1.80/45.72	0.048/1.219
SH-IRD07A-391K	390	0.127	6.5	1.80/45.72	0.048/1.219
SH-IRD07A-471K	470	0.138	6.0	1.80/45.72	0.048/1.219
SH-IRD07A-561K	560	0.192	5.0	1.80/45.75	0.043/1.092
SH-IRD07A-681K	680	0.210	5.0	1.76/44.70	0.043/1.092
SH-IRD07A-821K	820	0.287	4.0	1.69/42.93	0.039/0.991
SH-IRD07A-102K	1000	0.320	4.0	1.72/43.69	0.039/0.991
SH-IRD07A-122K	1200	0.349	3.8	1.76/44.70	0.039/0.991
SH-IRD07A-152K	1500	0.492	3.2	1.72/43.69	0.039/0.991
SH-IRD07A-182K	1800	0.544	3.0	1.75/44.45	0.031/0.787
SH-IRD07A-222K	2200	0.691	2.3	1.71/43.42	0.031/0.787
SH-IRD07A-272K	2700	0.764	2.2	1.77/44.96	0.031/0.787
SH-IRD07A-332K	3300	1.027	1.98	1.71/43.43	0.028/0.711
SH-IRD07A-392K	3900	1.113	1.90	1.70/43.18	0.028/0.711
SH-IRD07A-472K	4700	1.565	1.65	1.72/43.69	0.025/0.635
SH-IRD07A-562K	5600	1.700	1.58	1.72/43.69	0.025/0.635
SH-IRD07A-682K	6800	1.854	1.50	1.46/37.08	0.025/0.635

K=±10%, M=±20%